



SHABBAT CELEBRATIONS

SECURITY PROVIDED AT ALL IN PERSON SHABBAT SERVICES - FRIDAY SERVICES ALSO AVAILABLE ON ZOOM



Saturday - February 1, 2025

Shabbat Morning Service - 10:00 a.m. - Baby Naming of Hannah Amelia Venegas

Led by Cantor Bern-Vogel -

Parashat Bo - פרשת בא - Exodus 10:1-13:16

Haftarah - II Samuel 7:18-29



Friday - February 7, 2025 - 6:30 p.m. - Shabbat Shirah

Led by Cantor Bern-Vogel with the Congregation Emanu El Choir

Oneg hosted by Ilene and David Mino in memory of Ilene's parents, Janice Carol Fingerut and Gerald Fingerut

Saturday - February 8, 2025

Torah Study - 9:15 a.m.

Shabbat Morning Service - 10:00 a.m.

Led by Cantor Bern-Vogel

Parashat Beshalach - פרשת בשלח - Exodus 13:17-17:16

Haftarah - Joshua 3:9-17, 4:19-24



Friday - February 14, 2025 - 6:30 p.m.

Led by Michele and Paul Zipperstein

Oneg hosted by Roberta and Phil Gold in honor of Valentine's Day

Saturday - February 15, 2025

Parashat Yitro - פרשת יתרו - Exodus 18:1-20:23

Haftarah - Ezekiel 16:4-14



Friday - February 21, 2025 - 6:30 p.m. - Reproductive Health Rights Shabbat -

Guest Speaker Kristin Booth

Led by Cantor Bern-Vogel

Oneg Shabbat hosted by Sisterhood in appreciation of Judy Filsinger and Robert O'Rourke

Saturday - February 22, 2025

Parashat Mishpatim - פרשת משפטים - Exodus 21:1-24:18

Haftarah - Joshua 24:16-28



Friday - February 28, 2025 - 6:30 pm

Led by Michele and Paul Zipperstein

Oneg Shabbat hosted by Julie and Mark Strain in honor of Julie's mother, Francine Wixen's birthday

Saturday - March 1, 2025

Parashat Terumah - פרשת תרומה - Exodus 25:1-27:19

Haftarah - II Kings 12:1-17

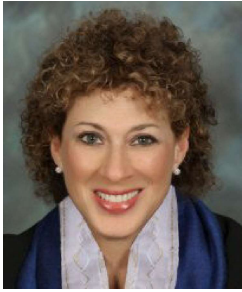


*New Member Welcome Shabbat
and Luncheon*

Saturday, March 1, 2025 - 10:00 a.m.

Join us for an abbreviated Shabbat morning service followed by a luncheon sponsored by our Sisterhood welcoming our new members of Congregation Emanu El.

Cantorial Comments



SHABBAT SHIRAH & JEWISH EARTH DAY!!

Shabbat in Song – beautiful music enhanced by our CEE Choir

And....

Tu B'Shvat Seder at 10 a.m. Sunday, February 9, 2025

February abounds in Music & Celebration. These days, we need all the inspiration and positivity we can get. What better holiday to come together as a community than the Birthday of the Trees – TU B'SHVAT – celebrating the first fruits of the trees. Tu B'shvat [the 15th of Sh'vat] is on Thursday, February 13th this year, but we will celebrate together on Sunday, February 9th. We will also visit the Israeli garden that is beginning to sprout with the beautiful bulbs sent by our Israeli family, Meytal, Regev, Bar and Aviv Gamliel and dedicate this section of the garden in their honor! This holiday is an opportunity to reconnect with the environment, a reminder of how precious our Earth is and how we must do our small part to take care of it. I know most of us are familiar with the following story, but it bears repeating as often as possible, especially after the devastating L.A. fires last month. We will be rebuilding and replanting for years to come...

In the Talmud, the story about planting for one's children tells of a man named Honi who sees another man planting a carob tree and asks how long it will take to bear fruit. The man replies "seventy years". Honi questions if he is sure he will live that long, to which the man responds that he is planting for his children, just as his ancestors planted for him, highlighting the idea of providing for future generations through thoughtful actions like planting trees.

And right after the celebration of the Trees...

Beginning at 11 a.m. on Sunday, February 9, 2025

Plan to stay for the 'END OF LIFE' Session with **Esther Wong**, for Part I of our **Adult Ed Series**

Esther will be there to answer all the questions you have regarding getting your affairs in order, concerns about Elder Care, Trusts, etc.etc. Ms. Wong is highly recommended by our own Paul Shimoff!!

Please join us in Celebration, Learning and Song!

Cantor Jennifer Bern-Vogel

ANNOUNCING Adult Ed - 2025

END OF LIFE SERIES or 'Where there's Will....there's a Way.'

February 9th, 11:00 a.m.-12:30 [following Tu B'shvat Seder] - Elder and Estate Lawyer, Esther Wong, will discuss affordable Wills and Trusts.

March 9th, 10:30 a.m.-12 noon - Past President and Cemetery Chair, Paul Zipperstein, will discuss and answer any and all questions related to cemetery planning and arrangements.

April 6th, 10:30 a.m.-12 noon - Cantor Jennifer Bern-Vogel and Congregation Emanu El member Nancy Sidhu will be co-leading the long-awaited Death Cafe. At a Death Cafe people drink tea, eat cake and discuss death, with the aim of increasing awareness of death without any objectives, themes or agenda.

Save
the
Date

**March 1st, 10:00 - Rescheduled New
Member Welcome Shabbat**

March 14th

**OVER THE
RAINBOW**

Shabbat Purim Celebration

Presidential Perspectives



I am excited to share with you a few important updates that reflect both our continued growth and the strength of our community, especially in these challenging times.

Security Fence Construction Has Begun

As you know, our temple campus has always been a place where we come together in worship, learning, and fellowship. To ensure the safety and security of all who gather here, we are pleased to announce that construction on our long-anticipated security fence has begun. This project has been made possible by a generous grant from the State of California, and we are deeply grateful for this support. This addition will provide a more secure environment for our congregation, allowing us to continue our work in a safe and welcoming space for all.

Rabbi Search Update

We are also pleased to inform you that we are preparing to submit our application to the Central Conference of American Rabbis (CCAR) as part of our ongoing search for a permanent Rabbi. This is an exciting next step in our congregational journey, and we remain committed to finding a spiritual leader who will help guide us, inspire us, and continue to nurture our Congregation Emanu El family. We offer immense gratitude to Co-Vice Presidents, Amanda Ramirez and Scott Wilkie for leading our rabbinic search.

Community Resilience in Troubling Times

Recent fires to the West serve as a stark reminder of how quickly our lives can change. In moments of crisis, we are reminded of the importance of staying connected as a community. The trials we face, whether personal or communal, underscore the profound need to lean on one another for support, compassion, and strength. Our community is built on shared values and the love we have for one another. In times of uncertainty, we must remember that we are never alone; together, we find the resilience to weather any storm.

We are stronger when we come together in prayer, action, and care. Let us continue to be a source of light for each other, and a beacon of hope to our community in times of darkness.

Thank You for Your Continued Support

As always, we are grateful for your unwavering support and involvement in the life of our congregation. Whether through your contributions, your volunteer work, or simply by being present, each of you plays a vital role in making this community what it is. We are truly blessed to walk this path together.

Warmly,

Greg Weissman

Treasurer's Report



Happy February! A short month with lots happening at Congregation Emanu El. We have a special Shabbat Shirah on February 7th. On Sunday, February 9th we have two events; first a Tu B'Shvat seder at 10:00 a.m.; this is open to everyone and provides a great time to learn

about Tu B'Shvat and enjoy the fruits of the trees! After the seder we have the first of our Adult Ed series speaker, Esther Wong who will discuss Wills and Trusts.

On Monday, February 17th, we will be hosting Sisterhood's annual Mah Jongg tournament with over 60 players from all over Southern California attending. It is THE most popular tournament because our Sisterhood ladies serve delicious food, gives a lot of great prizes and offers a lot of fun for all!

Again we have two events on Wednesday, February 19th. Our Seniors for Seniors Luncheon will be at 11:45 a.m. with a fun filled interactive trivia afternoon on February 19th. That evening we have the Rabbi Norman F. Feldheim Memorial Lecture featuring Rabbi Michael Berk, who grew up in our congregation.

There will be a very special, and timely, Shabbat Service on February 21st where we bring awareness to Reproductive Rights. Kristin Booth will be our guest speaker. Please plan on being there and learning about how you can support this important Jewish value.

You will find more detailed information about all our February events throughout this Bulletin.

Couple of "Save the Dates" for March: Saturday March 1st will be the rescheduled New Member Welcome Shabbat, and on March 14th our Over the Rainbow Shabbat Purim Celebration.

Tax Statements were sent out in January. If you did not receive your statement please let Judy or myself now.

Julie Strain

jbstrain1130@gmail.com

Board of Directors
Thursday,
February 20, 2025
7:00 pm
All are welcome

Sisterhood Meeting
Sunday, February 2, 2025
12:00 - 1:00 p.m.
All are welcome



Mental Health Awareness in Action

Room to Breathe

A rather dark green room, not like most rooms in art museums, and looking about we can hardly see many works of art. But this is in a museum, one in Manchester, England, and it has a purpose that differs from ones we're used to. The 3 paintings on the walls are not trying to wow us or overwhelm us with their profundity. Yet they are trying to do something, something Louise Thompson, a museum consultant, thinks we really need.

The name of the room says it well – “Room to Breathe.” Yes, this is where we can slow down, leave the constant visual and sound rush and crush of our lives and regain focus, as she says, be “single-minded” and aware. The Room to Breathe is designed to be part of a “mindful museum.” The museum even provides a guided meditation we can listen to. Thompson firmly believes such museums can improve our mental health.

“Museums are places where social connection thrives in lots of ways.....connection with our identity, through seeing objects ...which help us grow a sense of ourselves and of belonging.” So, sitting quietly before one of the 3 paintings and allowing ourselves to focus and linger on it, we find much more than we could ever grasp with a noisy cursory glance. We begin to inhabit where we are at this time, and we find that it and we are fuller and more expansive than we realized. As Thompson says, “The more I look, the more I see.” And “It’s about paying attention to what you can see in front of you....relaxing.” And with that kind of attention somehow our well-being and engagement rise, tension falls away, and somehow we feel inclined to chat with someone else nearby, and our muscles seem to soften.

Thompson would love us to create different kinds of rooms to breathe, maybe with historical objects in them. Mindfulness seems to enhance our experience with everything, calms us, helps

us think more clearly and see beauty where before we were too rushed.

The Manchester Art Gallery isn't the only place that has taken the Mindful Museum approach. There's a similar room at the Van Gogh Museum in Amsterdam. Where next?

But one thing is clear - slowing down, paying lingering attention, helps us with our own mental well-being.

Nancy Sidhu and Heidi Nimmo, Co-Chairs,
Mental Health Awareness In Action (MHAIA)

Sisterhood Speaks



“So, do you feel lucky?” by my hero, Clint Eastwood. Why did I start with this? Well, our first and only fundraiser for our Synagogue and Sisterhood is coming up February 17th.

We hope that you will help

us with our guests that day trying to win the most important tile game in China! You saw the movie, “Crazy Rich Asians”. The game looks amazing and complicated and Sisterhoods all over California love it too. Even at a conference that celebrates Sisterhood Women the first thing that you get to sign up for is a Mahjong Game!!! Now, I need to confess that I need to learn the rules of Mahjong before our big fundraiser. We are going to have a special class on Mahjong at our first meeting on February 2nd. If you would like to know how to play, come on down to our meeting from 12-1 pm and then a Mahjong class that follows. If you want to come, please tell Judy at the office that you are interested. Also, if anyone would like to donate items we can use for a gift raffle basket at the tournament, please contact Lori Fenster by February 7th.

Hope to see you soon, your Mahjong student,

Deborah Schwartz
Sisterhood President
dtschwartz54@yahoo.com

From Our School for Jewish Living

"Be strong as a lion when you wake up in the morning to serve your Creator."

February is a month for reflecting on all the love and goodness our children have in their lives. The past month presented too much sad news for our students to witness. Therefore, this month we will emphasize the roots of our Jewish values and virtues while defining how our acts can make the world a better place. Recognizing the good in people and situations may counter the feelings of sadness we feel watching the news or hearing of friends and family in despair. We hope that in thoughtful activities and discussions of hakarat hatov the cycle of "action" (seeing gratitude and appreciation) and response (acting upon one's responsibilities as a gifted/blessed person to help others) builds a foundation of self support for our students. We will also dig deeper in our first conscious moments when we wake up in the morning and how we thank God for the gift of life. Our Modeh-Ani.

Please join the Congregation and School for Jewish Living to celebrate a short Tu B'Shevat Seder on Sunday, Feb. 9th from 10:00 -11:00 a.m.

With Hope,
Miss Ilene & Miss Karyn

Hanukkah Celebrations

SJL Pokemon Hannukah Party

Light-Up the Night - Downtown Redlands



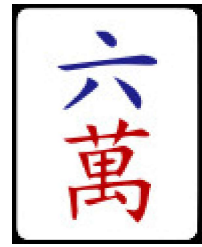
*Thank you to
Sisterhood and
their latke frying
crew for a
wonderful
Hanukkah Latke
Lunch*





JOIN US!

**Congregation Emanu El Sisterhood
Invites You to Play in Our 14th Annual
Mah Jongg Tournament!**



**Presidents Day - Monday, February 17, 2025
8:30 AM - 3:30 PM
\$50 per player**

**Congregation Emanu El
1495 Ford Street, Redlands - 909-307-0400**

**Questions: Call Julie Strain: 951-317-2003 or email jbstrain1130@gmail.com
Send Registration by Friday, February 7th**

Please return this portion with check for \$50.00 payable to: Sisterhood by **February 7th**
Mail to: Julie Strain, 6383 Emmerton Lane, Highland, CA 92346

Name: _____ Phone: _____

Address: _____

City: _____ Zip: _____

I will bring Mah Jongg set (include pushers & dice) _____

I will be East (remain at one table/keep score) _____

Thank you God for creating the fruit tree.



Please join us for a
Tu B'Shvat Seder
Sunday, February, 9th at 10:00 a.m.
with the children and families of SJL.

Just as at a Passover seder, symbolic foods are eaten in a special order in celebration of the important role trees play in our life. It's traditional to eat Israeli fruits, such as figs, dates, and carobs.

Engage and learn about Tu B'Shvat with a sampling of different types of fruits and nuts, juice, and challah.

We will review the blessing we say before eating fruit with the children, *borei p'ri ha'eitz*, while enjoying the morning together.



REPRODUCTIVE FREEDOM IS A JEWISH VALUE.

Reproductive Rights Shabbat
February 21, 2025
6:30 p.m.

Guest Speaker: Kristin Booth

Repro Shabbat is an annual Shabbat celebration dedicated to honoring the Jewish value of reproductive freedom that will be taking place February 21-22, 2025. It aligns with Parshat Mishpatim, which contains verses that are often referenced as the foundation of Judaism’s approach to reproductive health, rights, and justice.

Repro Shabbat is observed by communities around the world and is a powerful time for reflection, education, and activation towards a more just future for all.

Originally scheduled for January 15th this program had to be postponed due to adverse fire/weather conditions.

RESCHEDULED

SENIORS for SENIORS

For seniors of the greater San Bernardino-Redlands-Banning-Mountains and surrounding Jewish communities!!!

WEDNESDAY - FEBRUARY 26th - 11:45 AM
at Congregation Emanu El Shimoff Social Hall

LUNCH * LEARN * LAUGH

FEATURING THE WITTY, FUNNY, DELIGHTFUL TRIVIA QUEEN QUIZMASTER



Lorraine Chambers, the TRIVIA QUEEN QUIZMASTER will provide a fun-filled interactive program of general knowledge trivia. Everyone will be able to join in this exciting and humorous presentation.

\$15.00 per person

Reservations for the delicious catered Luncheon need to be made by Friday, February 21st by calling the temple(909)307-0400 or email: cee@emanuelsb.org

INVITE YOUR FRIENDS TO JOIN YOU!!! THEY WILL LOVE IT!!!!

**Congregation Emanu El
presents the
38th Annual Rabbi Norman F. Feldheim Memorial Lecture**

WEDNESDAY - FEBRUARY 19, 2025 - 7:30 pm

Congregation Emanu El - 1495 Ford Street - Redlands, CA

RABBI MICHAEL B. BERK

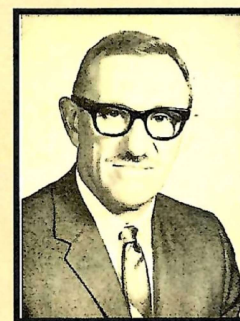
will speak on

***“CAN YOU MAKE A CONVINCING ARGUMENT
THAT A PIG IS KOSHER?
THE IMPORTANCE OF EMPATHY”***



Rabbi Michael Berk is the Senior Rabbi Emeritus of Congregation Beth Israel of San Diego. Rabbi Berk was born and raised in San Bernardino. He became a Bar Mitzvah (1965) and was confirmed (1968) at Congregation Emanu El. He is a graduate of Pacific High School. After receiving his B.A. degree in Political Science from UC Berkeley he studied for the rabbinate at the Hebrew Union College in Los Angeles and Cincinnati. He was ordained as a rabbi in 1978. He served congregations in San Jose, Santa Monica and Ventura and then served as the Regional Director of the Pacific Central West Council of the Union for Reform Judaism. From 2007-2019 he served as the Senior Rabbi of Congregation Beth Israel in San Diego. Upon his retirement in 2019 he was named Senior Rabbi Emeritus of that congregation. Upon their ordination in 1978 Rabbi Berk and his wife, Rabbi Aliza Berk, became the first rabbinic couple in Reform Judaism.

The Rabbi Norman F. Feldheim Memorial Lecture was established in 1985 at the time of his death by members of Congregation Emanu El as well as many friends in the wider community. Rabbi Feldheim served as rabbi of Congregation Emanu El in San Bernardino from 1937 to 1971 and as Rabbi Emeritus from 1971 until his death. He was actively involved in the greater Inland Empire community and known as a leader in interfaith activities.



OPEN TO THE PUBLIC - NO CHARGE

SISTERHOOD GIFT SHOP

DON'T MISS THIS SALE



During the month of February, all jewelry, Naked Bee, and Mahjong merchandise, valued at more than \$10, will be sold at 40% off our retail price.

**FOR ONE DAY ONLY, February 17th,
the day of our Mahjong Tournament,
ALL MAHJONG MERCHANDISE
will be 50% off the retail price.**



The Gift Shop will be open on Sundays during School for Jewish Living.

**Call the office (909-307-0400) to make an appointment with Gift Shop volunteers
if you need to shop at times other than during SJL.**

Your Sisterhood Gift Shop Team

CONGREGATION EMANU EL – FUNDRAISING WITH SCRIP PROGRAM **SCRIP IS PERFECT FOR HOLIDAY GIFTS!**

RaiseRight: Simply the right way to fundraise.

Raise funds by buying gift cards from RaiseRight to pay for your everyday shopping and spending year-round. Groceries, dining out, home improvement, and everything in between. It's the most convenient and effective way to fundraise because earning becomes part of your everyday life. Plus, gift cards are great for helping you to set and keep a weekly budget. It's never been easier to create opportunities for what matters most to you. No extra money spent. No extra time wasted.

How it works:

- Buy gift cards at full value from 750+ brands. Pick from eGift cards and physical gift cards.
- Earn up to 20% on every gift card you buy.
- Use gift cards at full value for your everyday purchases.
- Watch your fundraising account grow throughout the year, thanks to the brands that give back to support your community!



Turn everyday shopping
into fundraising dollars

 **RaiseRight.**
Formerly ShopWithScrip

Get started today!

Create a free fundraising account on the RaiseRight mobile app or at [RaiseRight.com](https://www.RaiseRight.com).

Congregation Emanu El - Our Enrollment code is [477F26554739](https://www.RaiseRight.com).

Have questions? Contact: Julie Strain at scrip@emanuelsb.org.

Happy Birthday!!! יום הולדת שמח

We rejoice with those whose birthdays occur in February and wish them a *Mazal Tov*:

6-February	Rita Cohn	22-February	Marjorie Brown
6-February	Lia Robinson	24-February	Cantor Jennifer Bern-Vogel
7-February	Daniel Villalobos	25-February	Gary Fenster
12-February	Cheryl Sukenik	26-February	Francine Wixen
14-February	Harriet Herman	27-February	Sheryl Austin-Fischer
14-February	Heftsibah Cohen	27-February	Adelyn Durazzo
16-February	Janet Rabinowitz	28-February	Deanna Levin

Happy Anniversary!!!

We extend a hearty *Mazal Tov* to the following whose wedding anniversaries occur in the month of February:

3-February	Lia & Mark Robinson	15-February	Donna & Gregory Spears
6-February	Emily & Craig Beasley	19-February	Marjorie & Neil Brown
9-February	Karyn & Stephen Lehmann		



We Gratefully Acknowledge

We gratefully acknowledge these contributions to our various temple funds:

TEMPLE FUND

In observance of the Yahrzeits of...

Guenther Rimbach by Michelle Ancil
Belle Kantor by Claudette Guy
Albert Weiss by Ellen Weiss
Norman Leviant by Ellen Weiss
Ethel Bitker by Ellen Weiss
Milton Powell by Joyce and Barry Eskin
Itzik Blumen by Alexandra and Ruben Blumen
Howard Grossman by Kathleen Grossman
Loretta Nave by Michelle Ancil
Hal Herman by Harriet Herman
Dr. Abram Hodes by Karen and Alan Hodes
Becky Hanover by Norman Hanover
Max Yaffe by Deborah and Daniel Schwartz
Sam Schwartz by Deborah and Daniel Schwartz
Yetta Schwartz by Deborah and Daniel Schwartz
Chassie Nelko by Deborah and Daniel Schwartz
Jean Moss by Annette and Lawrence Novack
Leon Arnold by Judith Smith and Michelle Ancil
Larry H. Schwartz by Pamela and Anthony Campbell

In Memory of...

Anne Freeman by Vickie and Steve Becker
Anne Freeman by Leona Aronoff-Sadacca
Anne Freeman by Ellen Weiss
Anne Freeman by Suan and Paul Shimoff

Anne Freeman by Roberta and Phil Gold

Sylvia Vogel by Ellen Weiss

Janice Carol Fingerut by Vickie and Steve Becker

Janice Carol Fingerut by Marlene and Larry Fingerut

In Honor of...

Susan and Paul Shimoff by Jeanne and Jeffrey Raynes

Rita and Rabbi Hillel Cohn by Lia and Mark Robinson

CHERRIE LUBEY SISTERHOOD FLOWER FUND

In observance of the Yahrzeit of...

Mildred Weiner by Barbara and Michael Smith

Leon Jay Darling by Nancy Darling

WILLIAM RUSSLER MEMORIAL ARCHIVE FUND

In observance of the Yahrzeits of...

Jacqueline Q. Russler by Gwynneth Q. Russler and Brian Tunney

Jacqueline Q. Russler by Libby Anne. Russler, Jonathan & Isaac Saiger

Jacqueline Q. Russler by Nicole Q. Russler

CANTOR'S DISCRETIONARY FUND

In the Recovery of ...

Cantor Jennifer Bern-Vogel by Joyce and Barry Eskin

Yahrzeits

The following Yahrzeits will be observed during the month of February: Those with a (✧) are inscribed on the Wall of Perpetual Memorial:

February 7-8	February 14-15	February 21-22	February 28-March 1
✧Rose Aronoff Morris Barnett ✧Jennie Berman Sam Charlick ✧Marcelle Cohen ✧Florence Connell ✧Michael Craely James Darling ✧Sidney Edward Eliot ✧Joseph Erlanger ✧Max Goodman ✧Howard Grossman ✧Harold Hanover ✧Mildred Harrison ✧Dr. Michael M. Klein ✧Fannie Lapides Anne Lebowitz ✧Bernice Lipsky ✧Fay Meyer ✧Rose K. Meyers ✧Katie Philipson ✧Elaine L. Robbins ✧Oscar Salow ✧Bess Shvemar ✧Rhoda Stahlberg ✧Samuel W. Steinsapir ✧Jack Tancos ✧Margaret Tancos ✧Gladys Flo Teeter ✧Jack Vaugall ✧Peter Virshup ✧David Walder	✧Reuben Berkman Evelyn Cohen Stanley Cohen ✧Ruth Donenfeld ✧Elaine Elford ✧Alta Ernstein ✧Samuel H. Finkle ✧Rhoda Fox ✧Natalie Gilbert ✧Stanley Helfman ✧Sylvia Irom ✧Arnold Kershner ✧Ralph Kress ✧Betty Kress ✧Minnie Kritzer ✧Barney A. Lampe ✧Leah Levene ✧S. Harry Litsky ✧Steven L. Lubey ✧Bernice McDonald ✧Elizabeth Metz ✧Samuel Neuburger ✧William H. Pass Kay Prestidge Mildred Scharf ✧Helmar Schlein ✧Marcus Shimoff ✧Samuel Joseph Snyder ✧Lucille Venne ✧Esther Zafman ✧Sarah Belle Zelle	✧Evelyn Berger ✧Marianne Bern ✧Leonard L. Berry Anne Darling ✧Rabbi Norman F. Feldheym ✧Bette M. Finkler ✧Sam Fredason Abraham Goldschlager Daniel Gorenberg ✧Lillian Gottlieb ✧Sol Goverman ✧Frances Harris ✧Jeannette Harris ✧Samuel Barnett Hearsh ✧Frank Heller ✧Annie Isenberg ✧Eva Jerome ✧Muriel Kattan ✧Dr. Hymen Klingman ✧Helene Koren ✧Rachel Kramer ✧Marcia Kravitz ✧Arthur Neumann ✧Lester Orland ✧Stanley Pro ✧Ruth Reissman ✧Jacob Samuels Lillian Schwartz ✧Dr. Jack Schwartz ✧David Sentob ✧Edith Tiner R.N.	✧Rose Abber ✧Frieda E. Aronoff ✧Dr. Joseph Berenbaum ✧Sydney Berman ✧Beth Bernstein ✧Tillie Birnkrant ✧Mary Black ✧Samuel M. Braman ✧Jewel S. Braman ✧Fred Cammack ✧Carl Cohn ✧Harry A. Corhan ✧Haskell Jacob Davidson ✧Anna Berger Feldheym ✧Lea Gilad ✧Rose Estelle Gottlieb George M. Groupp ✧Jack Harris ✧Rosa Hertz ✧Ruth Katzeff ✧Benjamin Katzman ✧Samuel Kaufman ✧Sylva Kord ✧Harry Langer Isadore Lebowitz ✧Marian J. Lippman ✧Marc Lubey ✧Louis N. Meyer ✧Zohra Dahan Ohana ✧Arnold J. Raynes ✧Jean Richmond ✧Harry Robin ✧Evelyn Rose ✧Sholom Hertz Schwartz ✧Frances Shapiro ✧Victor Simon ✧Enia Tabatchnik Gerson Wolk ✧Samuel L. Yaroslow

Cantor Jennifer Bern-Vogel
Hillel Cohn, Rabbi Emeritus

General Inquiries: 909-307-0400 / cee@emanuelsb.org

Cantor Jennifer Bern-Vogel: cantorjenbv@emanuelsb.org

School for Jewish Living: sjl@emanuelsb.org

Rabbi Emeritus Hillel Cohn: 909-771-6178 / rabbihcohn1@cs.com

Judy Filsinger, Temple Administrator: 909-307-0400 / templeadmin@emanuelsb.org

Our website: www.emanuelsb.org

Greg Weissman, President • Amanda Ramirez, Vice President • Scott Wilkie, Vice President • Julie Strain, CFO • Sidra Knox, Secretary
Immediate Past President, Paul Zipperstein
Deborah Schwartz, President, Sisterhood
Steven Becker, Jeffrey Rosenfeld, Members-at-Large

Board of Directors: Karyn Lehmann • Stacy Knox • Margie Orland •
Kathy Rosenfeld • Daniel Schwartz • Leah Zipperstein

Member, Union for Reform Judaism (URJ)

THE BULLETIN - CONGREGATION EMANU EL

Published monthly by Congregation Emanu El, 1495 Ford Street, Redlands CA 92373.

POSTMASTER: Send address changes to Congregation Emanu El, 1495 Ford Street, Redlands CA 92373