



SHABBAT CELEBRATIONS

SECURITY PROVIDED AT ALL IN PERSON SHABBAT SERVICES UNTIL FURTHER NOTICE



Friday - November 1, 2024 - 6:30 p.m. - ZOOM ONLY

Led by Cantor Bern-Vogel

Saturday - November 2, 2024

Parashat Noach - פרשת נח - Genesis 6:9-11:32

Haftarah - Isaiah 54:1-55:5



Friday - November 8, 2024 - 6:30 p.m.

Led by Paul and Michele Zipperstein

Oneg hosted by Kathy & Dan Trainor and Margy Spears in celebration of Kathy and Margy's birthdays

Saturday - November 9, 2024

Parashat Lech-Lecha - פרשת לך-לך - Genesis 12:1-17:27

Haftarah - Isaiah 40:27-41:16



Friday - November 15, 2024 - 6:30 pm - Veterans Shabbat

Led by Cantor Bern-Vogel

Margie Orland will speak on "The Life of a Military Spouse"

Oneg Shabbat hosted by Joya Eirew in memory of her husband, Allen and in honor of Veterans Day

Saturday - November 16, 2024

Shabbat Morning Service - 10:00 a.m. -

Led by Cantor Bern-Vogel

Parashat Vayera - פרשת ויבא - Genesis 18:1-22:24

Haftarah - II Kings 4:1-37



Friday - November 22, 2024 - 6:30 pm

Led by Cantor Bern-Vogel

Oneg Shabbat hosted by Sharon and Richard Granowitz in continued support of Sisterhood

Saturday - November 23, 2024

Torah Study - 9:15 a.m.

Shabbat Morning Service - 10:00 a.m.

Led by Cantor Bern-Vogel -

Parashat Chayei Sara - פרשת חיי שרה - Genesis 23:1-25:18

Haftarah - I Kings 1:1-31



Friday - November 29, 2024 - 6:30 p.m. - Dedication of the Shimoff Family Social Hall

Led by Cantor Bern-Vogel

Oneg Shabbat hosted by Michele and Paul Zipperstein in honor of Paul's and Leah's birthdays

Saturday - November 30, 2024

Parashat Toldot - פרשת תולדות - Genesis 25:19-28:9

Haftarah - Malachi 1:1-2:7

Cantorial Comments



Dear Friends:

Please allow me to share, in detail, why I will be out of the country for this first part of November. For almost 10 days this month, my family and I will be immersed in German-Jewish culture in the city of my mother's birth, Bielefeld, Germany, seeing old friends and cousins who will be making their way from Denmark. This trip is the culmination of all the trips that I've made to Europe over the past 17 months plus the seven years since my Mother's passing. I had been in discussion with family members in the U.S. and London, U.S. museums, curators and historians to make the decision as to where the Synagogue Key should be displayed. The key is the only remaining relic of my Mother's Synagogue destroyed on Kristallnacht in 1938 [The Night of Broken Glass].

The museum will be interviewing my brother and me for a video which will include recorded excerpts of my Mother speaking about her experiences. This has become a collaboration between the current Community Synagogue in Bielefeld and the History Museum where the key will be registered in perpetuity.

On November 8th, I will be co-leading Shabbat services with Cantor Yuval Paul Adam of the Bielefeld Synagogue. We will conclude with the poem "My Garden"* written by my Grandfather in April 1939, just before they left Germany; a composer [and good friend] in Germany has put it to music. At 5:30 in the afternoon of November 9th, people will convene at the spot where the old Synagogue was before its destruction and then proceed to the City Hall for a formal presentation, at which time I will present the key.

This is the English translation of what I will be delivering in German, along with the key:

In the late afternoon of November 9, 1938, my then 15 year old Mother, Marianne Katzenstein, was practicing the organ in her synagogue - music was her greatest passion. I like to imagine that she would have happily spent many more hours in that organ loft if she hadn't been called home to dinner. Dutifully, she locked the door behind her, put the key in her pocket and made her way home.

On the morning of November 10th, my mother was shaken out of her sleep with the cries of their maid, "Marianne, Marianne, the synagogue is burning, the synagogue is burning!" Built and commissioned in 1905 by Marianne's uncle, Moritz Katzenstein, who was also the President of the Bielefeld Jewish community, all that was left of the beautiful synagogue were flames and ash. Kristallnacht or "Night of Broken Glass" as it has been referred to in Germany for many years, now more properly called for what it truly was - a pogrom - changed the lives of German Jews and their descendants forever. Germany was no longer their homeland.

And what about that key? My Mother and her sister were able to leave Germany via the Kindertransport to London, and that key, still in my mother's pocket, set out on a journey that lasted nearly 90 years from England, briefly to Israel, and then America. As children, my brother and I were in awe of the big key in its special little velvet pouch. We grew to understand that it was connected to stories of a lost world in time; stories that were tainted with a mixture of sadness and longing. We knew the key was an important and precious piece of history that bridged the generations and forced us to connect with the past.

Years before she died, through a personal and professional connection, my mother had planned to donate the key to the Holocaust Museum in Washington D.C. But for many reasons [among them, the curator passed and then she did too] it did not happen in her lifetime and we were left to figure out where it should eventually have its final resting place. It was, after all, the bridge to my Mother's past and her beloved birthplace where she spent the first fifteen idyllic years of her life enjoying school, friends, family and playing in their beautiful garden. It was finally clear to us that it needed to go home. Just as, at one time, it opened the door to the synagogue, may it now symbolically open new doors; it was an important bridge of memory to the past, may it be a bridge of freedom to all future generations לדרך רדך.

On behalf of my entire family who have traveled from America, England and Denmark, we are honored to bring the key back to its original home to serve as a key of peace amongst peoples of all faiths and backgrounds - - to the new Community Synagogue of Bielefeld and the Bielefeld Museum of History.

*My Garden

Garden, my garden - the time has come -
Your colorful hue just leaves me numb...
We have to part, soon I'll be far -
And you'll belong to a different "tsar"

He will deprive you, of all your array
However your soul with me will stay,
My playtime toy, my childhood joy,
Known and familiar in every way.

Where the flowers softly say to me
We grew up together, you and we -
My children's joy when eventually
A new life blossomed up for me.

The end is in sight --the time has gone by
No one can love you more than I
The cherries are blossoming and I must flee
The ripened fruit I'll never see...

Text by Willy M. Katzenstein, April 1939
Translated by Marianne A. Bern, October 2013



Cantor Jennifer Bern-Vogel

Presidential Perspectives



As we conclude the sacred observances of Rosh Hashanah and Yom Kippur, allow me to extend my deepest gratitude to each of you as members of our congregation. Your support and participation during these High Holy Days have been truly inspiring, and I thank you.

Through the beauty of our services, led by Rabbi Birnham and Cantor Bern-Vogel, the music from our choir, along with the shared moments of reflection, all created a truly meaningful experience for us to share as a Temple family. Whether through an Aliyah, an ark opening, or simply attending, each of you contributed to these Days of Awe by creating a warm and welcoming community which has come to define Congregation Emanu El.

Your generosity too reminds me of your commitment to our Synagogue as our Kol Nidre Pledge appeal closes in on twenty-thousand dollars.

These days of renewal and introspection remind us of the strength we draw from one another. Thank you for being part of this journey as we seek growth, forgiveness, and connection in the year 5785 ahead.

Wishing you all a year of peace, good health, and joy.

L'shanah Tovah,

Greg Weissman

Treasurer's Report



November is the month of gratitude and thanksgiving. There are several events that focus on giving thanks and appreciation for our blessings. There will be the Redlands Area Interfaith Thanksgiving Celebration on Sunday, November 17th hosted by our Congregation! The last time we hosted this event was 10 years ago.

We are once again sponsoring a turkey drive to provide turkeys to families in need. Please contact the temple office to make a donation.

I am grateful for our congregation and our members; I am proud to volunteer and be a part of this synagogue. I am blessed with a wonderful family that brings me love and joy.

I wish everyone a very happy Thanksgiving.

Julie Strain

jbstrain1130@gmail.com

Sisterhood Speaks



Wow! What an amazing High Holiday event! I remember when my Mom used to go to the Shul in her area for weddings, Bat and Bar Mitzvahs, and Jewish Holidays. She would come home and say, "The event was

wonderful because of the FOOD!" Yes, that is correct.

Our family used to judge every event in the Shul by giving a thumbs up or thumbs down on the buffet of food. In Winnipeg, where I am from, the best holiday you could have in your life was a buffet breakfast at the nearest IHOP!

So, how did we do with our High Holy Day events! The grade came in with "Excellent". When we asked for bakers to make honey cake, chopped liver, cookies and everything else we needed for the Oneg, the Luncheon, and Break the Fast, our chefs came through. I want to acknowledge the following amazing women, Ilene Mino, Dr. Shayne Poulin, Gillian Block, Karyn Lehmann, Peytra Becker-Kurily, Lisa Lefton-Wilkie, Roberta Gold, Michele Zipperstein, Stacy Knox and Margie Orland. When you call in the troops like this group, you will not be disappointed.

Also, I would like to mention the Kitchen Staff of Lorraine Freeman, Blanca Freeman, Cassie Anastasia, Maria Vallejo and our very own Kathy Trainor, who displayed the food in such a wonderful way that everyone could fill their plates and enjoy each others company.

So, why did I mention this today? It is real simple. We will need everyone to take a breath right now and then get ready for our Chanukah Latke Lunch on December 29th. Put this on your calendar and get ready to pull out your potatoes and frying pans and produce the best latke you can make. I have already opened up five Jewish Cookbooks to find the one and only best tasting latke I can make. Please give Kathy Trainor a call when you are up for the challenge. See you soon.

Love,

Deborah Schwartz

Sisterhood President

From Our School for Jewish Living

Shanah Tovah! October was a strong start to our new year. We made cut-paper art of our Magen David, Ziz birds, and Etrog to hang in the sukkah. We blew away our regrets with bubbles, and practiced dancing for Simchat Torah. We sat in the sanctuary and learned about different Siddurim, as well as learning new tefillah. This year we are adding both songs and tefillah to our student books. Every week the students interacted with Jewish literature: asking questions, relating to their lives, making judgements, and sharing ideas. Next month is just as packed! Look forward to more hakarat hatov (seeing the good), practicing showing thanks, and doing for others. Special thanks to Mrs. Zipperstein for sharing her love of music, to our parents for decorating the Sukkah with our art, to Cantor Jen, and all those who continue to support our School for Jewish Living. Please share the joy of our school with others.

With Love,
Miss Ilene & Miss Karyn





Mental Health Awareness in Action

Would it surprise anyone to learn that mothers and fathers have stress filled lives? Probably not, but it might surprise us that the U.S. Surgeon General thinks it is serious enough to declare parental stress a public health concern. This past summer, Dr. Vivek Murthy did just that. Why?

The parents of young children are probably laughing now, knowing perfectly well how hard it is to manage taking care of young ones, doing our pay jobs, finding childcare and the money to pay for it, worrying about gun violence at schools, and getting enough rest and sleep. According to studies, almost half of parents feel overwhelmed by stress and exhaustion *on most days*.

And there are more subtle things we may not talk about but often increase stress. Like loneliness. How's that? Many of us are single parents and we don't necessarily have relatives near us who pitch in to help out and to whom we talk. We need both. Someone who loves us and listens, someone who helps.

We've probably all heard the sentence: "It takes a village." Yes, to raise children more happily, we need others around us to support us in different ways and we probably don't need some of what social media gives us – what Dr. Murthy calls "a culture of comparison," where we come to feel inadequate compared to all those super moms out there somewhere. And load on top of that, we know that children thrive best when their parents are *not* anxious, lonely and depressed. We should be calm and happy. Good luck with that. Double stress.

Dr. Murthy calls parenting "a team sport." Who's the 'team?' All of us, the whole society. We need to shift our values so that we recognize that parenting is vitally important and must be supported by us, individually – what could we personally do to help? And by us through our government support for paid leave and affordable childcare, for example. Most societies like us have governments who provide that using tax revenues. They know a vibrant democratic society must help raise the next generation, and the next one. It shouldn't be a lonely, individual endeavor, causing anxiety and depression.

Let's all be part of the 'team.' Together we can. And let's give thanks for not only a beautiful Thanksgiving table this year, but also for all of us together, helping each other flourish.

Nancy Sidhu and Heidi Nimmo, Co-Chairs, Mental Health Awareness In Action (MHAIA)

Board of Directors

Thursday,
November 21, 2024
7:00 pm
All are welcome

Sisterhood Meeting

Sunday, November 3, 2024
Following the Voices of October 7th Speaker
12:00 p.m. - with a light lunch
All are welcome

In Memoriam

זכרונו לברכה

We note with sorrow the recent death of our member

Richard Nachman
1949 - 2024

He was predeceased by his wife,
Gail Cohen Nachman

May the memories of the righteous
be for a blessing

Shabbat Service

November 15th

6:30 p.m.



Celebrating our Veterans

**Margie Orland will speak on
"The Life of a Military Spouse"**

SUNDAY, NOVEMBER 3rd

10:00 a.m.

“VOICES OF OCTOBER 7TH”

**PLEASE JOIN US TO BEAR WITNESS TO THE TESTIMONY OF
NOVA SURVIVOR, SAGI GABAY**



Sagi Gabay is a 28-year-old Nova survivor from Rishon LeTsiyon, born to Moroccan Israeli parents. He has a B.A. in Political Science and Communication and a M.A. in Diplomacy and Strategic Marketing. He currently works as the spokesperson for a member of the security cabinet, Minister Gideon Saar. In the IDF he was a news editor and sound technician for the army station of one of the leading news companies in Israel. At the university, he was the spokesperson of the student union, was responsible for bringing the Birthright Program to his school for the first time, and participated in a leadership and public diplomacy fellowship through StandWithUs. He was ready to come work in the US through the Jewish agency at the University of Connecticut, but ultimately had to stay in Israel for a family emergency. Now he's been working in the Knesset for three years. In his free time Sagi loves tennis, traveling, and parties. When terrorists attacked Sagi and his friends at the Nova music festival, they ran through a narrow escape and ran for about 12 miles until hiding in Patish.

SAVE THESE DECEMBER DATES

Decorative border with icons: menorah, gift, Star of David, dove, Star of David, gift, menorah, dove.

December 26th
Light-Up the Night at
Ed Hales Park
Downtown Redlands

December 29th
HANUKKAH
LATKE LUNCH
Sponsored by Sisterhood



More details coming in the December bulletin

Decorative border with icons: menorah, gift, Star of David, dove, Star of David, gift, menorah, dove.

SENIORS for SENIORS

For seniors of the greater San Bernardino - Redlands - Highland - Banning - Mountains and surrounding communities

Join us for a Delicious Lunch & a Program that you will never forget -
and a time to be with old friends and meet some new friends!!!

WEDNESDAY - NOVEMBER 20th
11:45 am
Congregation Emanu El Social Hall

A MUSICAL PROGRAM THAT WILL AMAZE YOU
PRESENTED BY A WORLD-RENOWNED SONG WRITER AND PERFORMER



MOD ROBERT



A member of the Listening Room Network's roster of artists, Singer-Songwriter Mod Robert crafts richly detailed songs full of insight and poignancy. His melodic and chordal style is infused with jazz, folk and rock elements. He performs with guitar and piano and also includes violin improvisation. Mod Robert has produced five albums. One of his songs was chosen to be a finalist in the 2019 International Song Competition. He has performed around the world and delighted his audiences.



Reservations for the delicious catered Luncheon must be made by Friday, November 15th
\$15.00 per person
by calling Temple (909)307-0400 or email: cee@emanuelsb.org

Invite your friends to join you!!!

**Special Friday Night Shabbat Service
Dedication of the Shimoff Family Social Hall
Friday, November 29, 2024 at 6:30 p.m.**

Join us for a special Shabbat service as we honor the legacy and vast contributions of Susan and Paul Shimoff to Congregation Emanu El.

On this night we will dedicate the Shimoff Family Social Hall; a most fitting tribute to the Shimoff's steadfast commitment to our beloved Temple.

**All are invited to the
Redlands Area Interfaith Council
15th Annual Thanksgiving Celebration
"A Menu for ThanksLiving"**

**An inspiring service bringing together the diverse faith
community of Redlands and adjoining communities
to prepare for Thanksgiving.**

**Sunday
November 17, 2024 - 4:00 p.m.**

**Hosted by
Congregation Emanu El
1495 Ford Street, Redlands**

**Featuring speakers Rabbi Emeritus Hillel Cohn,
Congregation Emanu El and
Kawa Shwaish, Islamic Community Center of Redlands**

**Clergy and choir members of various religious
institutions will be participating.**

Followed by a reception featuring pies and baked goods.

SISTERHOOD GIFT SHOP

The chill is coming up now so... it's time to FALL INTO YOUR SISTERHOOD GIFT SHOP!

You can make your own individual selection of Tea Bags from our Tea Book to warm up the darker nights that are coming. They have creative names and fun artwork with famous folks throughout history on them. Or you can get a pre-curated cube with specific themes and flavors.

Want some beautiful decorations for Fall and Thanksgiving?

Hand blown glass pumpkins; platters and dishes handcrafted in Israel; hand-dipped/crafted Shabbat and Havdalah CANDLES from TZFAT in the Galilee of Israel. They are all here for you.



Put the Gift Shop Hanukkah Sale on your calendars right now!
The Sale starts on Sunday Dec. 8th and continues through 15th during SJL.
The sale runs until the week before Hanukkah begins, including the day of the scheduled Senior Luncheon.

May you state all the things you are thankful for this month. Don't forget to include our Congregational family, Temple grounds and the building that holds YOUR GIFT SHOP.

Call the office (909-307-0400) to make an appointment with Gift Shop volunteers if you need to shop at times other than during SJL.

Your Sisterhood Gift Shop Team

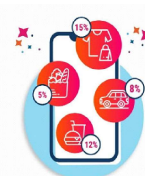
CONGREGATION EMANU EL – FUNDRAISING WITH SCRIP PROGRAM SCRIP IS PERFECT FOR HOLIDAY GIFTS!

RaiseRight: Simply the right way to fundraise.

Raise funds by buying gift cards from RaiseRight to pay for your everyday shopping and spending year-round. Groceries, dining out, home improvement, and everything in between. It's the most convenient and effective way to fundraise because earning becomes part of your everyday life. Plus, gift cards are great for helping you to set and keep a weekly budget. It's never been easier to create opportunities for what matters most to you. No extra money spent. No extra time wasted.

How it works:

- Buy gift cards at full value from 750+ brands. Pick from eGift cards and physical gift cards.
- Earn up to 20% on every gift card you buy.
- Use gift cards at full value for your everyday purchases.
- Watch your fundraising account grow throughout the year, thanks to the brands that give back to support your community!



Turn everyday shopping
into fundraising dollars

 **RaiseRight.**
Formerly ShopWithScrip

Get started today!

Create a free fundraising account on the RaiseRight mobile app or at RaiseRight.com.

Congregation Emanu El - Our Enrollment code is [477F26554739](https://www.raise-right.com/enrollment).

Have questions? Contact: Julie Strain at scrip@emanuelsb.org.

Happy Birthday!!!

יום הולדת שמח

We rejoice with those whose birthdays occur in November and wish them a *Mazal Tov*:

1-November	Paul Shimoff	16-November	Elliot Glasser
1-November	Stanley Weisser	19-November	Marylou Hanover
2-November	Sharon Lang	22-November	Leah Zipperstein
5-November	Calum Becker-Kurily (7 years old)	24-November	Cyril Kaicener
8-November	Margy Spears	24-November	Luisa Cohen (15 years old)
8-November	Kathy Trainor	26-November	Lynn Mathews
10-November	Josh Mozer	28-November	Mary Lynn Stough
11-November	Michael Martinez	29-November	Shelley Bodnar
14-November	Michelle Anctil	30-November	Julianne Strain
14-November	Fredric Rabinowitz		

Happy Anniversary!!!

We extend a hearty *Mazal Tov* to the following whose wedding anniversaries occur in the month of November:

26-November Vickie & Steve Becker
27-November DJ & Jeffrey Raynes

We Gratefully Acknowledge

We gratefully acknowledge these contributions to our various temple funds:

TEMPLE FUND

In observance of the Yahrzeits of...

Stanley Mishook by Anita Lampel

Rachel Goodstein by Carol Press Pristoop and Thelma Press

Anne Fisher by Norman Hanover

David Fisher by Norman Hanover

Irving Moss by Annette Moss

Cecilia Kustin by Gloria Snyder

Linda Prestidge by Shauna and Walt Van Horn

Herbert Lubell by Phyllis Newman

Jeffrey Kamzan by Phyllis Newman

Irene Lubelsky by Phyllis Newman

Bernard Domroy by Michelle Anctil

Max Rosen by Zeeda and Roy Nierman

Helen Mishook by Anita Lampel

In Memory of...

Dr. William Coleman by Monique Coleman

CHERRIE LUBEY SISTERHOOD FLOWER FUND

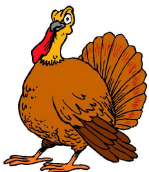
In observance of the Yahrzeits of...

Michael Weiss by Ellen Weiss

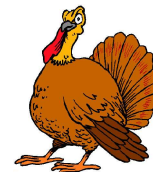
Maurice Soltz by Leslie and William Soltz

High Holy Days Bema Flowers by ...

Judy and Bud Charlick



Let's Talk Turkey!
It's Turkey Donation Time Again!
We Need Your Help



For many years, our Congregation has partnered with local non-profit agencies in providing turkey dinner for families in need during the holiday season.

This year we are trying to supply 72 turkeys (that's quadruple chai!).

Donations of \$25 per turkey can be made to meet this need and provide turkeys to families through our Annual Turkey Fund Drive.

**Donations are now being gratefully accepted in the Temple Office
or can be made on-line at www.emanuelsb.org - designated for turkey drive**

Yahrzeits

The following Yahrzeits will be observed during the month of November: Those with a (✧) are inscribed on the Wall of Perpetual Memorial:

November 1-2	November 8-9	November 15-16	November 22-23	November 29-30
Herman Arlein	✧Lina Becker	✧Yetta Abrams	✧Gabriel Brill	✧Sara Ansill
✧Nathan Frankel	✧Richard Becker	✧Edith Gimble Abramson	✧Burton Brin	✧William Becker
✧Arnold Frisch	✧Lena Bernstein	✧Joseph Allen	✧Judge Christy	✧Samuel Brill
✧Rachel Glovinsky	✧Maxwell Bernstein	✧Lore Blumenthal	Donenfeld	✧Mae Cohen
✧Max Goodman	✧Pauline Berzosky	✧Rosa Blumenthal	✧Israel Gold	✧Leon Jay Darling
✧Jeffrey Brian Kamzan	✧Beatrice Bettinger	✧Lillian Brill	✧Max Hanover	Zisle Degin
✧Rose Karen	✧Diane Doros	✧Solomon Buchband	✧Johanna Harris	✧Lily Burstin Drantch
✧Wallace J. Lebeck	✧SPC Jacob Fletcher	✧Benjamin Feit	✧Rebecca Helfman	✧Leonard E. Eckstein
Tobi Lefton	✧Rose Fremland	✧Samuel Feldstein	✧David Hoffman	Allen Eirew
✧Louis Lempert	✧Sophie Goldberg	✧Barney Finkleman	✧Kortney Johnson	✧Norman Ernstein
✧Louise S. Levine	✧Anna Harris	✧Stephen Joseph Ginsberg	✧Sam Joseph	Marie Fulton Miller
✧Harriet E. Levine	Terrlyn Holder	✧Rudolph Greenwood	✧Martha Kaplan	✧Rose Greenwood
✧Adeline Libman	Michael Hosmann	✧Solomon Helfman	Martin Lebowitz	✧Benjamin Grossman
✧Maurice Lichtenstein	Douglas Hosmann	✧AIC Keir Damon Johnson	✧Dorothy Levy	✧Elsie Hoelzl
✧Irene Lubelsky	✧Abraham Kavovit	✧Celia Joseph	✧Nathan Mishkin	Virginia Joyce
✧Joel Brian Mayfield	✧Morris Krieger	✧William Klemtner	Horace Nahm	✧Regina Kleinman
✧Lillian Rhein	✧Celia Kustin	✧Rena R. Knopf	Loretta Nave	✧Sprinza Korengold
✧Rebecca Rogers	✧Nettie Levin	✧Nat Levin	✧Max Rosen	✧Harry Kramer
✧Abram Rosen	✧Lillian Levine	Thomas McAfee	Sgt. David Roten Jr.	✧Lena Levenson
✧Max Rosen	✧Dora Lichtenstein	✧Lillian Meyer	✧Lise Rundberg	✧Ruth Mathews
Elmer Scharf	✧Lilyan Liss	✧Aaron Miller	✧Bertha Silverman	Bert Medoff
✧Joe Scher	✧Herbert Lubell	✧Jenny R. Rosenbaum	✧Harold F. Simon	David Nickel
✧Edward J. Seeman	✧Norma Maskin	✧Louis Rowelsky	✧Leona Libby Soltz	✧Abbot Robbins
✧Eleanor Smith	✧Celia Mishkin	✧Ruth Rowelsky	✧Sidney Vines	Kathleen Schaeppi
✧Julius Nathan Spears	✧Joseph L. Modes	✧Flora Sentob	Irvin Yaffe	Morris J Sheppard
✧Edith Sheila Suchow	✧Burt A. Orland	✧Herman Stelzer		✧Louis Stein
✧Anna Walt	✧Nat Pinsky	Shelley Breslaw Wynne		Joseph Tevelowitz
	Fredrick S Rosenfeld			
	✧Paul Rowelsky			
	Abraham Sheppard			
	✧Sue W. Simon			
	✧Max Uffer			
	✧Mark Allen Walder			

Cantor Jennifer Bern-Vogel
Hillel Cohn, Rabbi Emeritus

General Inquiries: 909-307-0400 / cee@emanuelsb.org

Cantor Jennifer Bern-Vogel: cantorjenbv@emanuelsb.org

School for Jewish Living: sjl@emanuelsb.org

Rabbi Emeritus Hillel Cohn: 909-771-6178 / rabbihcohn1@cs.com

Judy Filsinger, Temple Administrator: 909-307-0400 / templeadmin@emanuelsb.org

Our website: www.emanuelsb.org

Greg Weissman, President • Amanda Ramirez, Vice President • Scott Wilkie, Vice President • Julie Strain, CFO • Sidra Knox, Secretary
Immediate Past President, Paul Zipperstein
Deborah Schwartz, President, Sisterhood
Steven Becker, Jeffrey Rosenfeld, Members-at-Large

Board of Directors: Karyn Lehmann • Stacy Knox • Margie Orland •
Kathy Rosenfeld • Daniel Schwartz • Leah Zipperstein

Member, Union for Reform Judaism (URJ)

THE BULLETIN - CONGREGATION EMANU EL

Published monthly by Congregation Emanu El, 1495 Ford Street, Redlands CA 92373.

POSTMASTER: Send address changes to Congregation Emanu El, 1495 Ford Street, Redlands CA 92373