



Congregation  
Emanu El

# THE BULLETIN

1495 FORD STREET · REDLANDS · CALIFORNIA · 92373 · (909) 307-0400

AUGUST 2019

TAMMUZ - AV 5779

VOLUME XLVIII - NUMBER 10

## SHABBAT CELEBRATIONS

Please note adjustment to Saturday Shabbat schedule for August



**Friday - August 2, 2019 - 7:00 pm**

Led by Rabbi Reznick

Oneg Shabbat following the service hosted by Roberta & Phil Gold

**Saturday - August 3, 2019**

**NO TORAH STUDY**

**NO SHABBAT MORNING SERVICE**

Parashat Matot-Masei - פרשת מטות מסעי - Numbers 30:2-36:13

Haftarah - Jeremiah 1:1 - 2:3 - 28; 3:4



**Friday - August 9, 2019 - 6:00 pm - SHUL BY THE POOL & POTLUCK**

Home of Rhian Beutler & Robert Shipway

Led by Rabbi Reznick

Oneg Shabbat following the service and potluck hosted by Jeff Spears in honor of Heidi's birthday

**Saturday - August 10, 2019**

**NO TORAH STUDY**

**NO SHABBAT MORNING SERVICE**

Parashat Devarim - פרשת דברים - Deuteronomy 1:1 - 3:22

Haftarah - Isaiah 1:1 - 1:27



**Friday - August 16, 2019 - 7:00 pm**

Led by Rabbi Reznick

Oneg Shabbat following the service hosted by Susan Damron in honor of her mother's birthday

**Saturday - August 17, 2019**

**NO TORAH STUDY**

**NO SHABBAT MORNING SERVICE**

Parashat Vaetchanan - פרשת ואתחנן - Deuteronomy 3:23 - 7:11

Haftarah - Isaiah 40:1 - 40:26



**Friday - August 23, 2019 - 7:00 pm**

Led by Rabbi Reznick and Cantor Bern-Vogel

Oneg Shabbat following the service hosted by Barbara & Mike Smith in honor of Michelle and Nicole's birthday

**Saturday - August 24, 2019**

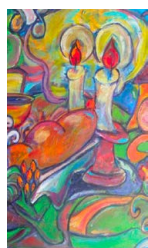
**Torah Study led by Rabbi Reznick - 9:15 to 9:45am**

**SHABBAT MORNING SERVICE AT 10:00 AM**

Led by Rabbi Reznick and Cantor Bern-Vogel

Parashat Eikev - פרשת עקב - Deuteronomy 7:12 - 11:25

Haftarah - Isaiah 49:14 - 51:3



**Friday - August 30, 2019 - 7:00 pm**

Led by Rabbi Reznick

Oneg Shabbat following the service hosted by Tim Plueger in honor of his sister's birthday

**Saturday - August 31, 2019**

**NO TORAH STUDY**

**NO SHABBAT MORNING SERVICE**

Parashat Re'eh - פרשת ראה - Deuteronomy 11:26 - 16:17

Haftarah - Isaiah 54:11 - 55:5

## Rabbinic Reflections



The high holidays are quickly upon us in just two months. The month of Elul is the month in the Jewish calendar that precedes Rosh Hashanah and Yom Kippur and begins September 1st. In the month of Elul, we are invited to get a head start on the introspective work we are asked to complete before the holidays themselves. There is something quite beautiful about having an entire month to prepare ourselves by asking the tough questions, where have I missed the mark and where do I need to make some repair in my relationships? In the Haftarah text, now until our High Holy Days we are reading texts of comfort, reminding us that God is with us as we begin our preparation. Our liturgy echoes this, calling to us to “return again, return again, return to the land of your soul.” When we are able to honestly assess our misdoings, and look at our own areas of growth, we can open ourselves to approach Rosh Hashanah and Yom Kippur with deeper connection and insight.

This year the cantor and I are offering a two series High Holiday spiritual preparation class. Come join us on Wednesday August 21st and August 28th from 6:30-8 pm as we write, sing, pray our way into the sacred work of introspection. The prayers in our new Machzor remind us that Elul is our time to create healing in relationships with other human beings. Tradition teaches our healing with the Divine is in process in our prayer services on the holidays themselves. This Elul join the cantor and myself in a deep exploration of both liturgy and practices that you can integrate into your spiritual journey. Psalm 27 which is read and recited during the Month of Elul says “Adonai is my light and my salvation, I shall not fear. Adonai is the strength of my life, I shall not fear.” Let us not be afraid to take an honest accounting of ourselves in order to grow closer to our best selves and closer to the Divine. Taking the time to prepare our souls for this important season can only enhance our spiritual growth and personal development.

Wishing you meaningful months of introspection,

*Rabbi Lindsey Reznick*

## Cantorial Comments



**Get in gear for High Holy Days — Themes musical & liturgical!**  
**Don't miss: Learner's Minyan – Shabbat Morning – August 24<sup>th</sup> -**  
**‘What do you know about the many different**  
**forms of the Kaddish prayer?’**

Although the High Holy Days are relatively ‘late’ this year according to our secular calendar, your Congregation Emanu El staff, clergy and choir are already in full swing with preparations. In addition to some of our veteran Torah chanters, we also have several ‘first-timers’ who have been learning the High Holy Day trope and their portions since May.

I believe we have the most chanters that we’ve had in some time! Very exciting, indeed!

We hope that most of you will have returned from travels near and far in time for Erev and Morning [Shacharit] Shabbat services the weekend of August 23<sup>rd</sup>. **On Friday night, August 23**, we will be re-introducing you to familiar musical themes [nusach] of the High Holy Days, giving you the opportunity to begin practicing the melodies, so that you can be an integral part of the singing during Rosh Hashanah and Yom Kippur!

**On Shabbat morning, August 24<sup>th</sup>**, don’t miss the chance to be part of the Learner’s Minyan; this concept combines not only Shabbat morning liturgy and Torah service, but we will also be learning about the different forms – melodies and text variations – of the Kaddish prayer.

We are approaching the new Hebrew month of *Elul* – a very special time in the Jewish calendar year, prior to Rosh Hashanah, when we have the opportunity to renew our souls, as well as mind and body on a daily basis. See Rabbi Reznick’s article about our ELUL SPIRITUAL PREP classes!!!

*The Lord is my light and my salvation—  
whom shall I fear?*

*The Lord is the stronghold of my life—  
of whom shall I be afraid?*

Psalm 27

*B’shalom,*

*Cantor Jennifer Bern-Vogel*

## Presidential Perspectives



### We try harder.

It was 1962 when the number two car rental brand rolled out one of the most effective slogans of all time. Avis had a clear message. They didn't say they were cheaper. They didn't say they were bigger. They didn't say they had faster cars. In fact, none of those things were true. But despite that, they wanted their customers to know that they cared more than the competition and that was the real difference.

There's a lot to learn there. In order to learn it, start by thinking about why you are a member of Congregation Emanu El. Is it because we have a beautiful building? (We do.) Is it because we offer Reform Judaism to the Inland Empire? (We do.) Is it because we have great, engaging, uplifting Friday night services? (We do.)

That's not why you're a member. You're reading this, and you're a member of our family, because someone along the way tried harder. Someone welcomed you with open arms. Someone cared about you and your family. Someone said with a sincere smile, "Come, be one of us. We care about you. You're important to us." You may have decided to walk in the door for the first time because you're a Reform Jew. You decided to stay because you became part of the Congregation Emanu El family.

It is time we tried harder to grow. When you see someone new, reach out to them. Learn what's important to them. Learn who they are and what brought them to us. Make a new friend. Let's face it —leaving the house is pretty hard today. It's easier to buy everything online and enjoy your Netflix and Hulu. It's easier to live other people's lives on Facebook. When you do leave home, you want to know that you're among friends.

So does everyone else. I dare each one of you to show up more, to care more, to be more welcoming. I dare you to make new friends and to bring new people to our community. I dare you to say, "we try harder."

Shalom,  
*Stuart Sweet*

## Sisterhood Speaks



As we prepare for the New Year, we should take time out to relax, reflect and energize. This past year we have seen change, growth and joy become the cornerstone of our community. This coming year will be no different.

We are excited to see the addition of a new Director of our school and wish Jillian the best in her new endeavors! We will miss you!

As Sisterhood gears up for the New Year, please keep your eyes on your mailbox for our membership packet, we are only as good as the sum of our parts (you) and can only be our best with all of us working together. There are many opportunities to help Sisterhood and joining is the simplest way! Please feel free to reach out if you have questions or suggestions. We can only become better if we show up and speak up! Sisterhood will be sponsoring a bagel schmooze on the first day of SJL Sunday, August 18<sup>th</sup> in conjunction with a gift shop sale! Please join us whether you have children in the school or not! We look forward to seeing you there!

If you would like to email me or rsvp for any Sisterhood event, we will now be using our own email [sisterhood@emanuelsb.org](mailto:sisterhood@emanuelsb.org) to try to help alleviate Judy's workload.

Our next Sisterhood Board meeting will be at the Temple on August 25<sup>th</sup> at 10 am. Please feel free to join us! We welcome and encourage you to join us!

B'Shalom,

*Karyn Lehmann*

*President, Sisterhood*

### Temple Board of Directors Meeting

August 15, 2019, 7:00 pm

Members of the congregation are always welcome.

---

### Sisterhood Board Meeting

Sunday, August 25, 2019, 10:00 a.m.

All Sisterhood Members are welcome

# Treasurer's Report



Dear CEE Congregants,  
Shalom!

Summer is almost over – at least for those who mark the end of the summer as the start of a new school year! I hope that you have all had the chance to relax and re-energize this summer!

If you have not received your dues renewal package, please contact Judy Filsinger at the Temple Office. Thank you to all those members who have renewed your dues for 2019/2020. It is never too late to let Judy know what you will be paying for this new fiscal year and how you would like to pay the membership dues. Remember, our operating budget depends on your commitment and dues payments.

If you have outstanding pledges for dues or donations, please review your August Statement and send the balances in as soon as possible. Thank you in advance for keeping your accounts current.

If you wish to use the ACH method to pay your dues, please note you will have to complete a new ACH agreement with Judy. If you need a new form please contact Judy.

I have included an analysis of the year end financial statements as well as the actual income and expenses as compared to the approved budget. The BOD was fiscally responsible in spending your dues as per the budget. Without several large and generous gifts from previous members we would have had to borrow more funds from our line of credit and/or dip heavily into endowment funds to balance the budget and pay our bills. It is important that we collect dues and have successful fund raisers to continue our existence.

Please remember that we will be having several fundraisers this year to assist in balancing our current budget. I hope that you will all be able to support future fund raisers so that we may remain the strong and vibrant Jewish community we have all known and loved.

Shalom,

*Kathy Rosenfeld*

Congregation Emanu El Income Statement  
for the Period Ending  
30-Jun-19

	Jun 30 2019	Jun 30 2018	\$ Change	Year To Date	Annual Budget
<b>Income</b>					
Total 30000 - Dues	\$ 9,447	\$ 15,158	\$ (5,711)	\$ 257,970	\$ 310,000
Total 30001 - Temple donations	\$ 1,706	\$ 1,006	\$ 700	\$ 236,994	\$ 27,000
Total 30002 - High Holy Days	\$ 1,258	\$ 977	\$ 281	\$ 35,432	\$ 33,000
Total 30003 - Temple Use + Fees	\$ 706	\$ -	\$ 706	\$ 12,081	\$ 4,500
Total 30004 - Walls	\$ -	\$ 737	\$ (737)	\$ 8,673	\$ 15,000
Total 30005 - Bar/Bat Mitzvah	\$ 1,200	\$ 500	\$ 700	\$ 1,700	\$ 500
Total 30008 - Fund Raising	\$ 272	\$ 6,243	\$ (5,971)	\$ 6,072	\$ 31,000
Total 30009 - School for Jewish Living	\$ 25	\$ 216	\$ (191)	\$ 13,384	\$ 14,000
Total 30010 - Temple Programs	\$ (4,654)	\$ 10	\$ (4,664)	\$ 2,592	\$ 900
Total 30012 - Misc. Income	\$ 15	\$ -	\$ 15	\$ 30	\$ 4,000
Total 30013 - Credit Card Fee Income	\$ -	\$ -	\$ -	\$ 3	\$ 500
Total 4030 - Contributions Income - MRF	\$ 17,177	\$ 1,686	\$ 15,491	\$ 51,354	\$ 47,600
			\$ -		
<b>Total Income</b>	<b>\$ 27,152</b>	<b>\$ 26,533</b>	<b>\$ 619</b>	<b>\$ 626,285</b>	<b>\$ 488,000</b>
Total 40000 - Rabbi Expenses	\$ 15,678	\$ 9,166	\$ (6,512)	\$ 146,896	\$ 154,500
Total 40001 - Rabbi Emeritus Expenses	\$ -	\$ 270	\$ 270	\$ 3,666	\$ 5,500
Total 40002 - Cantor's Expense	\$ 14,345	\$ 180	\$ (14,165)	\$ 64,558	\$ 39,000
Total 40003 - Building Operations	\$ (2,854)	\$ 5,112	\$ 7,966	\$ 69,130	\$ 49,800
Total 40004 - Temple Utilities	\$ 3,486	\$ 4,662	\$ 1,176	\$ 32,829	\$ 36,280
Total 40005 - Temple Insurance	\$ -	\$ -	\$ -	\$ 29,323	\$ 35,000
Total 40006 - Administration	\$ 6,477	\$ 6,580	\$ 103	\$ 87,126	\$ 100,995
Total 40007 - School For Jewish Living Exp.	\$ 2,766	\$ 4,116	\$ 1,350	\$ 41,911	\$ 57,775
Total 40008 - Music	\$ 2,216	\$ 1,970	\$ (246)	\$ 26,157	\$ 25,000
Total 40009 - Ritual	\$ 53	\$ 388	\$ 335	\$ 3,659	\$ 5,650
Total 40010 - URI Dues	\$ 980	\$ 980	\$ -	\$ 11,760	\$ 14,500
Total 40011 - Memorial Expenses	\$ -	\$ -	\$ -	\$ 3,371	\$ -
Total 40012 - Community Programs	\$ -	\$ -	\$ -	\$ 4,854	\$ 6,800
Total 40014 - Seniors	\$ 250	\$ 528	\$ 278	\$ 4,424	\$ 2,500
Total 40016 - Property	\$ -	\$ -	\$ -	\$ -	\$ -
Total 41112 - Fund Raising Expenses	\$ -	\$ 2,051	\$ 2,051	\$ 844	\$ 5,200
Total 47160 - Meetings and Conferences	\$ -	\$ -	\$ -	\$ 606	\$ -
Total 6200 - Interest Expense	\$ 4,835	\$ 4,760	\$ (75)	\$ 56,216	\$ 47,600
			\$ -	\$ -	
<b>Total Expenses</b>	<b>\$ 48,232</b>	<b>\$ 40,763</b>	<b>\$ (7,469)</b>	<b>\$ 587,329</b>	<b>\$ 586,100</b>
Total Other Income	\$ 5,387	\$ 47	\$ 5,434	\$ 9,965	\$ -
Total Other Expenses - Loan Fees	\$ -	\$ -	\$ -	\$ 750	\$ -
<b>Net Income</b>	<b>\$ (15,693)</b>	<b>\$ (14,183)</b>	<b>\$ (1,510)</b>	<b>\$ 48,171</b>	<b>\$ (98,100)</b>

## Analysis of Financial Statements for the Year Ending 6/30/19

- The year-end financial statements show a growth in cash and retained earnings due to several generous donations from deceased members. Although we would rather have the members alive and partaking in Temple activities, their generosity enabled the Congregations to reduce the mortgage on the building, fund Temple Programs, and assist in operational needs of the Temple.
- Balance Sheet analysis:
  - Cash increased due to monetary gifts to the Congregations.
  - There has been a slight increase in the Restricted Funds due to investment growth.
  - The principal portion of the mortgage was \$1,399,539 on 6/30/19.
- Income Statement Analysis:
  - We collected \$257,970 in dues for 2018/19 which is 83% of the budgeted amount of \$310,000.
  - Our High Holiday appeal was very successful. We collected more than was pledged: \$35,432.
  - The income from the School for Jewish Living collected \$13,384; close to the budgeted amount of \$14,000.
  - Temple donations were \$236,994 due in part to several large donations from a few individuals. We had only budgeted \$27,000 in donations for the year.
  - Our fundraising income was much lower than budgeted: \$6,072 was collected. We had budgeted \$31,000. It is imperative that we have a successful fund-raising year during 2019/20. Please volunteer to assist in producing fund raising events!
  - The following budgeted line items had expenses lower than budgeted: Temple Utilities, Temple Insurance, Administrative Expenses, School for Jewish Living, Ritual expenses, Community Programs. The savings were incurred in part due to the Temple Administrator, Judy Filsinger, and the Finance Board members reviewing all expenses during the year and not spending any unnecessary funds.
  - The Building Operations line item went over budget due to unexpected repairs and maintenance issues. Now that a Building Operations Fund has been instituted, the Temple will have a fund to assist on any major maintenance issues to arise in the next several years on our aging building. We will not have to rely on Temple dues to sustain the maintenance on the facility.
  - The Cantor's Expenses Line Item went over budget due to timing issues of payments. The June 2018 expenses were not paid until July 2019 and therefore appeared on this year's financial statements. In addition, there were several additional non-budgeted appearances by the Cantor in this fiscal year.
  - The Senior program went over budget this year due to the vibrant programs that were held.
  - Overall, the total expenses of \$587,329 were slightly more than the budgeted amount of \$586,100.
- The Temple ended the year with net income of \$48,171. We had anticipated a loss of \$98,100. The generous donation of \$180,000 from the Burt Orland family created the positive financial position for us this year.



### **Mental Health Awareness in Action**

Homelessness, jail, and mental illness are an unholy combination that demonstrates the failure of our society to care for those who need care.

When mental illness is recognized early, accepted as the brain disease it is, and treated professionally and kindly, most people can live good lives with their disorders. But too often denial, caused mostly by stigma, interferes with getting needed treatment. And society is reluctant to acknowledge the reality and fund the programs, doctors, and facilities to adequately respond to the need. Those failures also spring from misunderstanding and stigma.

The result is a bad mixture of homelessness, petty crime, provoked violence. We hear about people with mental illness who have a crisis that ends in a deadly confrontation with untrained police officers. We hear about county jails and state prisons full of 'inmates' who are unable to control their behavior, and who do not get needed psychiatric treatment. We hear from prison wardens who are overwhelmed because they have no training in dealing with people with mental illness and who know their charges do not belong in prison. In our cities more and more homeless are gathering. Of course, much of that is due to our economic system. Yet we all know, the number of homeless with mental disorders is very high.

We are our society. We can respond personally and politically to reduce the stigma, to talk openly and compassionately about brain disease, to work for more funding to provide treatment to those who need it.

People with mental illness rarely belong in jail. They don't belong on the streets either. They need doctors, psychologists, treatment, respect, and love.

**Heidi Nimmo and Nancy Sidhu**

Co-Chairs, Mental Health Awareness In Action (MHAIA)

## **From Our New Director of Education & Youth**



Dear Emanu El Families,

My name is Marcela Lavi and I'm very excited to join Congregation Emanu El as your new Director of the Education and Youth.

I am an educator from Israel with experience working with children from a wide range of ages. At the beginning of my career, I worked with first and second graders & later kindergarteners in Israel for 17 years. Most recently since I moved to Riverside with my family, I also worked at Temple Beth El in Riverside in the religious school.

I lived most of my life in Jerusalem and at the age of 14 had my Bat Mitzvah in a reform temple in Jerusalem, a special experience in my life which I will never forget. I look forward to sharing my love & passion for Jewish education and Israel with you and your children. I feel it is vital to pass onto to our children the value of our Jewish traditions, rituals, holidays and prayers.

I'm married to Avi, an environmental chemist; I'm the mother of Noa, 14 and Omri, 10. We came to the United States 4 years ago, lived two years in Madison, Wisconsin and the last two years in Riverside. My family and I look forward to becoming part of our Emanu El community. Please feel free to e-mail me or reach out to set up a meeting so we can get to know each other and I can best meet you & your family's needs.

In gratitude,

**Marcela Lavi**

Director of Education & Youth  
[sjl@emanuelsb.org](mailto:sjl@emanuelsb.org)

### ***School for Jewish Living***

***Sunday, August 11th - 10:00 - 11:30***  
***Registration and Summer Fun***

***Sunday, August 18th - 9:00 - noon***  
***First Day of SJL classes***

# *End of Summer Shul by the Pool!!*

Playful, creative Shabbat evening celebration!  
Led by Rabbi Reznick

Services, potluck Shabbat dinner,  
swimming, music and Oneg Shabbat!!

Erev Shabbat, Friday, August 9th  
6:00 p.m.

Home of Rhian Beutler & Robert Shipway



*Here's what You bring :*

<i>Last Name.....</i>	<i>Brings.....</i>
-----------------------	--------------------

<i>A-D</i>	<i>Salad or Side Dish</i>
------------	---------------------------

<i>E-G</i>	<i>Drinks</i>
------------	---------------

<i>H-L</i>	<i>Appetizers</i>
------------	-------------------

<i>M-Si</i>	<i>Dessert</i>
-------------	----------------

<i>Sm-Z</i>	<i>Main Dish</i>
-------------	------------------



**[Redacted]**  
*Contact temple office to RSVP  
at 909-307-0400  
Let us know what you're bringing, too!*

## Mazal Tov מזל טוב

We extend a Mazal Tov to  
Amanda and Fernando Ramirez  
on the birth of their son  
**James Benjamin Ramirez**

Grandson of Deborah and Daniel Schwartz  
May he grow in health and strength and ever  
bring joy and pride to his family.

## School for Jewish Living Summer SoakFest & Registration



Join us for SJL registration this  
year on Sunday, August 11th from  
10-11:30 a.m.

Come out and join the water play  
fun, while snacking on delicious  
summer treats.

Meet Marcela Lavi, our new SJL  
Director, and get excited for a fun  
new school year.

Get wet and beat the summer heat  
together with your  
SJL family.

All are welcome and invited to come  
out play and meet our new team.



## Elul Prep Class

*Do you love the introspection of the  
high holidays?*

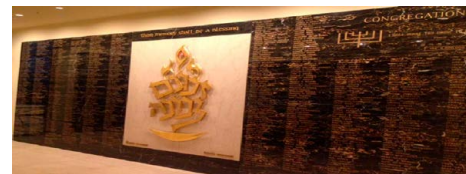
*Are you one who gets excited  
thinking about spiritually preparing for  
Rosh Hashanah & Yom Kippur?*

If so, our High Holyday spiritual  
prep class is for you!

Join Rabbi Reznick & Cantor Bern-Vogel on  
Wednesday, August 21st and Wednesday,  
August 28th from 6:30-8:00 p.m. for some  
spiritual learning, text exploration and practical  
skills to enhance your season of reflection and  
renewal.

Please RSVP to Judy if you will be  
attending this course.

## Upcoming Wall of Perpetual Memorial Dedication



October 4, 2019

All names to be included in the  
upcoming dedication needs to be  
arranged by September 9, 2019.

Please contact Judy Filsinger, our temple  
administrator, in the temple office to  
make arrangements.

## DON'T FORGET - USE SCRIP



We keep a variety of Scrip on-hand at the temple - including grocery stores (Albertson's, Von's Stater Bros. and now Sprouts), gas cards (Arco, Shell), major fast food restaurant chains (Chipotle, Del Taco, El Pollo Loco, Chili's, Red Robin, Macaroni Grill, to name a few, and your favorite coffee shop (Starbucks, Coffee Bean & Tea), home improvement/decorating (Home Depot, Lowe's, Home Goods) and many more!

Local retailer PAWS also participates in our program!  
(Thank you to the Lehmann family!)

Don't forget - we have Harkin's movie tickets, too!

**SUPPORT YOUR CONGREGATION'S SCRIP PROGRAM  
WE EARN WHEN YOU SHOP!**

If you have any questions about the Scrip program, please e-mail  
Julie Strain at [scrip@emanuelsb.org](mailto:scrip@emanuelsb.org)

### Your Sisterhood Gift Shop

Tradition, Heritage, Culture, History... Our CEE Sisterhood Judaica Gift Shop IS YOUR source for living and enhancing your Jewish life.

Gift Shop selections include Jewelry, Gift and Natural Beauty items, *Judaica* as well as items appropriate for other friends and family. Think of us when it's a birthday, anniversary or a "just because" item you need.

We provide a wide variety of Jewish ritual and home items in your gift shop such as: *Shabbat, Holiday (Rosh Hoshanah, Sukkot, Chanukah, Purim, Passover), Candles, Kippot/Yarmulkes, Challah Covers, Mezzuzahs, Tallitot, Candlesticks, Menorahs, Books, Greeting Cards, Seder Plates, Family Games and Children's Items.*

We can special order items that you may need such as tallism, 10-24 Karat gold jewelry, Kettubahs for anniversaries and weddings. Contact Lisa Wise-Wolk with your special order questions.

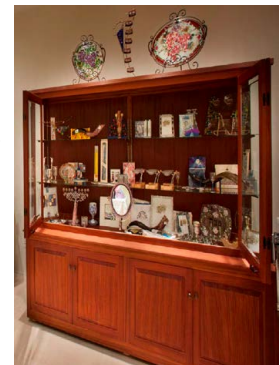
Did you know our congregation was gifted with a full set of 23 volumes of the English Translation of the Zohar? What is that you say? It's the "fundamental foundation of the Jewish mystical tradition of Kabbalah." But of course you know that. So if you are interested in some "not so light summer reading", volumes are available for check out from the gift shop, one volume at a time, at no cost.

Our Back to School/High Holiday sale will be on **August 18, 2019**, the day that SJL is back in session.

We are open by appointment only during the summer months of June through August.

Your Gift shop is staffed by dedicated volunteers. We always welcome new volunteer members to have fun with us as you learn non-profit retailing ( Gift Shop Volunteer Discount may be earned ).

**Lisa Wise-Wolk, Barbara Smith, Phyllis Sweet, Margie Henkin ,**  
2019-2020 CEE Sisterhood Judaica Gift Shop Team



## Happy Birthday!!! יום הולדת שמח

We rejoice with those whose birthdays occur in August and wish them a *Mazal Tov*:

1-August Kevin Posalski  
2-August Margie Orland  
3-August Philip Snofsky  
6-August Irving Warsaw  
7-August Richard Nachman  
7-August Hogan Fenster  
8-August Heidi Nimmo  
8-August Cindy Douglas  
8-August Adam Schwartz  
10-August Alexander Brown  
10-August Kimberly Uffer  
11-August Jack Katzman  
11-August Myriam Acevedo  
11-August Korrynn Katzman  
12-August Chelsea Ferguson  
13-August Dip Sidhu  
13-August Jakob Paisner (16 years old)  
14-August G. Bud Charlick  
17-August Alan Helfman  
19-August Jeffrey Raynes

19-August Annie Swedlove  
19-August Jocelyn Parvin (11 years old)  
20-August Philip Gold  
20-August Benjamin Fagan  
21-August Gerry Porter  
21-August Jake Kurily  
24-August Nicole Smith  
24-August Michelle Smith  
25-August Stephen Levine  
26-August Donna Strain  
27-August Donald Feldman  
27-August Lewis Plaut  
27-August Jay Donenfeld  
28-August Rachel Beasley  
28-August Arya Lalezarzadeh (16 years old)  
28-August Jacob Longoni (12 years old)  
30-August Penny Schwartz  
30-August Richard Malacoff  
31-August Susanne Pastuschek  
31-August Tronie Rifkin



### Grow a Leaf on Our Simcha Tree

Do you have a special occasion to commemorate?  
Anniversary? Bar/Bat Mitzvah? Birthday? Graduation?  
Celebrate it with the entire  
Congregation Emanu El community!  
Purchase a leaf on our beautiful  
Simcha Tree for your special occasion.  
Call the temple office to order your leaf today!

## Happy Anniversary!!!

We extend a hearty *Mazal Tov* to the following whose wedding anniversaries occur in the month of August:

3-August Zeeda & Roy Nierman  
4-August Ina & Aaron Katz  
5-August Janet & Fredric Rabinowitz  
6-August Kathleen & Alan Helfman  
17-August Judy & Morry Miller  
18-August Judy & Martin Handleman  
18-August Barbara & Michael Smith  
18-August Kimberly Wolfe-Morgan & David Morgan

21-August Troy & Beth Freimuth  
22-August Roberta & Philip Gold  
26-August Joanne & Donald Singer  
27-August Susan & Paul Shimoff  
27-August Catherine & Clifford Hiller  
28-August Jennifer & Kevin Posalski  
31-August Jeanette & David Swedlove

## We Gratefully Acknowledge

We gratefully acknowledge these contributions to our various temple funds:

### TEMPLE FUND

*In observance of the Yahrzeits of...*

**Sam Newman** by Phyllis Newman

**Shelley Kamzan** by Phyllis Newman

**Esther Hanover** by Marsha and George Hanover

**Ruth Trainor** by Kathy and Daniel Trainor

**Lucille Upin** by Joanne and Donald Singer

**Rachel Glogas** by Ethel McAfee

**Nelson Feit** by Sheila and Bernie Barrad

**Eve Klingman** by Annette and Lawrence Novack

**Jean Ann Osler** by Judith and Martin Handleman

**Lila Klemtner** by Renee and Michael Kress

**Marilyn Jaffe** by Heidi and Michael Denhertog

**Sylvia Becker** by Vickie and Steven Becker

**Howard Konowitch** by Bonnie Konowitch

**Samuel Kushner** by Lester Kushner

**June Hyman** by Leone and Brad Hyman

*In memory of ...*

**Joe Sadacca** by Joan and Fredric Rubel

**Gloria Cutler** by Lori, David, Ross, Sarah, Gary and Veronika Zelen

**Gloria Cutler** by Eilene and Norman Raiden

**Gloria Cutler** by Ina and Aaron Katz

**Gloria Cutler** by Celia and Sandy Norian

**Gloria Cutler** by Claire Wernecke and Diana Jaffee

**Gloria Cutler** by Joan and Fredric Rubel

**Gloria Cutler** by Margie Orland

**Gloria Cutler** by Ellen Weiss

**Gloria Cutler** by Gwynneth Russler

**Gloria Cutler** by Renee and Michael Kress

**Gloria Cutler** by Sharon and Richard Granowitz

**Gloria Cutler** by Carol Heller

**Gloria Cutler** by Bonnie and Bernie Goler

**Gloria Cutler** by Lia and Mark Robinson

**Gloria Cutler** by Ethel McAfee

**Ron Lubey** by Joan and Fredric Rubel

**Cherrie Lubey** by Joan and Fredric Rubel

**Phyllis Siperstein** by Joan and Fredric Rubel

**Millie Hodes** by Joan and Fredric Rubel

**Donald Feldman** by Joan and Fredric Rubel

**Donald Feldman** by Ellen Weiss

**Donald Feldman** by Annette and Larry Novack

**Donald Feldman** by Ina and Aaron Katz

**Sgt Michael B Riley 10<sup>th</sup> Group US Army Special Forces KIA Afghanistan** by Vickie and Steve Becker

**James Ripley** by Phyllis Sweet

*In honor of ...*

**Jack Schwartz's birthday** by Margie Orland

**Birth of James Benjamin Ramirez** by Margie Orland

### SISTERHOOD PULPIT FLOWER FUND

*In observance for the yahrzeit of ...*

**William Coleman** by Monique Coleman

**Lila Klemtner** by Renee and Michael Kress

**Harold Amerman** by Luan Knotts

**Ethel Zelen** by Lori, David, Gary, Ross, Sarah, and Veronika Zelen

**Nancy Kushner** by Lester Kushner

### HOME OF ETERNITY CEMETERY FUND

*In observance for the yahrzeit of ...*

**Gertrude Loria** by Judy and Morry Miller

*In memory of ...*

**Gloria Cutler** by Esther and Jay Hodes

**Gloria Cutler** by Phyllis Newman

### RABBI LINDY REZNICK'S DISCRETIONARY FUND

*In observance for the yahrzeit of ...*

**Adeline Fenster** by Laura and Jon Fenster

*In honor of ...*

**Installation of New Board and Officers of CEE** by

Renee and Michael Kress

**1<sup>st</sup> Pride Shabbat at CEE** by Renee and Michael Kress

### CANTOR JENNIFER BERN-VOGEL'S DISCRETIONARY FUND

*In memory of ...*

**Gloria Cutler** by Nancy and Sam Elkin

### RABBI HILLEL AND RITA COHN CAMPERSHIP FUND

*In honor of ...*

**Jeremy Rozansky 's graduation from Law School** by

Gwynneth Russler and Brian Tunney

### MORTGAGE REDUCTION FUND

*In memory of ...*

**Gloria Cutler** by Joyce and Barry Eskin

### WILLIAM RUSSLER MEMORIAL FUND

*In observance for the yahrzeit of ...*

**William Russler** by Vickie and Steven Becker

*In memory of ...*

**Sarah Shafer Gersher** by Gwynneth Russler

### SJL FUND

*In honor of ...*

**Charlie Robinson's service to our country** by Vickie and Steve Becker



# Yahrzeits

The following Yahrzeits will be observed during the month of August: Those with a (★) are inscribed on the Wall of Perpetual Memorial:

August 2-3	August 9-10	August 16-17	August 23-24	August 30-31
★Morris Abrams ★Sarah Alexander ★Lena Anker ★Sylvia Becker ★Judith Braviroff Hilda Brownson Enia Ciolko ★Louis Cohen ★Mildred Cohen ★Mollie David ★Randal Earnstein ★Tom Feigenson Brenda Feltenberger Rose Gilbert ★Jack Golden ★Ellen Gruber Philip Gutin Sidney Heyman June Hyman ★Celia Jaffrey Edward Joseph Roberta Jure ★Moses Lerner ★Samuel Levenson Samuel Levine ★Lena Lewis ★Julius Mendelsohn ★Edward Metz ★Abe Meyer ★Alan Michael ★Ben Newberger ★Alex Newman ★Travis Patriquin ★Barney Rosenbloom ★Max Schoenheim ★Gyrtrude Stept ★Grayce Tannenbaum ★Marie Unickel ★J. Leonard Weitzman Benjamin Wise ★Balfour Wixen ★Tanya Wixen ★Nettie Woldenberg ★Sol Zelony	Francisco Acevedo ★Hermine Alexander ★Harold Amerman Beverly Appelbaum ★Rose Bader ★Helen Berk ★Bella Cohen Fanny Cohen ★Leo Cutler ★Selma Davidson ★Charles Edelman Rachel Einbinder ★Hyman Fox ★Estelle Gold ★Sonia Goodman ★Frances Herzig ★Harry Hirsch ★Constance Hochstein ★Dorothy Johnson Al Joseph Leah Kovitz ★Martin Kronick Solomon Lavick Laura Levy ★Bessie Novack ★Sol Parkin ★Joe Philipson ★Sarah Reiter ★Sadye Roth ★Fannie Sabin May Schaffer Jack Wixen	Sally Adams Richard Altheimer ★Albert Bell ★Abrom Belovsky ★Florence Allen Brill ★Paige Cowan ★Isaac Fremland Harriet Gimpel Bertha Goldschlager ★Ruth Greenwood Jon Hankin Lynda Hankin ★Fannie Haydis Theresa Herbstrieth ★Samuel Kassel ★Jerry Kravitz Anne Lowenstein Dave Lubey ★Henrietta Lubey ★Samuel Lubinsky Alex Luchans Marielle Pastushek ★Saydee Philipson Harold Rothstein ★Bernard Rubel ★Selma Shutt Isadore Steinberg Samuel Teitelbaum ★Alex Weiss ★Bluma Weisser	★Martin Barrad ★Mollie Binder Anna Cohen Francelene Cohn ★Morris Coleman Sylvia Diner ★Minnie Einbinder ★Marguerite Feldheym ★Sarah Finkleman Rachel Getzoff ★David Hearsh ★Aaron Jacobs ★Rose Jaffe ★Lester Kantor Helen Kohn ★Bertha Lavitt Elizabeth Lechhook Isaac Lewin Gertrude Lipsky ★Louis Lubinsky Jerry Lurie ★Steven Maltzman Morris Marcus Barney Pasman Harold Pike Linda Pyrtle ★Martha Rosen ★Adele Rosenzweig ★Mary Rushall ★Ida Silk ★Elias Simon ★Adelaide Snyder Milton Stern ★Sol Sussman ★Sherwin Tilton Dorothy Todd Bonnie Tonneson ★Jack Trachtenberg ★Fannie Walder	★Kurt Becker ★Leah Blizin Penni Clark ★Jack Cohen Myra Epstein Martin Feldman Muriel Frankel ★Lenore Harris ★Beatrice Kay Micaela Lang ★Yetta Litwin ★Herbert Maltzman Fannie Marcus ★Fred Miller ★Bess Pollack ★Sonia Rovell ★Bertha Sacks Morris Sagal Anne Schwartz Nathan Schwartz ★Isadore Shaller ★Esther Steinsapir ★Harold Victor ★Geraldine Weinstein ★Gertrude Weiss Elaine Wolfson Rose Young



1495 Ford Street - Redlands CA 92373

(909)307-0400

www.emanuelsb.org email:cee@emanuelsb.org

**LINDY REZNICK - RABBI - (909) 307-0400 ext 1000 - rabbireznick@emanuelsb.org**

**JENNIFER BERN-VOGEL - CANTOR - (909) 307-0400 ext 1001 - cantorjenbv@gmail.com**

**HILLEL COHN - RABBI EMERITUS - rabbihcohn1@cs.com**

**JUDY FILSINGER - ADMINISTRATOR - (909) 307-0400 ext 1002 - templeadmin@emanuelsb.org**

**MARCELA LAVI - DIRECTOR OF EDUCATION & YOUTH -**

**JERRY RIPLEY - ORGANIST/CHOIR DIRECTOR**

***EXECUTIVE COMMITTEE***

**Stuart Sweet - President • Joel Feinstein - 1st Vice President • Dr. Susan Damron - 2nd Vice President**

**Michael Reiter - Secretary • Kathy Rosenfeld - Chief Financial Officer**

**Members-At-Large: Steven Becker, Marvin Reiter, Justin Swant**

**Greg Weissman - Immediate Past President**

***DIRECTORS***

**Steven Becker • Harriet Briant • Rhian Beutler • Jay Donenfeld**

**Rachael Raynes • Julie Strain • Justin Swant • Scott Wilkie**

**Karyn Lehmann - President, Sisterhood**

***Member of Union for Reform Judaism (URJ)***

**OFFICE HOURS - Monday-Thursday 9:00AM to 5:00 PM; Friday 9:00 AM-4:00 PM**

**THE BULLETIN - CONGREGATION EMANU EL**

**Published monthly by Congregation Emanu El, 1495 Ford Street, Redlands CA 92373.**

**POSTMASTER: Send address changes to Congregation Emanu El, 1495 Ford Street, Redlands CA 92373**