



Congregation  
Emanu El

# THE BULLETIN

1495 FORD STREET · REDLANDS · CALIFORNIA · 92373 · (909) 307-0400

JUNE 2018

SIVAN - TAMMUZ 5778

VOLUME XLVI - NUMBER 8

## SHABBAT CELEBRATIONS



**Friday - June 1, 2018 - 7:00 pm**

Led by Rabbi Crystal, Michelle Anctil and Michele Zipperstein  
Oneg Shabbat following the service

**Saturday - June 2, 2018**

*Torah Study led by Rabbi Crystal - 9:15 to 9:45am*

**SHABBAT MORNING SERVICE AT 10:00 AM**

Led by Rabbi Crystal, Michelle Anctil and Lisa Wise-Wolk

Parashat Be-ha-alotecha - פרשת בהעלותך - Numbers 8:1-12:16

Haftarah - Zechariah 2:14-4:7 Kiddush following the Service



**Friday - June 8, 2018 - 7:00 pm**

Led by Rabbi Crystal and Cantor Bern-Vogel

Oneg Shabbat following the service hosted by Karyn & Stephen Lehmann

**Saturday - June 9, 2018**

*Torah Study led by Rabbi Crystal - 9:15 to 9:45am*

**SHABBAT MORNING SERVICE AT 10:00 AM**

Led by Rabbi Crystal, Michelle Anctil and Mary Lynn Stough

Parashat Shelach Lecha - פרשת שלח-לך - Numbers 13:1-15:41

Haftarah - Joshua 2:1-24 Kiddush following the Service



**Friday - June 15, 2018 - 7:00 pm**

Led by Rabbi Crystal and Cantor Bern-Vogel

Expressing Appreciation to Rabbi Crystal for his service

Oneg Shabbat following the services hosted by Elaina & Marv Reiter in honor of their anniversary

**Saturday - June 16, 2018**

*Torah Study led by Rabbi Crystal - 9:15 to 9:45 am*

**SHABBAT MORNING & HEALING SERVICE AT 10:00 AM**

Led by Rabbi Crystal and Cantor Bern-Vogel

Parashat Korach - פרשת קרח - Numbers 16:1-18:32

Haftarah - I Samuel 11:1-12:22 Kiddush Following the Service



**Friday - June 22, 2018 - 7:00 pm**

Led by Rabbi Cohn and Cantor Bern-Vogel

Rabbi Cohn will speak on "My Favorite Biblical Verse"

Oneg Shabbat following the service

**Saturday - June 23, 2018**

*Torah Study led by Rabbi Cohn - 9:15 to 9:45 am*

**SHABBAT MORNING SERVICE AT 10:00 AM**

Led by Rabbi Cohn & Cantor Bern-Vogel

Parashat Chukat - פרשת חקת - Numbers 19:1-22:1

Haftarah - Judges 11:1-33 Kiddush Following the Service



**Friday - June 29, 2018 - 7:00 pm**

Shabbat Led by Rabbi Cohn & Cantor Bern-Vogel

Rabbi Cohn will speak on "My Favorite Prayer"

Oneg Shabbat following the service hosted by Lisa Wise-Wolk & Kerry Wolk in honor of their birthdays

**Saturday - June 30, 2018**

*Torah Study led by Rabbi Cohn - 9:15 to 9:45 am*

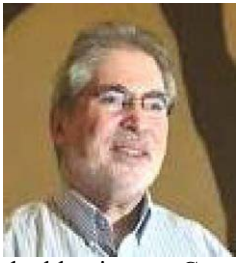
**SHABBAT MORNING SERVICE AT 10:00 AM**

Led by Rabbi Cohn and Cantor Bern-Vogel

Parashat Balak - פרשת בלק - Numbers 22:2-25:9 Haftarah - Micah 5:6-6:8

Kiddush following the Service

## Rabbinic Reflections



### For Our Blessings

The first Shabbat I joined Congregation Emanu El I spoke about blessings. How we find blessings in our lives and how we affirm blessings we share with others. As we conclude the year together I would like to reflect on

the blessings of Congregation Emanu El.

*The Blessing of Caring.* I am moved by the depth of caring members share with each other. In many ways this is symbolized each Friday evening when we share our *Shehecheyanu Moments – The Joys We Have Experienced in the Last Week*. As much as the precious times we share from anniversaries to birthdays to graduations, is the joy congregants and guests take in hearing each others *simchas* (joys).

The temple community deeply cares for one another when a member experiences an illness, difficult life moment, or death in their family. The outpouring of support, calls and prayers is a blessing!

*The Blessing of Dedication.* The number of people who volunteer to support the temple and insure its future is extraordinary. It would be impossible to name everyone and the many things they do – we think of everyone who works with Sisterhood, the many people who helped with the Gala, Casino Night and SCRIP, our Shabbat Service leaders and the choir who bless us with song, the volunteers with Seniors for Seniors, everyone who helps with the office and the building, parents who work with the school, the members of the board and everyone who helps in so many ways at the temple. Special thanks go to our Greg Weissman, our president and Stuart Sweet, our vice president for their commitment. We express our gratitude to everyone who works at the temple. They are always there to help and to greet us with smiles.

*The Blessing of Spirituality and Jewish Learning.* The number of people who have participated in adult classes and workshops has been wonderful. Congregation Emanu El expresses a commitment to Jewish spirituality through Rosh Chodesh, the Women's Seder, the Chant and Meditation Service, Healing Service and other activities where we affirm the presence of the Divine in our lives.

*The Blessing of Social Justice.* Service to our community is one of the foundations of Congregation Emanu El. Mitzvah Day, Interfaith programs and community service, participating in marches to end gun violence and for women's rights, speakers who inspire us and our connection to social justice in the Reform movement all demonstrate the ways Congregation Emanu El is active in the community.

Debbie Friedman's song *L'chi Lach* talks of the blessings of the Jewish community which began with Abraham and extend throughout the generations. Her words, "And you shall be a blessing, and you shall be a blessing" express the spirit of this holy congregation. May you grow from strength to strength.

L'Shalom,

*Rabbi Darryl Crystal*

## Cantorial Comments



### Transitions...and the power of song...

Transitions are challenging as well as exciting times. After counting 49 days from Pesach until Shavuot, the countdown is now on until Rabbi Lindy Reznick begins a new chapter with us at Congregation Emanu

El! In the meantime, we have just a couple of weeks to offer our farewells to our Interim Rabbi Darryl Crystal, who has served us with great devotion and caring this past year. Change is not new to our congregation but we have come a long way since last June, and I believe our hearts and minds are in a healthier and more open place for transition. From my sacred Hebrew Chanting practice with Rabbi Shefa Gold, we can be reminded that music, chanting and prayer meditation allow you to transcend the places of discomfort and rather trust where you find yourself in the moment.

Every Shabbat has the potential for spiritual transcendence. Music is one of the most important tools we have to open our hearts, minds and fill our souls. We alternate and rotate melodies from one week to another, so things don't get too boring, but we also recognize the power of familiarity. One of Rabbi Abraham Joshua Heschel's writings about Shabbat suggests "The primary purpose of prayer is not to make requests. The primary purpose is to praise, to sing, to chant. Because the essence of prayer is a song, and man cannot live without a song. A Chinese proverb I recently heard delighted me in its simplicity: "a bird does not sing because it has an answer. A bird sings because it has a song."

Together with our choir, there will be special music and joyous celebration as we honor Rabbi Crystal on Friday, June 15. Saturday, June 16<sup>th</sup> is another opportunity to attend a Healing Service. Be prepared simply to come and be present, pray, sing, and possibly offer personal stories of struggle and triumphs in your own Healing journeys – be it through physical pain, grief, loss or celebration. We hope you will join us for these special services. As we transition to Rabbi Reznick gracing our bima, Rabbi Cohn and I will be leading services for the remainder of June.

*"The wave of a song carries the soul to heights which utterable meanings can never reach."*

*Nachman of Breslov*

*B'shalom,*

*Cantor Jennifer Bern-Vogel*

**P.S. – Please contact me ASAP if you are interested in chanting/reading Torah or Haftarah for Rosh Hashanah and/or Yom Kippur!!**

## Presidential Perspectives



Our Annual Congregational Meeting and Bar-B-Que on May 17 was well attended with close to seventy members present. Several agenda items were presented and discussed with some being voted on by the congregation. Vice President Stuart Sweet presented a list of revised by-laws that were unanimously approved by a congregational vote. Immediate Past President Craig Beasley presented the Nomination Slate of incoming Temple Officers and Directors, which too was approved by an unanimous congregational vote. Board member Julie Strain presented a proposal for switching from our current High Holy Day Prayer book to Mishkan Hanefesh, which comes as a two book set, one for Yom Kipper and one for Rosh Hashanah. This initiative too was widely embraced by congregants; and following the Annual Meeting the Board of Directors met to cast its formal vote, which passed unanimously. Thanks to Lisa Wise-Wolk and Kerry Wolk for underwriting the cost of the first one hundred copies. A campaign is now underway to finance another hundred copies at a cost of \$50.00 per set. Please consider purchasing a set of Mishkan Hanefesh in honor of or in memory of a loved one. Please see our Temple Administrator Judy Filsinger for more information. Orders must be submitted by August 1.

As it does every year, Sisterhood presented at the Annual meeting a very generous financial gift. Karyn Lehmann presented a check for \$13,000 on behalf of Sisterhood and \$2500 on behalf of the Sisterhood Gift Shop. We sincerely thank Sisterhood for their continued commitment and generosity to our Temple. Julie Strain too presented a check in the amount of \$8,000 on behalf of the Scrip Committee. As we always say: Buy Scrip through the Temple office. It's an easy way to help support our Temple.

We were fortunate to have Rabbi Lindy Reznick present at our Annual Meeting. Rabbi Reznick took this opportunity to learn about some of the inner-workings of our Temple while greeting and getting to know many of our congregants. We look forward to Rabbi Reznick's arrival on July 1, and her first Erev Shabbat service on July 6. Please plan to attend this special service to welcome Rabbi Reznick and her children, Clara and Isaiah, to our Temple family.

I'd like to again wish a Mazel Tov to Susan and Paul Shimoff for receiving the Rabbi Norman F. Felheym Award on April 21. As part of this award, the Journal which accompanies it generated \$96,900.00, making it the single largest Temple fundraiser in recent memory. Thanks to Co-Chairs Karen Levine and Margie Orland, who along with Ellen Weiss, Cherrie Lubey, Stacy Knox, Cheryl Sukenik and Stuart Sweet made this event one to remember and be truly proud of.

Finally, I would like to thank Rabbi Darryl Crystal for his work this past year. Rabbi Crystal has brought a calm and balance to our congregation which makes us well poised to welcome our incoming Rabbi. As a congregation, we will formally say goodbye to Rabbi Crystal during an Erev Shabbat service on June 15. Please join me in wishing Rabbi Crystal safe travels and best wishes as he begins his next Rabbinic assignment in Virginia.

*L'Shalom,*

*Greg Weissman*

## Treasurer's Report



Dear Fellow Congregants,

They say time flies when you're having fun. Well these last two years have just flown by! It has been very rewarding being the treasurer for Congregation Emanu El both in the satisfaction of accomplishing our continuing viability as well watching most of you stepping up when we needed your support both financially and spiritually.

We have reduced our Long-Term debt by close to One Million Dollars! Yes, \$1,000,000.00! We have reduced our monthly cash outlay almost One Hundred Thousand Dollars per year! Yes, \$100,000.00! We were able to do this with your commitment and support.

That said, you will be receiving your annual dues letter within the next 30 days. Please be as generous as you can. Know in your hearts that the future of Judaism in our community is in your collective hands. You all have benefited from the support of the previous generations of Jews in this area. Please continue our legacy for the benefit of the future generations of our people.

We are embarking on a new journey, yes again, but this time we are confident that we will have leadership on the pulpit that we have not enjoyed for too many years. With the reduced demand on our finances, we are hopeful we can add programs that will enhance our ability to grow and provide meaningful service to our Jewish community.

Our Board of Directors has membership that is made up of dedicated people who are committed to the success of the Congregation first and foremost. I am most confident that our new treasurer, Kathy Rosenfeld, CPA, will continue to move us in a direction that is most prudent, frugal and insures the long term viability of Congregation Emanu El. She brings intelligence, dedication and commitment to the fiduciary role as a good custodian of our heritage that officially began in 1891. In addition, she has the experience of serving in the role of treasurer in the past prior to relocating to our area. I am sure you will appreciate her service.

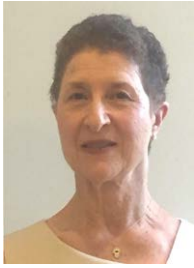
It has been my pleasure to have been your treasurer.

Warm regards,

**Marvin Reiter**



## Sisterhood Speaks



Our incoming Sisterhood board will be voted on at our final brunch on Sunday, June 3 and installed on Friday, June 9. We invite everyone to join us for brunch on that Sunday. Our incoming rabbi, Lindy Reznick will lead a discussion of inspiration and friendship, "Where you go, I will go." Sharing Our Stories Across Generations. The weekly Emanu El-electronic News and this bulletin will provide further details. This will be a thought-provoking and enriching morning -- not to be missed!

The outgoing Sisterhood board has been a group of extraordinary women. We have worked so hard together this year. And I think we can congratulate ourselves on a very successful year. I hope that everyone who participated in a Sisterhood event or program found it time well spent. I know I enjoyed meeting and worshiping with all of you. If you haven't had the pleasure of joining Sisterhood or coming to one of our events, plan to join us next year. (Or better yet, start by attending the June 3 brunch!)

Thank you to the outgoing Sisterhood board: Barbara Smith, Debra Holder, Francesca Sweet, Jill Weissman, Karyn Lehman, Lisa Wise Wolk, Lori Fenster, Cherrie Lubey, Margaret Shattuck, Pat Kriso, Margie Henkin, Michele Zipperstein, Paula Kaye, Phyllis Sweet, Susan Damron, Susanne Pastushek. With all my heart, I appreciate the work you have done for Sisterhood and Congregation Emanu El.

*Leslie Soltz*

*President, Sisterhood*

**Temple Board of Directors Meeting**

**June 21, 2018, 7:00 pm**

**Members of the congregation are always welcome.**

**Sisterhood Board Meeting**

**Sunday, June 24, 2018, 10:00 a.m.**

**All Sisterhood Members are welcome**

## From Our Director of Education & Youth



Shalom Emanu El families!

The students and staff at the School for Jewish Living are getting ready to say goodbye to classes for the summer. This month, we are focusing on assessing Hebrew skills and finishing up Hebrew texts. We will honor our teachers with a short ceremony on June 3<sup>rd</sup> – our teaching staff has been an absolute blessing to our school this year and I look forward to letting them know how important they are to us. We will be saying goodbye to Moriah and Grace as they move on to new adventures. We wish them well and I know we will all miss them very much.

We will end the year with a small brunch and fun activities at Ford Park on June 10<sup>th</sup>.

We have had a year filled with change, learning, celebration, and friendship. I look forward to a summer of planning enriching school programs, engaging class experiences, and helping to create a smooth transition to a new Rabbi and a new school year.

*L'shalom*

*Jillian Snyder*

*Director of Education & Youth*

**End of the year SJL picnic**

**June 10th - 9:30 a.m.**

**Ford Park**

**Please join us for fun in the sun  
on our last day**



### **Mental Health Awareness in Action**

We look up to our sports heroes as towers of mastery and strength, but like the rest of us, they're fully human, with weaknesses and problems. Last month we brought you the story of Kevin Love, an NBA basketball player who deals with panic attacks.

This month, we bring you another sports star, "one of the biggest stars in the game," according to the British Broadcasting Corporation. The game they're referring to is cricket. And Sarah Taylor is an all-important wicketkeeper. We haven't the faintest idea what exactly a wicketkeeper does, but the BBC assures us it matters a lot.

What is clear is that Sarah Taylor is a young, beautiful, strong woman, and she suffers from debilitating anxiety attacks. She also has attained heights in her game that no other woman has reached. And yet in 2016, she had to drop out, spending two months in bed, overwhelmed by fear and, without cricket, feelings of meaninglessness. Luckily, she was wise enough to get a puppy, having heard that dogs are good for mental health. That snub-nosed pup forced her out of bed, requiring regular walking and regular food that Sarah had to go buy at the market, and gradually she found her balance and energy again. "My life changed.....[the pup] gave me purpose again."

She's back in the game now, with her teammates helping her when she gets super stressed on the field, using coping skills she's learned from her coach, enjoying cricket and the game of life again.

If you can tell us what a wicketkeeper is we'll give you a prize – a green ribbon from Each Mind Matters.

Thanks for wearing the ribbons and having conversations about mental illness during Mental Health Awareness Month. Don't stop now. Tell your stories, and listen to others'

**Heidi Nimmo and Nancy Sidhu**

Co-Chairs, Mental Health Awareness In Action

## **Seniors for Seniors**

*For seniors of the greater San Bernardino-Redlands-Highland-Banning-Mountains and surrounding communities*

**JOIN US AT OUR NEXT MONTHLY LUNCHEON**

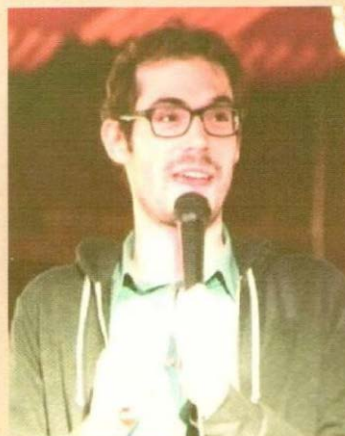
**WEDNESDAY - JUNE 20, 2018**

**11:45 AM**

**CONGREGATION EMANU EL  
1495 FORD STREET - REDLANDS**

***"A Time To Laugh..."***

**FEATURING COMEDIAN  
MAX ROSENBLUM**



Max Rosenblum is a stand up comedian, writer and actor based out of Los Angeles. Max has been entertaining audiences all over the country at venues big and small with his self-deprecating and optimistically pessimistic outlook. Max has performed at numerous comedy festivals around the country. He is sure to provide us with lots of laughs...

**INVITE YOUR FRIENDS TO JOIN YOU!!!**

**DELICIOUS CATERED LUNCHEON**

**\$10.00 PER PERSON**

**RESERVATIONS MUST BE MADE BY**

**MONDAY - JUNE 18TH**

**BY CALLING OR EMAILING THE TEMPLE**

**(909)307-0400**

**email: [cee@emanuelsb.org](mailto:cee@emanuelsb.org)**

Please try to bring a can or jar of unperishable food (such as peanut butter) that can be given to agencies that provide food for the homeless of our community.

**Special Shabbat  
Friday, June 15, 2018  
7:00 pm**

**Join us as we honor and  
express our appreciation to  
Rabbi Darryl Crystal, our Interim Rabbi**



**This will be Rabbi Crystal's last shabbat with our  
congregation. We wish him a fond farewell as he moves  
on to serve Temple B'nai Shalom in Virginia.**



# *Installation of Officers*

You are cordially invited to attend

## **Shabbat Services**

during which the

## **Installation of Officers and Directors**

of

## **Congregation Emanu El**

and

## **Sisterhood**

will take place

**Friday - June 8, 2017 - 7:00 pm**

### **Congregation Officers and Directors to be Installed**

Gregory Weissman - President  
Stuart Sweet - 1st Vice President  
Joel Feinstein - 2nd Vice President  
Kathy Rosenfeld - Treasurer  
Dr. Susan Damron - Secretary  
Stacy Knox - Financial Secretary  
Craig Beasley - Immediate Past President

### **Directors to be Installed**

Term ending 2019  
Margie Orland  
Susan Shimoff  
Justin Swant

Term ending 2020  
Steven Becker  
Harriet Bryant  
Sheri Maltzman  
Julie Strain

Term ending 2021  
Jay Donenfeld  
Harriet Herman  
Michael Reiter  
Scott Wilkie

### **Sisterhood Officers to be Installed**

Leslie Soltz - President  
Karyn Lehmann - First Vice President  
Cherrie Lubey - Treasurer  
Kimberly Wolfe-Morgan -  
Recording Secretary  
Michele Zipperstein - Corresponding Secretary  
Susan Damron - V.P. Programs  
Barb Smith and Paula Kaye - V.P. Membership  
Karyn Lehmann and Jill Weissman -  
V.P. Ways and Means (Fundraising)  
Lisa Wise-Wolk - Gift shop  
Margaret Shattuck - Gift Shop Treasurer  
Deb Holder & Susanne Pastushek -  
V.P. Religion, Education & Youth  
Francesca Sweet - Parliamentarian

# **Welcome Our New Rabbi!**

**Lindy Reznick**

**Friday, July 6, 2018  
7:00 pm**



**Rabbi Reznick will be leading her first  
Friday night Shabbat Service at  
Congregation Emanu El**

**Please plan to join us in welcoming  
Rabbi Reznick and her family  
to our congregation**

**Special Oneg Shabbat following services  
sponsored by the Board of Directors**



## Happy Birthday!!! יום הולדת שמח

We rejoice with those whose birthdays occur in June and wish them a *Mazal Tov*:

1-June	Craig Beasley	18-June	Phyllis Sweet
1-June	Kevin Foist	18-June	Ashleigh Wilkie
2-June	Jacob Parvin (13 years old)	20-June	Ronald Blumberg
2-June	Carole Wizer	21-June	Rhian Beutler
3-June	Louise Gorenberg	22-June	Justin Bauer
3-June	Kimberly Wolfe-Morgan	22-June	Walt Van Horn
4-June	Paul Snyder	24-June	Sharon Granowitz
6-June	Joyce Eskin	24-June	Edith Stelzer
6-June	Renee Kress	24-June	Zoe Swant (9 years old)
8-June	Joseph Bodnar	25-June	Samantha Becerra
13-June	Susan Shimoff	25-June	Carol Heller
14-June	Marla Drake	26-June	Jack Schwartz
14-June	Enrique Lewin	27-June	Brian Spears
15-June	Judyth Buchband	28-June	Sunny Rabenstock
16-June	Hannah Levine	29-June	Jeffrey Kropf
17-June	David Fagan	30-June	Richard Taylor
18-June	Maya Lang		

## Happy Anniversary!!!

We extend a hearty *Mazal Tov* to the following whose wedding anniversaries occur in the month of June:

2-June	Laura & Jon Fenster	21-June	Jake Kurily & Peytra Becker-Kurily
5-June	Corinne & Cyril Kaicener	21-June	Bonnie & Bernie Goler
6-June	Lisa Wise-Wolk & Kerry Wolk	22-June	Leone & Bradley Hyman
11-June	Ira Vogel & Cantor Jennifer Bern-Vogel	22-June	Julianne & Mark Strain
11-June	Francesca & Stuart Sweet	22-June	Tamara & Jeffrey Verschell
11-June	Jill Gregory & Weissman	24-June	Sharon & Richard Granowitz
14-June	Diane & Donald Feldman	26-June	Daniel & Kathy Trainor
16-June	Kevin Foist & Deborah Salow	27-June	Sharon & Gary Eirew
17-June	Elaina & Marvin Reiter	27-June	Ann & Asher Sheppard
19-June	Bernice & Barry Lowenstein	29-June	Delores & Melvin Eirew
20-June	Renee & Michael Kress	29-June	Leah & Avigdor Etzioni
20-June	Susan & Howard Snyder		

### Grow a Leaf on Our Simcha Tree



Do you have a special occasion to commemorate?  
Anniversary? Bar/Bat Mitzvah? Birthday? Graduation?  
Celebrate it with the entire  
Congregation Emanu El community!  
Purchase a leaf on our beautiful  
Simcha Tree for your special occasion.  
Call the temple office to order your leaf today!

## **We Gratefully Acknowledge**

We gratefully acknowledge these contributions to our various temple funds:

### **TEMPLE FUND**

*In observance of the Yahrzeits of...*

**Rebecca Press** by Thelma Press

**Jennie Gross** by Mildred Hodes

**Rubin Keyser** by Irene Schapiro

**Juda Katz** by Lia and Mark Robinson

**Kathryn Fannin** by Kathleen and Daniel Trainor

**Raymond Weiner** by Barbara and Michael Smith

**Jocelyne Schwartz** by Jack Schwartz

**Jack Rifkin** by Tronie and Charlotte Rifkin

**Sandra Lubell** by Jeffrey Lubell

**Barbara Kartun** by Karen Kartun

**Gigi Ryan** by Harriet Herman

**Barbara Jo Schapiro** by Irene Schapiro

*In memory of...*

**Abraham Glogas** by Ethel McAfee

**Jeffrey Wixen** by Ellen Weiss

**Betty Zelman** by Vickie and Steve Becker

**Esther Hanover** by Norman Hanover

*In honor of...*

**Sarah Spears'** graduation from law school by Vickie and Steve Becker

### **SISTERHOOD PULPIT FLOWER FUND**

*In observance of the Yahrzeits of...*

**Elka Ellison** by Amy Ellison

**Frank Coleman** by Monique Coleman

### **HOME OF ETERNITY CEMETARY FUND**

*In observance of the Yahrzeits of ...*

**Max Chodak** by Gloria Snyder

**Morris Ellison** by Amy Ellison

**Doris Moss** by Sonia Moss

*In memory of ...*

**Betty Zelman** by Amy Ellison

**Sylvia Zagha** by families of Judi Oltman and Nancy Rich

### **LANDSCAPE FUND**

*In observance of the Yahrzeits of ...*

**Art Pickus** by Leone and Brad Hyman

*In memory of ...*

**Jeffrey Wixen** by Leone and Brad Hyman

### **SCHOOL FOR JEWISH LIVING FUND**

*In memory of ...*

**Leo Berger** by Cynthia and Philip Berger

**173<sup>rd</sup> Airborne Paratroopers and 10<sup>th</sup> Group Special**

**Forces Green Berets KIA Iraq and Afghanistan** by Vickie and Steve Becker

### **WILLIAM RUSSLER MEMORIAL ARCHIVES FUND**

*In observance of the Yahrzeits of ...*

**William Russler** by Nicole Russler

*In memory of ...*

**Betty Zelman** by Vickie and Steve Becker

On occasions of joy or sorrow a contribution to one of our temple funds  
is always appropriate.

Contribution can be made to the following funds:

Home of Eternity Cemetery Fund  
Temple Fund  
Rabbi Crystal Discretionary Fund  
Rabbi Cohn Discretionary Fund  
Cantor's Discretionary Fund  
William Russler Memorial Archives Fund  
Mortgage Reduction Fund  
Sisterhood Pulpit Flower Fund  
Rabbi Hillel & Rita Cohn Campership Fund  
Lionel Heller Music Fund  
Landscape Fund

# Yahrzeits

The following Yahrzeits will be observed during the month of June: Those with a (★) are inscribed on the Wall of Perpetual Memorial:

June 1-25	June 8-9	June 15-16	June 22-23	June 29-30
★Raymond Alva ★Carl Barkan ★Israel Berger David Boyd ★William Coleman ★Abraham Davis ★Max Finkleman ★Ida Fohrman ★Freda Fredason ★Isadore Gelsin ★Yoav Gilad ★Rosella Gold Ezriel Gordon ★Sophie Grossman ★Joseph Jarsky ★Barbara Kassel ★Max Kater Edith Kaufman Emanuel ★Bunea Kipper ★David Malacoff Dorothy Marks Patricia Miellmier Max Millman Israel Mishkovsky vLouis Nemeth ★Israel Nourok ★Rebecca Rieger Kathlyn Rogers Harry Rothman Gigi Ryan Harvey Sadacca ★Lillian Saxon ★Barbara Schapiro ★Theodore Serlin ★George Shenkman Shoshana Simon ★Adam Smith Anna Stein ★Anna Stein Sarah Tilton ★James Unickel Joseph Weinberg ★Sam Weinberg ★Ida Wiseman Clayton Woodward-Fisher	★Abraham Alexander ★Frieda Amerman ★Bessie Arbeitsman ★Saul Birnkrant ★Meyer Borsuk Vita de Mendez ★Irving Donenfeld ★Fannie Fish Norman Gaynor Miriam Gideon Fanya Glatt ★Fanny Greenhood Hyman Henkin Morris Horwitz Sophia Jarsky ★Bertha Kassel Jeanette Kitay ★Sarah Lerner ★Beila Litsky Anne Luchans ★Anna Mendelsohn ★Rose Modes Harry Norian ★Claudia Rodman Judy Rose June Rothman ★Fannie Russler Mira Salamon Caroline Schlesinger ★David Simon Ruth Smith Mary Stefanoski Sylvia Wallach ★William Wilkin Herbert Zeller Karl Zwick	★Rose Barrad ★Irmgard Blum ★Ronald Boatman ★Adele Carsman Brian Cushing ★Esther Davis Eva Emanuel- Westerling Gerald Fine ★Raymond Fox ★Edward Gottlieb ★Abe Granish ★Don Harris ★William Jaffrey Sonny Katzman ★Sylvia Kaufman Lila Klemtner ★Leon Lapidis Millie Lucas ★Lauren Mayfield ★Paul Newman Lena Noodelman Harry L. Osler Linda Prestidge Sheldon Rothstein ★Florence Slabodkin ★Jennie Smith ★Philip Suchow Fanny Volk ★Philip Weisser Georgia Weissman	★Bernice Berenbaum ★Frances Bertman ★Rabbi Franklin Cohn Nathan Cooperberg Al Corbin Jack Diner ★Herman Eliot ★Howard Forman Mindy Frankel ★Israel Gerstein ★Henrietta Greenwald ★Harold Heller Nettie Henkin Harold Hepner Shirley Hosmann Gabriela Katz Annalee Knotts Montye-marie Lawrence ★Maurice Lerner ★John Libman ★Philip Miller Ruth Minkoff ★Mark Myers Ida Pressman Al Rosen ★Mignon Schweitzer Leonard Smith Lucille Upin Arlene Wolf Reba Zeller ★Nathan Zipperstein	★Bessie Abramson Marjorie Antelam ★Leonard Becker ★Sarah Berenbaum ★Herman Berzosky ★Jay Bogost ★Michael Braviroff Ryan Clark ★Miriam Cohn ★Hyman Einbinder ★Louis Forman Libby Frug Meyer Gershman Benjamin Golant ★Dora Goldstein ★Fred Goldstein ★Sara Gottlieb Harry Handleman Sophie Harris ★Brock Heitman Aida Herzog ★Shelley Kamzan ★Nancy Kushner ★Gustave Levenson ★Isadore Lewis Isadore Marx ★Sally Meimar Sally Melmar ★Eliot Moss ★Samuel Newman ★Nathan Quadow ★Harry Reiter ★Sara Robin ★Henrietta Rowelsky ★Joseph Russler ★Charles Silverberg ★Mary Skadron ★Warren Stept Paulette Stewart Edith Weisser Stanley Widman Kilby Wiggins ★Eleanore Zipperstein





1495 Ford Street - Redlands CA 92373

(909)307-0400

www.emanuelsb.org email:cee@emanuelsb.org

**DARRYL CRYSTAL - INTERIM RABBI - (909) 307-0400 ext 1000 - dcrystal@emanuelsb.org**

**JENNIFER BERN-VOGEL - CANTOR - (909) 307-0400 ext 1001 - cantorjenbv@gmail.com**

**HILLEL COHN - RABBI EMERITUS - rabbihcohn1@cs.com**

**JUDY FILSINGER - ADMINISTRATOR - (909) 307-0400 ext 1002 - templeadmin@emanuelsb.org**

**JILLIAN SNYDER - DIRECTOR OF EDUCATION & YOUTH -**

**JERRY RIPLEY - ORGANIST/CHOIR DIRECTOR**

***EXECUTIVE COMMITTEE***

**Greg Weissman - President • Stuart Sweet - 1st Vice President • Joel Feinstein - 2nd Vice President**

**Dr. Susan Damron - Secretary • Kathy Rosenfeld - Treasurer • Stacy Knox - Financial Secretary**

**Members-At-Large: Steven Becker, Marv Reiter, Paul Zipperstein**

**Craig Beasley - Immediate Past President**

***DIRECTORS***

**Steven Becker • Harriet Briant • Jay Donenfeld • Harriet Herman • Sheri Maltzman**

**Margie Orland • Michael Reiter • Susan Shimoff • Julie Strain • Justin Swant • Scott Wilkie**

**Leslie Soltz - President, Sisterhood**

***Member of Union for Reform Judaism (URJ)***

**OFFICE HOURS - Monday-Thursday 9:00AM to 5:00 PM; Friday 9:00 AM-4:00 PM**

**THE BULLETIN - CONGREGATION EMANU EL**

**Published monthly by Congregation Emanu El, 1495 Ford Street, Redlands CA 92373.**

**POSTMASTER: Send address changes to Congregation Emanu El, 1495 Ford Street, Redlands CA 92373**