



THE BULLETIN

1495 FORD STREET · REDLANDS · CALIFORNIA · 92373 · (909) 307-0400



**Purim 5774: An Old
Favorite - The Pirate Purim!**



Sunday, March 16

Carnival begins at 10:00

Purim Shpiel begins at 10:30

**Carnival and lunch
resume at 11:30, ish**



**EVERYONE Receives
a Shalach Manot Box!**

Pick up your Shalach Manot Box at the Temple before services on Purim weekend or contact the Temple Office to arrange local delivery.



Sisterhood of
Congregation Emanu El
presents
Community Family Seder 2014

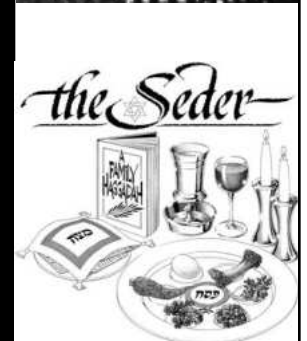
Tuesday, April 15
6:00 p.m.

Led by Cantor Jennifer Bern-Vogel
Catered by Bon Appetit!

\$45/adult
\$12/children 4-12, under 4 are free

Non-members:
\$60/adult \$25/children 4-12, under 4 are free

RSVP by April 2
**SEE BULLETIN FLIER FOR MORE DETAILS
AND RESERVATION FORM**



EREV SHABBAT SERVICES

March 7, 2014, 7:30 p.m.

Erev Shabbat Services. Volunteer Choir participates in Services. In Our Own Words Speaker is Gail Nachman. Oneg Shabbat following Services sponsored by Leslie & Dr. William Soltz and Barb & Judge Michael Smith in honor of the Soltz's Anniversary.

March 14, 2014, 6:45 p.m.

Erev Shabbat Services led by Greg Minton and students from the School for Jewish Living. BBQ potluck Shabbat Dinner at 6:00 p.m. precedes the Shabbat Service, see Bulletin flier.

March 21, 2014, 6:45 p.m.

Erev Shabbat Family Services led by Cantor Jennifer Bern-Vogel. In Our Own Words speaker is Ed Fischel. Snack & Shmooze precedes Services sponsored by Phyllis Sweet in honor of family birthdays: Francesca and Stuart Sweet, daughter Barbara Dirsra, son-in-law Peter Dirsra, and granddaughters Cassandra and Natasha Dirsra.

March 28, 2014, 6:30 p.m.

Erev Shabbat Services led by Cantor Jennifer Bern-Vogel. Snack & Shmooze preceding Services sponsored by Nancy & Dr. Dip Sidhu.

SHABBAT MORNING SERVICES

March 1, 2014, 10:00 a.m.

Torah Study Only—NO Shabbat Services—led by Jose Mendez as Rabbi Kohn is in Omaha as Scholar-in-Residence at Temple Israel, speaking on the themes of his books. Shabbat Pekudei, Exodus 38:21-40:38; Haftarah: I Kings 7:51-8:21. Kiddush following Shabbat Torah Study.

March 8, 2014, 10:00 a.m.

Shabbat Services. Shabbat VaYikra, Leviticus 1:1-5:26; Haftarah: Isaiah 43:21-44:23. Kiddush following Shabbat Services.

March 15, 2014, 10:00 a.m.

Shabbat Services led by Rabbi Emeritus Hillel Cohn. Shabbat Tzav/Zachor, Leviticus 6:1-8:36; Haftarah: Jeremiah 7:21-8:3, 9:22-23. Kiddush following Shabbat Services.

March 22, 2014, 10:00 a.m.

Torah Study Only--NO Shabbat Services--led by Rabbi Emeritus Hillel Cohn. Shabbat Shmini, Leviticus 9:1-11:47; Haftarah: II Samuel 6:1-7:17. Kiddush following Shabbat Torah Study.

March 29, 2014, 10:00 a.m.

Shabbat Services led by Rabbi Emeritus Hillel Cohn. Shabbat Tazria/HaChodesh, Leviticus 12:1-13:59; Haftarah: II Kings 4:42-5:19. Kiddush following Shabbat Services.

*"Snack & Shmooze" 6:00 p.m. prior to 6:30 p.m.
Erev Shabbat Services.
Shabbat Morning Services and Shabbat Torah Study
Saturday mornings at 10:00 a.m.*



Yahrzeits

The Yahrzeits of the following whose names are inscribed on the Wall of Perpetual Memorial will be observed in March:

March 7-8, 2014

Michael Stelzer
Norman Haydis
Randy Aronoff
Barry Rubinstein
Etta Halpern
Jack Becker
Selmar Anker
Irving Gimble
George Weinstein
Benjamin Stein
Lillian Rabenstock
Jack Greenwood
Albert Sanders
Frances Katzeff
Lynette Halevy
Bennet Meyers

March 14-15, 2014

Judith Harmon
Noel Novack
Helga Nadel
Charles Shamrock
Eleanor Young
Aaron Brill
Betty Ernstein
Philip Korengold
Albert Tilton
Ethel Margolis
Walter Reissman
Maurice Mertens
Harriet Mueller
Leonard Koren
Pearl Dvoskin
Herman Harris
Hilde Erlanger

Mollie Olenick
David Press
Coral Scherba

March 21-22, 2014

Elizabeth Starr
David Schlein
Mollie Lerner
Isabel Klein
Sally Unickel
Eugene Mink
Harold Cohen
Justice Marcus Kaufman
Hyman Weitzman

March 28-29, 2014

Goldye Budd
Herbert Feinberg

Lewis Meyers
Ben Wixen
Anna Fremland
Joseph Friedland
Nathan Drayer
Feodore Robbins
Oscar Eckstein
Bertha Chudacoff
Mary Newman
Sadie Helman
Rose Goodman
Sophie Joseph
Esther Eisenberg
Joseph Litsky
Morris Swedlove
Morris Davis
Jerome Sorkin
Stephen Stone



Note: Should you have a loved one whose name you also would like to have read from the bema, please call the Temple Office.



Awww, Why Not

Dear Friends,

It's nice to have a mid-winter—or early Spring—diversion from everything else in life.

Thank you to our ancient rabbis for planning the flow of the Jewish year, and putting the significant, thoughtful Holy Days in the Fall, when our minds are focused, and giving us the silly times of drinking schnapps at Purim and Passover in the Spring, when our minds are somewhat emptied and exhausted from everything else in the year.

And, thank you to Microsoft for inventing its Publisher program, which allows my beard to grow back, and to be dark black again.

So, in a couple weeks we will celebrate our celebratizing of Purim (to borrow an idiom from President George W. Bush), and we should all try to come somewhat silly and in some other appearance than our normal appearing (to borrow the same idiom). Perhaps, just perhaps, I'll have a dark beard, again.

What appearing will you be in on Purim?

Rabbi Douglas Kohn



Happy Adar Shen! (Adar II)

Allow me to use this space to thank EVERYONE who had a part in supporting, participating in, organizing, attending or even *wishing* they'd attended the Cantor's Concert, **From Bema to Broadway!** I'm grateful to my colleagues who came from near and far to share their special talents and especially, to our 'own' Shaina Knox and Naomi Swaresztejn – it was wonderful having the opportunity to bring so much diverse talent together. Thank you to our professional staff for your support and help: Rabbi Doug Kohn, Administrator Roberta Darrow, Office Assistant Nicole Smith, SJL Director Greg Minton, music teachers, Charlie Kramer and Michelle Zipperstein; as well as to our dedicated CEE choir members Michelle Anctil [and her classy clarinet!], Mary Lynn Doan, Grace Harris, Bernice Lipsky, Sheri Maltzman, George Petite, Barbara Smith, Lisa Wise-Wolk, Phil Wizer and Chel Zipperstein. We applaud all our wonderful kids from SJL and this year's soloists, Sydney Weissman and Hunter Verschell. Thanks to our crew behind the scenes, Mike Kress and Paul Zipperstein, Moms & Dads and Kid Wranglers. Kudos to our loyal, hard-working and talented Choir Director, Maestro Jerry Ripley, who with the help of the band, accompanied the huge variety of music from Bema to Broadway... How fortunate we are to have Stuart Sweet's creativity and generosity which brought us another fabulous poster design and program. But...without his mother, Phyllis Sweet, Stuart wouldn't be here to begin with and thanks to him living in Redlands, Phyllis has moved here as well ~ therefore

Continued on page 6



Dear Friends:

We've been through physically moving a couple of times, remodeling and even new construction so as a Congregation, we've proven that we're very resilient folks. Now, we are going through "remodeling" of a different type which involves changes to our clergy which not only affects their

availability and schedules but affects who might be helping us with life cycle emergencies, conducting services or teaching a class. I am hopeful that because of the values taught to us as Jews, we all will be patient with not only our clergy but with our staff, board members and volunteers who are doing their very best to bring us all the same religious observances, rituals, social functions and cultural events which we've come to expect at Congregation Emanu El. I only ask that if you have a concern or if a date or time doesn't seem to match up from one piece of communication to another, that you please call the Temple Office and let Nicole and me do our best to provide you with the correct information. And just remember, "You will catch more flies with honey than with vinegar."

Last Saturday night we thanked Our Bema to Broadway Concert Committee, clergy, musicians and staff for the effort which went into bringing us a soulful and spiritually uplifting concert. I'd also like to thank the many, many congregants who supported this effort with their attendance. We couldn't do it without you!

Roberta Darrow, Temple Administrator

From our Temple President



I hope you take advantage of the many activities and programs that are available to you at the Temple as well as the Jewish community at large. In recent weeks we have had a lecture on women's health from Dr. Lawrence Raphael and SJL led Shabbat Services. Most recently we were entertained by a fantastic Cantor's Concert, led by our own Cantor Jennifer Bern-Vogel, and listened to an excellent presentation by Dr. Charles Kimball during the Morrow-McCombs lecture series in San Bernardino. Coming up will be a Jewish Film Festival in Riverside as well as a very special Saturday Shabbat service in April at which we will honor the Jacob Rich family. This family helped establish a Jewish community in the San Bernardino area and presented our Congregation with a Torah that we continue to use for services.

By now you have received my letter outlining our direction over the next 16 months. I am sure you have questions and concerns and those of us on the Executive Committee and Board of Directors will do our best to answer and respond. Please speak to me in person, before or after services. You can also reach me at my Temple email address; president@emanuelsb.org. While I cannot share details regarding personnel matters, there are many other areas of concern that can be discussed. Feel free to communicate your concerns with any of the members of our Board of Directors as well.

Paul Zipperstein, Temple President

Welcome!

The Congregation welcomes the following new member family to our Congregational Community



Roberta and Sheldon Toll and grand daughter, Madison

May your affiliation with Congregation Emanu El be fulfilling and meaningful

Temple Beth El and the wider Jewish community presents:

Riverside Jewish Film Festival

March 9, 2014



Wall of Perpetual Memorial Dedication & Pre-Need Arrangements

**April 4, 2014
7:30 p.m.**

Twice a year new names are added to our Wall of Perpetual Memorial. The next dedication of names will be Friday, April 4, at 7:30 p.m. Another dedication will take place in the fall.

If you would like the name of your loved one placed on the Wall of Perpetual Memorial for the April dedication, contact the Temple Office by March 7.

You may also make pre-need arrangements for a location on the Wall. The contribution for inscription on the Wall is \$650 for members and \$1200 for non-members.

When a name is placed on the Wall of Perpetual Memorial it is included in each year's Book of Memory, is read aloud each year on the Shabbat closest to the Yahrzeit, and family members are notified of the impending Yahrzeit.

Contact Roberta Darrow, Temple Administrator, for more information.

In Our Own Words Speakers in March

On Friday, March 7, at 7:30 services, Gail Nachman will be our "In Our Own Words" Speaker.

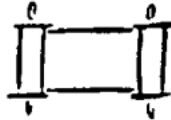
On Friday, March 21, at 6:30 Services, Ed Fischel will be our "In Our Own Words" Speaker.

Each lay speaker will address "What Community Means To Me." Plan to come to Temple to hear your fellow members.

Special Shabbat Honors

Saturday, April 5
10:00 a.m. Torah Service
Led by Rabbi Emeritus
Hillel Cohn

Honoring Lyman Rich Jr.
and the Rich Family



Lyman Rich is the grandson of Jacob Rich who brought our Torah over the mountains to San Bernardino by covered wagon. Hear his story!

In Memoriam

The Congregation notes with sorrow the recent death of ...

Elliott Satz
husband of **Phyllis Satz**
father of Bonnie Leventhal and Randy Satz
and grand father

Mazal Tov!

The Congregation extends a Mazal Tov to ...

Keiko and Jeff Weinstock
on the Bat Mitzvah of their daughter,
Anais Weinstock

**Jillian and Paul Snyder
Marla and Ron Drake**
on the birth of their son and grandson,
Judah Hadar Snyder



T.Y.G.E.R.

(Temple Youth Group of Emanu El, Redlands)
By Jessica Campbell



Once again TYGER has a TYGERiffic Purim Carnival planned for Sunday, March 16th beginning at 10:00 a.m. TYGER will be selling tickets for the games which are staffed by students and parents of each School for Jewish Living class. There will be game booths such as *Lollipop Toss*, *Bowling Game*, and *Beanbag Toss* plus other fun activities including a bounce house and face painting. Of course, it wouldn't be Purim without hamantaschen so we'll be selling those along with pizza and soda too. Everyone is welcome to come; young and old alike!!!!!! You don't have to be a kid to enjoy Purim, you just need to play like one!

School News



Greetings!

Well, this is certainly the most unusual winter the School for Jewish Living has ever experienced! There has been hardly any rain or snow, which is probably a good thing, since bad weather sometimes deters our students from attending school. Nonetheless, our attendance has improved greatly since the beginning of the school year and it is gratifying to see all of our students coming to Hebrew School and SJL. Thank you, parents, for seeing to it that your students attend regularly.

Our Family Shabbat service on Friday, February 21 and the Cantor's concert which followed the evening of Saturday, February 22 was a huge success. Many of our SJL students were in attendance at both and sang beautifully. A group of our students sang, "When We Believe," from the animated film, "The Prince of Egypt" at the concert and impressed our congregants greatly. Thank you to Cantor Jennifer Bern-Vogel, Jerry Ripley, our choir director, and Charlie Kramer, our song leader, who all did an amazing job to prepare the students for the concert.

As I write for this Bulletin, we are looking forward to our Purim Celebration which will be taking place the morning of Sunday, March 16. Both SJL and our TYGER youth group will be hosting the event and planning a fun-filled celebration for you and your children to enjoy. The Purim Shpiel will be held at the temple that morning with our carnival following. More news will be forthcoming in the SJL newsletter, so stay tuned!

Example isn't another way to teach, it is the only way to teach.
- Albert Einstein

Greg Minton

SJL Administrator
(909) 307-0400 ext. 105

EVERYONE is Invited to Attend Family Shabbat Services!!

- ◇ All the students in the School for Jewish Living will participate—not just one class or cluster.
- ◇ A school-wide **and** community-wide BBQ Shabbat dinner precedes Services at 6:00. See Flier!!!
- ◇ Fun, musical, engaging Services will start at 6:45, and conclude with a festive dessert/Oneg Shabbat at 7:30.

Erev Shabbat, Friday, March 14

6:00 Shabbat Dinner

6:45 Shabbat Service

MENTAL HEALTH AWARENESS IN ACTION

A social action project for our Emanu El Community called **Mental Health Awareness in Action** has been taking form over the last three months.

We are delighted to introduce you to the mission statement and to invite you to our next meeting.

Our mission is to raise awareness and reduce the stigma of mental illness. We put a face on mental illness through education and by telling the stories of those living with mental illness and their families. We advocate for lives of quality and respect. We strive to improve the lives of those who are affected in our community through advocacy, legislation, and social action.

Statistically, one in four adults experiences mental illness in a given year. Approximately 20 percent of youth ages 13 to 18 experience severe mental disorders in a given year. The Jewish community is in no way insulated from this phenomenon.

It is a sad fact of life that even in the 21st century, people still consider mental illness a shameful malady. Public awareness campaigns work to de-stigmatize mental illness, as the scientists increasingly understand its biochemical nature. And still the shame persists. Those with mental illnesses still tend to be blamed as somehow not doing enough themselves to get better. A staggering number of sufferers do not seek help or treatment.

We invite you to attend the next meeting of Mental Health Awareness in Action to be held on **Thursday, March 27 at 7 pm** in the CEE social hall. At this gathering, mental illness will be defined, the role of mental illness as a Jewish concern will be outlined and plans to immediately implement the mission statement will be addressed.

“No human is expendable. If one is slighted or excluded, the whole of society is unfit.” – based on Vayikra Rabbah Emor 30:12

With anticipation of satisfying work ahead, we are the founding committee members of Mental Health Awareness in Action,

Heidi Nimmo, Nancy Sidhu, Larry Mink, Barbara Smith, Jeff Spears, Ayala Mink, and Michael Smith



The Wonderful World of Sisterhood!



Hello Friends,
I feel so blessed! My kids are healthy (relatively speaking, colds notwithstanding) and I live in a country where I am free to do as I please. With these thoughts in mind I am excited about our plans for the an all-community Mitzvah Day on March 30th from 9:30-11:30. Along with the SJL students, we will be making tie blankets and homemade cards for the Childhood Cancer Foundation of Southern California, which will distribute the blankets and cards to children at Loma Linda University Medical Center. For this, I am requesting 2-yard pieces of cute fleece in prints or solids appropriate for children which we will fashion into NO SEW blankets. If you are able to buy a bolt, we will cut the fabric into 2-yard pieces. Or, if you prefer, write a check to Sisterhood (memo-tie blankets) and I'll buy the fleece supplies for you.

For the second part of our Mitzvah day I am thrilled that we will be adopting a soldier (who might be Jewish!) We will fill gift boxes on Mitzvah Day and I will then send at least one package (or more) a month for 6 months to our adopted soldier. You can help by either writing a check to Sisterhood (memo-soldier) or by bringing all kinds of goodies; food & homemade treats, toiletries, magazines, amusement, etc. Even BABY WIPES! Please do not include chocolate as it melts in shipment. We will be making homemade, loving cards to go inside the gift boxes too. I will keep you posted as to the confirmation of a Jewish soldier so that we may include a real feeling of "mishpucha."

Finally, did I mention food? Yes! We are also having a Bagel Schmooze during Mitzvah Day so that we can keep up our energy as we perform such wonderful mitzvot. PLEASE mark your calendars for Sunday March 30th to attend a wonderful day of community and Mitzvot. Let's give with our hearts.

Other fabulous events in March include Purim and our Schlach manot. Please fill out the order forms which have already been delivered to your homes. Our goal is to reach all our members with a gift!

Stacy Knox, Sisterhood President



*Strut your Stuff
At the Sisterhood
Talent Show*

Saturday, APRIL 26
7-9 p.m.

Contact Michele Zipperstein if you'd like to perform or help!

Mitzvah Day & Bagel Shmooze

Sunday, March 30
9:30 - 11:30

Everyone is invited to perform a Mitzvah Day project at temple along with our Sisterhood and School for Jewish Living families! Show your gratitude to our military troops by preparing care packages or help bring warmth and cuddles to children suffering from cancer by making tie blankets.

Bring 1 bolt or 2 yards of any color or print fleece for blankets if you'd like to contribute materials. See Bulletin flier for complete list of supplies needed. Program sponsored by Sisterhood and SJL. Contact Greg Minton or Stacy Knox for more information.

*You are invited to attend
a Sisterhood Brunch
at the temple*

Sunday, April 6
9:00 a.m. check-in

\$10/person

Guest Speaker - Pat Williams of Angel's Closet

Bring toiletries for donation to needy middle school and high school students. Bath and Body Works and Axe products are favorites! Please RSVP to the Temple Office at (909) 307-0400 by April 2.

Cantor Bern-Vogel, cont from page 3

we offer a final toast to this year's amazing Concert Chair, Phyllis Sweet and her Concert Committee: Rita Bramhall, Harriet Briant, Janice Guest, Nancy Sidhu, Leslie Soltz, Diane Stone, Stuart Sweet and Carolayne Swedlove, we thank you for the many, many hours of tireless and determined work to make this year's concert another great success.

Wishing everyone continued joy and celebration ~ Chag Sameach & Happy Purim!

Cantor Jennifer Bern-Vogel

Donations

HOME OF ETERNITY CEMETERY FUND

In observance of the Yahrzeits of...

Arnold Raynes by Elayne Raynes and Family, Sonia Sayson

Louis Press by Thelma Press and Family
In memory of...

Waldman and Cohen Families by Kathy Lindbergh Cohen

Jeanette and Max Kitay by Faye and Robert Baskett

TEMPLE FUND

In observance of the Yahrzeits of...

Lester Orland by Burton Orland

May Gainsboro by Gloria Cutler

David Sentob by Carl Mitchell

Marcia Kravitz by Cindy Brasington

Albert Sussman by Diane Stone

Harold Hanover by Marylou and Norman Hanover

Kay Prestidge by Shauna Van Horn

Rose Patrovsky by Caroldyne Swedlove

Stanley Cohen by Dorene and David Cohen

Marcelle Cohen by Carl Mitchell

Rachel Mitchell by Carl Mitchell

Helmar Schlein by Imry Tilton

In memory of...

Spec. John Pelman, US Army Green

Beret KIA in Afghanistan by Vickie and Steven Becker

Sgt. First Class Roberto Skelt, US Army Green Beret KIA in Afghanistan by Vickie and Steven Becker

Kenneth Irom by Gloria Cutler, Leslie and Dr. William Soltz, Dr. Gary H. Schwartz, Marilyn and Dr. Lawrence Raphael, Bonnie and Dr. Bernie Goler

Dr. Abram Hodes by Jacqueline Russler, Imry Tilton, Marilyn and Dr. Lawrence Raphael

Harriet Stein by Leslie and Dr. William Soltz, Dr. Gary H. Schwartz, Bonnie and Dr. Bernie Goler

Dr. Abraham Goldschlager by Harriet and Hal Herman

In honor of...

Bar Mitzvah of Benjamin Hiller by Marilyn and Dr. Lawrence Raphael

Birth of Judah Hadar Snyder by Sheri Maltzman

Birth of Jack Lewis Kaplan by Marilyn and Dr. Lawrence Raphael

SISTERHOOD PULPIT FLOWER FUND

In observance of the Yahrzeits of...

Evelyn Raphael by Marilyn and Dr. Lawrence Raphael

Rose Aronoff by Cherrie and Ronald Lubey

Natalie Gilbert by Cherrie and Ronald Lubey

Steven Lubey by Cherrie and Ronald Lubey

Anita Weissman by Donald Weissman

CAPITAL CAMPAIGN FUND

For the recovery of...

Rita Serlin by Joyce and Barry Eskin

CANTOR'S DISCRETIONARY FUND

In memory of...

Gigi Shapiro by Margene Upper

De Veaux

MORTON ARONOFF ENDOWMENT FUND

In memory of...

Dr. Abram Hodes by Cherrie and Ronald Lubey

Kenneth Irom by Cherrie and Ronald Lubey, Leona Aronoff-Sadacca and Joseph Sadacca

In honor of...

100th Birthday of Samuel Jarson by Cherrie and Ronald Lubey

90th Birthday of Joseph Sadacca by Cherrie and Ronald Lubey

Donations to the Congregation are Welcome Any Time

Honoring or remembering someone at the time of a life cycle event or Simcha is a long standing Jewish tradition.

The temple office staff promptly sends an acknowledgement card to the recipient of your donation.

To make a donation, download the Donation Form found on the temple website and send it with your check to the temple office. If you don't have a form, send us a note which includes your name and the person or persons whom you are remembering or honoring as well as the fund you wish to have credited with your donation. You can also make donations by emailing or telephoning the temple office, or by filling out a form in person at the temple office. We'll be happy to assist you!

Contributions Can Be Made To Any Of The Following Funds:

The Temple Fund for general and ongoing operating expenses. Make check out to the Temple.

The Sisterhood Pulpit Flower Fund and Bernice Berenbaum Kitchen Fund. Make check out to Sisterhood.

The Home of Eternity Cemetery Fund for cemetery maintenance. Make check out to Home of Eternity Cemetery.

The Rabbi's Discretionary Fund. Make check out to the Temple.

The Rabbi Hillel and Rita Cohn Campership Fund. Make check out to Sisterhood.

The Lionel Heller Music Fund which supports extra musical programming for the congregation. Make check out to the Temple.

The Mort Aronoff Endowment Fund. Make check out to the Temple.

The William Russler Memorial Archives Fund. Make check out to the Temple.

School For Jewish Living Fund. Make check out to the Temple.

Capital Campaign Fund. Make check out to the Temple.

Cantor Bern-Vogel Discretionary Fund. Make check out to the Temple.

Lease the Temple for Your Event

We invite you to book your special event at Congregation Emanu El's brand new, luxurious building which includes sweeping views of the San Bernardino Mountains from almost every space.



Contact the Temple Office for more information.

Gift Shop Hours

During SJL:

Sundays 9:30 - 11:30

Wednesdays 4:00 - 6:00

Or contact Phyllis Sweet for an appointment



THE BULLETIN
CONGREGATION EMANU EL
909-307-0400
WWW.EMANUELSB.ORG

Douglas Kohn
Hillel Cohn
Roberta Darrow
Jennifer Bern-Vogel
Gregory Minton
Jery Ripley
Nicole Smith
Jessica Campbell

Rabbi
Rabbi Emeritus
Temple Administrator
Cantor
SJL Administrator
Organist/Choir Director
Office Assistant
TYGER Advisor

Paul Zipperstein
Jeffrey Raynes
Craig Beasley
Sheri Maltzman
Michael Kress
Cheryl Sukenik
Julie Strain
Margie Orland
Jeff Spears
Stacy Knox

President
1st Vice President
2nd Vice President
Secretary
Treasurer
Financial Secretary
Immediate Past-President
Member At-Large
Member At-Large
Sisterhood President

OFFICE HOURS:

Monday—CLOSED

Tuesday—Thursday

9:30 AM - 5:00PM

Friday

9:30 AM - 4:00 PM

PERIODICAL POSTAGE PAID
SAN BERNARDINO, CA

**NOTE: Deadline for
Bulletin Articles is
the 5th of the Previous
Month.**

DIRECTORS

Steven Becker
Harriet Briant
Alvin Elman
Kurt Gottschalk
Debra Holder
Cherrie Luby

Nancy Sidhu
Diane Stone
Stuart Sweet
Donald Weissman
Dr. Mara Winick

THE BULLETIN - CONGREGATION EMANU EL (USPS 901-820) is published monthly by Congregation Emanu El, 1495 Ford Street, Redlands, CA 92373. Periodical postage paid at San Bernardino, CA. POSTMASTER: Send address changes to Congregation Emanu El, 1495 Ford Street, Redlands, CA 92373.

Antique Arcade : Kathy & Dan Trainor
Buy-Sell-Consign
Open daily 11-5, closed Sundays
(909) 794-5919
31629 Outer Hwy 10 South, Redlands

Owned & operated by the Lehmanns



Supplies and Gifts for pets... and their People

912 N New York St.
Suites B & C
Redlands, CA 92374
909-793-0898
fax 909-793-0636

www.pawsredlands.com



stuart sweet

graphic design • print consulting
web administration • technical writing

909.213.4862 • stuart@chescanet.com

Computer Pro2call
Complete System Management



Damon Needelman

(909) 525-4462
www.computerpro2call.com
damon@computerpro2call.com

Jerry Ripley **Harp**

Celtic ~ Classical ~ Contemporary

P.O. Box 1030
Wrightwood, CA 92397-1030
760-799-2954 (Voice & Text)
E-Mail: jerryripley@me.com

Keyboards
Lessons available

Hair By Judy in Redlands
Judy Howard Lister
Stylist, Barber, Colorist

