

What's Happening at Congregation Emanu El?

Sisterhood Casino Night - "A Night in Chinatown"



SHABBAT CELEBRATIONS



SHABBAT ALIVE / SHABBAT SHEKALIM

Friday - March 4, 2016 - Led by Rabbi Sherwood

Catered Dinner at 6:00 pm / "Shabbat Alive" Service at 7:00 pm

Oneg Shabbat following the service hosted by Renee and Mike Kress in honor of their son's birthday

Saturday - March 5, 2016 - Led by Rabbi Sherwood

Torah Study - 9:15 to 9:45 am - Shabbat Morning Service - 10:00 am

Parashat Vayak'hel - פרשת ויקהל

Exodus 35:1-38:20, 30:11-16 - Haftarah - II Kings 12:1-12:17

Kiddush Following the Service



60-MINUTE SHABBAT

Friday - March 11, 2016 - Led by Cantor Jennifer Bern-Vogel

"60-Minute Shabbat" Service at 7:00 pm

Oneg Shabbat following the service hosted by Cindy & Fred Gifford

(Rabbi Sherwood will observe Shabbat at camp with our temple youth)

Saturday - March 12, 2016 - Led by Cantor Jennifer Bern-Vogel

Torah Study - 9:15 to 9:45 am - Shabbat Morning Service - 10:00 am

Parashat Pekudei - פרשתפקודי

Exodus 38:28-40:38 - Haftarah - I Kings 57:51-8:21

Kiddush Following the Service



CHOIR SHABBAT / SHABBAT ZACHOR / TOT SHABBAT

Friday - March 18, 2016 - Led by Rabbi Jay Sherwood & Cantor Jennifer Bern-Vogel

Tot Shabbat 6:00pm - 6:30pm (please note special date this month)

Kabbalat Shabbat with the Congregation Emanu El Choir at 7:00pm

Oneg Shabbat following the service

Saturday - March 19, 2016 - Led by Rabbi Jay Sherwood & Cantor Jennifer Bern-Vogel

Torah Study - 9:15 to 9:45 am - Shabbat Morning Service - 10:00 am

Parashat Vayikra - פרשתויקרא

Leviticus 1:1-5:26, Deuteronomy 25:17-19 - Haftarah - I Samuel 15:2-15:34

Kiddush Following the Service



BEATLES SHABBAT

Friday - March 25, 2016 - 7:00 pm - Led by Rabbi Jay Sherwood & the Beatles Shabbat Band

Kabbalat Shabbat at 7:00pm

Oneg Shabbat following the service hosted by Samita & Damon Needleman in honor of their anniversary

Saturday - March 26, 2016 - Led by Rabbi Jay Sherwood

Torah Study - 9:15 to 9:45 am - Shabbat Morning Service - 10:00 am

Parashat Tzav - פרשתצו - Leviticus 6:1-8:36 - Haftarah - Jeremiah 7:21 - 8:3; 9:22 - 9:23

Kiddush Following the Service

SUMMER ISRAEL TRIP POSTPONED

JOIN US NEXT SUMMER FOR THE TRIP OF A LIFETIME!!

ISRAEL 2017 WITH RABBI JAY & LISA SHERWOOD

After much discussion with interested travelers, we have decided to postpone our Congregational Israel Trip to the Summer of 2017. This will give more people the opportunity to join us for this amazing journey. The new dates for the trip will be announced soon. In the mean time, start saving for your trip of a lifetime.



Rabbinic Reflection



The month of Adar is mentioned in the Talmud with the statement: *mi she'nikhnas Adar marbin b'simchah (Ta'anit: 29a)*: When one enters into the month of Adar, one should increase in happiness. What an empowering message! We

tend in our society to dwell on what is bad, and spend very little time on what is good. You don't believe me?!?! Just sit in front of your TV and turn to any news program. The holiday of Purim—the reason that Adar is a joyful month—brings this and other lessons to light. Purim is not a children's holiday, despite what you may have heard elsewhere. Purim is a holiday filled with worldly themes and important adult lessons. When we read the Megillah and celebrate its lessons, we become empowered by its words.

On Wednesday, March 23, we will boo Haman and the pure evil that he epitomizes. We will cheer Mordechai and Esther for their fearless rescue of the Jewish people. We will celebrate the joy of the triumph of good over evil—a lesson that is not lost on us in our generation. Certainly, there is male chauvinism and xenophobia in the Book of Esther, but we see that we can overcome them as we build a better world. In retelling the story of Queen Esther and company, we relive the miracle of Purim—that we survived despite the threat of annihilation. In recounting the defeat of Haman, we are reminded of the danger of leaving evil unchallenged. The Book of Esther is the only Book in the *Tanach* (Hebrew Bible) that does not mention God. God's face is hidden in the story (hence why we wear costumes), and we are compelled to focus on where else God may be hidden in our lives. Finally, the Talmudic dictate (increase happiness) reminds us to celebrate the simchas more than we dwell on the sadnesses. And of course, our inner child gets to play and be silly with our actual children! Happy Purim! Please join us for all of our Purim related events: May 20 – Purim Carnival / May 23 – Megillah Reading / May 25 – Beatles Shabbat / May 26 – Queen Esther's Persian Purim Ball.

Kol tuv,

Rabbi Jay Sherwood

Cantorial Comments



For the past twenty-five years, I have been privileged and blessed to be able to work with hundreds and hundreds of bar and bat mitzvah students as well as having prepared dozens of adult *B'nai Mitzvah* for their ceremonies. For every student of Torah, regardless what level

they are on, it is a spiritual journey in which their strengths and weaknesses are tested, with new challenges at every turn. Without exception, I have witnessed every individual experience personal and shared triumphs in their accomplishments. One of my earliest bat mitzvah students from Virginia is now a full-time pulpit rabbi and another one will likely begin her rabbinic studies within the next two years!

For mature adults who really want to learn and for whom it is no longer a required Jewish transition into adulthood, participants are filled with a thirst for knowledge and desire to attain a level of Jewish education and skill they never had the chance to pursue when they were younger. Women who were raised orthodox, for example, were never even given the choice of having a bat mitzvah ceremony. And for men and women who choose to become Jewish, later in life, the adult *B'nai Mitzvah* ceremony is a further affirmation of their faith and dedication to learning. In our own congregation, several of these women now chant Torah and Haftarah every year at the High Holy Days!

For young adults who are juggling not only the demands of schoolwork and extracurricular activities, but also the disruption of developing bodies and hormones, becoming a *bar* or *bat mitzvah* involves a tremendous amount of time and dedication [and usually at least one nagging parent in the background] before they reach their special day.

At my former congregation in Virginia, to assure that we would have our son's exact birthday *parashah*, the administrator agreed to let us to reserve the date on the calendar – when Sam was only two years old! That was nearly eleven years ago. For the past seven months, my long-awaited dream is becoming realized with the special privilege, together with Ira, of preparing Sam for his upcoming bar mitzvah. It will be in Los Angeles, where all his school classmates can join him, but at some point in the coming weeks, our family will host an Oneg [or Kiddush] - date TBD - at Congregation Emanu El in Redlands in honor of Sam becoming a bar mitzvah. We hope you will join us at that time!

B'simcha,

Cantor Jennifer Bern-Vogel

Presidential Perspectives



Soon it will be Purim, then spring and shortly thereafter Pesach. It is a busy time of the year to be sure. Your temple leadership gets very busy in this season as well. Atop our list of priorities is preparing the budget for the 2016/17 fiscal year. As we expend what remains of the capital campaign money to supplement our mortgage payments, we are faced with making our next budget work on dues (annual dues and the Mortgage Reduction Fund) and fundraising exclusively. While we have had one round of expenditure reductions, if the budget does not balance we will look to find additional reductions in services that can be made to reduce spending. Your leadership takes its fiduciary responsibilities very seriously and will act to keep our synagogue solvent. Our treasurer Stuart Sweet has some interesting details in his bulletin letter and I encourage you to read it.

Last Friday night we experienced our first 60 Minute Sabbath service. I am thrilled to report Shabbat service ran precisely one hour and received positive reviews from the 50 congregants attending. We were also treated to the most interesting version of Adon Olam I have experienced. The 60 Minute Shabbat will occur on the second Friday night of the month going forward and I look forward to seeing you there.

Congratulations are in order for Sisterhood and their wildly successful Mah Jongg tournament. The event attracted 80 participants (their largest crowd to date) and was a very successful fund raiser. As always, Sisterhood is a remarkable group and continues to provide wonderful programming for the congregation.

Please note and make plans to attend these March events. On March 13 at 9:30 AM we have Sisterhood's "Trash or Treasure" brunch. Your \$10.00 admission entitles you to a delicious meal and the appraisal of one item. Kathy Trainor and Jimmi Mitchell will conduct the event.

Sunday March 20 is our Purim Carnival. This year's version will be expanded with more food offerings, more games for the children and performances by Symphonie Jeunesse and E3: Encore, Expressions and Entourage from Valverde School of Performing Arts. Come and enjoy the shows and mingle while the kids cavort.

L'Hitraot,

Craig Beasley

Sisterhood Speaks



This past month Sisterhood was busier than ever and had several very special events. On February 15 we had our annual Mah Jong Tournament which proved fun for all! Many thanks go to Carole Wizer and Paula Kaye for all their hard work, dedication and organization that made the event such a success. Also, appreciation goes to all the individuals who helped bake, clean up, set up, and donated all the wonderful items for the gift baskets. We also held our Sisterhood Shabbat on February 26. I would like to personally thank all of those who helped put together such a lovely service. Our Shabbat service would not have been possible without the talents, time, efforts and guidance of many- including both Rabbi Sherwood and Cantor Bern Vogel. This month our "Trash or Treasure?" brunch is finally here and our very own Kathy Trainor will be presenting. The brunch is March 13 and begins at 9:30 a.m. at the Temple. Please make sure to RSVP as soon as possible if you have not already. Also, we will be starting Hamantaschen baking as well as filling our Shalach Manot bags. Please contact Leslie Soltz if you are able to help with either baking or filling bags. She has several dates selected!

I am very excited to announce that on April 16 we are planning a Women's Retreat Day which is being expertly arranged by Reva Bloom. The day will begin with morning services, include a lunch, a fabulous presenter in the area of art as well as a Havdalah. Please look for upcoming announcements for further details.

Our next Sisterhood Board meeting will be March 6 at 10:00 a.m. and all are welcome to attend.

Shalom,

Francesca Sweet

Temple Board of Directors Meeting

Thursday - March 17, 2016 7:00pm

Members of the congregation are always welcome to attend the meetings of the Board and to participate in its deliberations

Treasurer's Report



My friends,

The theme of this month's report is "The Gathering Storm." As we look out over the horizon, the days of easy money are behind us and we've already made a round of cuts which, while helpful, won't do enough to right our financial ship by themselves.

I fear my reports for the next several months will look increasingly dire and I want to apologize in advance and thank you for sticking with me.

By the numbers: Income of \$40,000 last month was down 28% from the previous month. Mortgage Retirement fund income of \$6,000 was only enough to cover 42% of the mortgage. SJL tuition was under \$1,000 and year to date we have collected just over 50% of the money we expected to by this point from SJL tuition payments. There were no fundraising events in January.

Our expenses in total were \$49,000 including paying the mortgage so we backfilled using funds from the Capital Campaign to cover our mortgage obligations. That fund, recently invigorated by \$133,000 from the Brin estate's final contribution, is dipping lower every month.

Every single one of you manages a household budget and knows that you can't last long when you're only making 80% of the money you need to put a roof over your head and food on the table. We've planned ahead, because we know this time of year is lean. We squirrel away all we can during the flush times. There's no doubt that we will continue to be healthy throughout fiscal 2016 and we will end the year with a little cash in our checking accounts. And then, we start all over again with fiscal 2017.

Friends, I hope you'll help me out. I know the people who read this column aren't the problem. You're the solution – the helpful ones who volunteer time and money whenever asked. I'm asking each one of you to share this information with your friends and other temple members. Let's talk about this now while we can – in fiscal 2017 we need to find a way to reconcile an \$80,000 difference between income and expenses without dipping into savings. Let's all work together now to make that happen.

I hope all of you know that you can email me at stuart@chescanet.com or call me at the number in the Sisterhood book. I am open to any new ideas for permanently balancing the books, and I love to hear from you.

Peace, Stuart Sweet



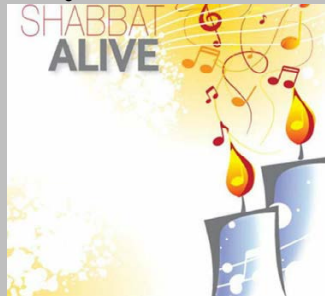
Parents,

as you begin to think about summer plans for your children, please consider sending them to a Jewish camp. Study after study has shown that one of the most important experiences in establishing Jewish identity is going to a Jewish Summer Camp. Campers experience Judaism twenty-four/seven - a difficult proposition in the Inland Empire. The memories and experiences our youngsters come home with are indescribable. Campers return from a Jewish summer camp with stories of how they spent Shabbat, activities that challenged them both intellectually, spiritually and physically; and, most importantly, they will forge new, life-long friendships.

Later this month, we will announce dates that Camp Mountain Chai and URJ Camp Newman will visit us for presentations about summer camp. To qualify for a scholarship, you may attend one of these camps, or one of the other area Jewish camps, including: Camp Hess Kramer, Gindling Hilltop Camp, Camp JCA Shalom, Camp Ramah, Camp Alonim - or any other Jewish residential camp. The Sisterhood of Congregation Emanu El oversees the **Rabbi Hillel and Rita Cohn Campership Fund**.

Funds have been set aside to assist Congregation Emanu El families with sending their children to camp. Campership Applications are available at the Temple Office or you may contact Leone Hyman. Camperships are also available from the **One Happy Camper Foundation** through the various camp offices. Please contact Rabbi Sherwood for information about this campership or any other information about Jewish Summer Camps.

Shabbat Alive Dinner & Service Friday, March 4, 2016



Shabbat Alive is a community dinner followed by a participatory, musical Shabbat service in the round.

Dinner is \$10/person, but children under 10 years old pay their age. The cost at the door is \$13.00 if food is available. Please make your payment at the temple office. This month's menu: Italian, catered by Il Volo (Pasta Arrabiata, Cheese & Spinach Ravioli, Insalata Mista, and bread with butter)

Dinner begins at 6:00pm
Shabbat service begins at 7:00pm

RSVP at

<https://www.eventbrite.com/e/shabbat-alive-march-2016-tickets-19733327915>

Dipping Your Toes in the Sea of Talmud



A NEW ADULT EDUCATION CLASS with Rabbi Jay Sherwood

The rabbis of old said the Talmud is so vast, that reading it is like swimming in the sea. What is the Talmud? How is it studied, what does it contain, and who are the rabbis that are quoted? Why is it relevant to me as a modern American Jew?

THIS IS A THREE PART CLASS
TUESDAYS, FEBRUARY 23,
MARCH 1 & MARCH 8
From 7:00 to 8:30 pm

JOIN US FOR



On the 2nd Friday of each month
join us for an Erev Shabbat experience
for children in Pre-K through 1st grade
(but all are welcome to join in!)

Join Rabbi Jay Sherwood for
a 30-minute service
with music, stories and a Hershey's kiss
to welcome the sweet Shabbat

Upcoming Dates
March 18 - 6:00pm-6:30pm
(note special date for March!!)
April 8 - 6:00pm-6:30pm



Congregation Emanu El is in need of
the following items and services:

Permanent Outdoor Signage
Couch for Rabbi's Office

or you can sponsor a month of:
Gardening, Maintenance, Electricity
or Janitorial Services

Contact the temple office if you are interested in
donating one of these items.

Thank you!

Thank you for the following donations:
Marv & Elaina Reiter - table/chairs for Rabbi's office
Stuart & Francesca Sweet- video projector

Mental Health Awareness



Let's do something caring for Mental Health Awareness Month! May 2016.

E-Motion

You might think that means 'electronic motion,' but no, it's a play on the heart-felt word 'emotion.' It hints at how we can change our emotions from those that drag us down to those that enable us to enjoy life fully. In January, at the Christian Counseling Service here in Redlands, counselor and Reverend William Roozeboom gave a talk on trauma, negativity and neuroplasticity. The happy word in that topic is neuroplasticity. He explained that we are prone by our biology to focus on the bad experiences of life and, equally, to let the good ones slip out of our consciousness. I suppose it protected us once from dangerous situations, like encounters with saber tooth cats and the like. And today, I imagine most of us know how easy it is to get entangled in ruminations on troubles and fears. That seems to be our evolutionary legacy. But the discovery of neuroplasticity shows us that we can change not just our fleeting thoughts, but also the very structure and functioning of our brains. We can make them more positive and more prone to see and remember good life experiences. And here comes the surprising part of it all – and where the e-motion comes in. One of the best ways to create a happier life is through movement. Through the body, a bottom-up way of happiness. First, listen to your body and its wisdom. Next, nourish it with healthy food and rest, as you nourish your intellect with great thoughts, and as you nourish your emotional being with warm contact with people. And then, move. Engage in physical activity, get your blood circulating, ramp up that heart, and then in a controlled way bring it down to rest. Be aware, be mindful. Take a walk with someone you care for. Talk together side by side as you watch the world. And know that your brain is busy re-organizing itself to bring you a satisfying life. Nancy N. Sidhu, Co-chair, Mental Health Awareness In Action

Nancy Sidhu & Heidi Nimmo

Co-chairs Mental Health Awareness in Action

In Memoriam

זכרונם לברכה

The congregation notes with profound sorrow the recent death of:

Betty Kress

She is survived by her son Mike (Renee) Kress,

Sheldon Swedlove

He is survived by his wife Adrienne; sons Joel (Stephanie) Swedlove and Andy Swedlove; mother Carolayne Swedlove, and brothers Randall (Karen) Swedlove and David (Jeanette) Swedlove; and his grandson Ethan Swedlove

May the memories of the righteous be for a blessing!

Mazal Tov

מזל טוב

To Samuel Vogel and to
Cantor Jennifer Bern-Vogel and Ira Vogel
on the occasion of the Sam's Bar Mitzvah.

Sam's Bar Mitzvah will take place at
Temple Beth Am in Los Angeles, CA
on Saturday, March 26, 2016

Hamantaschen Baking



Bakings sessions will take place:

Sunday, March 6, from 9:00am - 12:00noon
Sunday, March 13, from 12:00noon - 3:00pm
Wednesday, March 16, 3:30pm - 12:00pm

Please join us in the Temple Kitchen to bake
these treats for our Purim celebrations!!

Join us for an exciting

FULL WEEK OF PURIM CELEBRATIONS

Purim Carnival
Sunday, March 20, 2016
11:00am-1:00pm



Bounce House!! Giant Joust!!

**BBQ Hamburgers & Hot Dogs
& Hamantaschen**

Live Entertainment:

**Symphonie Jeunesse
(youth symphony)
and**

**E3: Entourage, Expressions & Encore
(youth song & dance troupe)**

**Dunk Tank
(Dunk the Rabbi if you dare!!!)**

and much more!!

Beatles Shabbat
Friday, March 25, 2016
7:00pm



**The Talmud says: "When Adar
arrives, happiness increases"**

**To increase our happiness in Adar, join us for a
special Shabbat service where we sing the
entire service to the music of The Beatles
featuring the Beatles Shabbat Band**

Megillah Reading
Wednesday, March 23, 2016
6:00pm Dinner - 7:00pm Megillah



Come in costume

***Dinner of orecchiette pasta will be
served at 6:00pm***

***Dinner is free for those in costume
and \$5.00/ all others***

Megillah reading will begin at 7:00pm

Hamantaschen & Drinks

RSVP for dinner at:

<https://www.eventbrite.com/e/purim-megillah-reading-and-dinner-tickets-22464769731>

**Queen Esther's Persian
Purim Ball**
Saturday, March 26, 2016
6:00pm - ??



**Travel to the Persia and enter the Persian
palace as Queen Esther invites you for an
evening celebration of the Scroll of Esther.
Our evening features a catered Persian
dinner, belly dancers, adult costume contest,
children's costume contest, 10-minute
megillah and more! See the next page of the
bulletin for details.**



SATURDAY NIGHT, MARCH 26, 2016
6:00pm - ??

You are invited to Queen Esther's Persian Purim Ball
at the Persian Palace in Shushan
(on all other days, we call it the Social Hall)

Your evening includes:

- **Catered Persian Dinner w/ Wine & Sodas**
- **Belly Dancing Show**
- **Adult Costume Contest w/ Prizes**
- **Children's Costume Contest w/ Prizes**
- **10-Minute Megillah**
- and more!**

\$25.00/members - \$35.00 / non-members
Pre-B'nai Mitzvah children pay their age

RSVP:

<https://www.eventbrite.com/e/queen-esthers-persian-purim-ball-tickets-22466176940>
or to the temple office

You are invited to join in a festive celebration of Passover at the

2nd Night of Passover

Community Seder

Saturday - April 23, 2016 - 6:00 pm

sponsored by

Sisterhood of Congregation Emanu El



Rabbi Jay Sherwood will lead the Seder that will include the traditional elements along with sing-a-long music, interesting learning, with some fun surprises as well.

Enjoy a homemade Seder meal prepared by members of our Sisterhood, complete with all of the traditional foods

(including vegetarian main-course option).

Wine is provided.

Members pricing:

Adults - \$40.00 - Children 4-12 - \$12.00

Children under 4 - Free

Non-Member pricing:

Adults - \$50.00 - Children 4-12 - \$20.00

Children under 4 - Free

Make reservations by no later than April 13, 2016 by calling the office or at:

<https://www.eventbrite.com/e/2nd-night-of-passover-community-seder-tickets-22457700587>

Those wishing to be seated together (tables accommodate 8 people) are requested to make their reservations together.

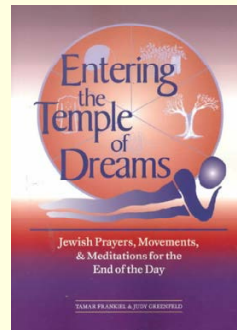
30th Annual Rabbi Norman F. Feldheim Memorial Lecture

Tuesday - April 5, 2016

7:00 pm

at Congregation Emanu El

Dr. Tamar Frankiel
will present a lecture on
“Entering the Temple of Dreams”



Dr. Tamar Frankiel is the Provost of the Academy for Jewish Religion, California, where she has been a member of the faculty since 2002. Dr. Frankiel served as the president of the Academy from Jan. 2013 - Dec. 2015, making her the first Orthodox woman to head a rabbinical school in the United States.

Dr. Frankiel earned her PhD in History of Religions the University of Chicago. She has taught at Claremont School of Theology, Stanford, Princeton, UC Berkeley and UC Riverside. She is the author of numerous books, including *The Gift of Kabbalah; The Voice of Sarah; California's Spiritual Frontiers;* and *Entering the Temple of Dreams.*

Rabbi Norman F. Feldheim was the leader of our congregation from 1937-1971 and our Rabbi Emeritus from 1971 until his death in 1985, when the Rabbi Norman F. Feldheim Memorial Lecture Fund was established in order to bring programs to our congregation, annually at the time of his Yahrzeit, on subjects that were especially dear to Rabbi Feldheim.

**This lecture is open to the public.
Admission is free.**

Join us for a

Sisterhood Women's Retreat

"Coloring Outside The Lines"

**Join in a day of morning services,
lunch, an engaging presentation and
finish the day with Havdalah!**

April 16, 2016

starting at 10:00am

\$18 covers lunch (bring your own snacks)

*Reserve now at the temple office
or call (909) 307-0400*

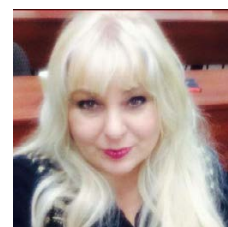


Marylou Falstreau is an artist and workshop leader, as well as, the creator of the "Women and the Hourglass" series. There are now 49 images available in Cards, Prints, Affirmation Card Decks, Magnets and most currently, a Coloring Book.



Marylou Falstreau

Dr. Covington began her career as an Assistant Professor and Staff Psychologist at Loma Linda University Medical Center (LLUMC), Department of Anesthesia after completing her doctoral degree. During her tenure at LLUMC, she began integrating psychological concepts with a diversity of chronic pain conditions and life threatening illnesses. This included the creation of Transitions, a clinical support group specific to young adults challenged by severe health conditions such as cancer.



Dr. Tracy J. Covington

Sisterhood's

"TRASH OR TREASURE?" BRUNCH

with Kathy Trainor and Jimmi Mitchell

**March 13, 2016 • 9:30am
at Congregation Emanu El**

Admission \$10 includes appraisal of one item

RSVP to the temple office

at cee@emanuelsb.org or call 909.307.0400

*Our member, Kathy Trainor, owner of Antique Arcade, Redlands
and Jimmi Mitchell of Octavia's Scrapbook will conduct the appraisals*



Personal property appraisals should be considered as entertainment and may not be valid for insurance purposes.



CONGREGATION EMANU EL

SCRIP ORDER FORM

(Most popular retailers are listed below – BUT there are many more available!)

Go to: www.shopwithscrip.com for a complete list of all available Scrip retailers

RETAILER - % to congregation		VALUE	NO.	\$ Amount
Albertson's	4%	\$25		
Albertson's	4%	\$100		
Amazon	3%	\$25		
Applebee's	8%	\$25		
Arco	1.5%	\$50		
Barnes & Noble	9%	\$10		
Barnes & Noble	9%	\$25		
Bed Bath & Beyond	7%	\$25		
Burger King	4%	\$10		
Carl's Jr.	5%	\$10		
Chevron	1.5%	\$50		
Chili's/Mac Grill	11%	\$25		
Chipotle	10%	\$10		
Claim Jumper	9%	\$25		
Coffee Bean & Tea	9%	\$50		
CVS	6%	\$25		
CVS	6%	\$100		
Del Taco	4%	\$10		
El Pollo Loco	6%	\$10		
Home Depot	4%	\$25		
Home Depot	4%	\$100		
HomeGoods	7%	\$25		
I tunes	5%	\$15		
Jack in the Box	4%	\$10		
Kohl's	4%	\$25		
Kohl's	4%	\$100		

RETAILER - % to congregation		VALUE	NO.	\$ Amount
Krikorian	6%	\$8.00		
Lowe's	4%	\$25		
Lowe's	4%	\$100		
Mimi's	8%	\$25		
Olive Garden	9%	\$25		
Panera	9%	\$10		
Panera	9%	\$25		
Paws	10%	\$50		
Red Robin	9%	\$25		
Shell	2.5%	\$50		
Smart & Final	3%	\$25		
Smart & Final	3%	\$50		
Starbucks	7%	\$10		
Starbucks	7%	\$25		
Stater's	6%	\$25		
Stater's	6%	\$50		
Stater's	6%	\$100		
Stater's	6%	\$250		
Subway	6%	\$10		
Target	2.5%	\$100		
Target	2.5%	\$25		
Von's	4%	\$25		
Von's	4%	\$100		
Wal-Mart/Sam's	2.5%	\$25		
Wal-Mart/Sam's	2.5%	\$100		
Wendy's	4%	\$10		

ADDED RETAILER	VALUE	NO.	\$ Amount

ADDED RETAILER	VALUE	NO.	\$ Amount

NAME	PAID	CHECK NO.	CASH	ORDER TOTAL
ORDER FILLED BY	ORDER RECEIVED BY			DATE DELIVERED

Make checks payable to: Congregation Emanu El

Scrip is available in the Congregation Emanu El office during normal office hours

E-mail us at scrip@emanuelsb.org to order or get more information about the scrip program

We will gladly order scrip for you!

If needed, we can arrange delivery, too!

Happy Birthday!!!

יום הולדת שמח

We rejoice with those whose birthdays occur in March and wish them a *Mazal Tov*:

1-Mar Rita Bramhall
2-Mar Tobias Brooks (9 years old)
2-Mar Marvin Reiter
2-Mar Donna Spears
3-Mar Kyle Hyman
4-Mar Rhys Beutler (11 years old)
5-Mar Lori Fenster
6-Mar Devin Cohen
6-Mar Barry Eskin
11-Mar Fariborz Lalezarzadeh
11-Mar Elaina Reiter
12-Mar Jackson Kartun Shiell
15-Mar Reva Bloom
15-Mar Lisa Sherwood
16-Mar Howard Leidner
16-Mar Samuel Vogel (13 years old)
17-Mar Delores Eirew
17-Mar Alyssa Wolk

19-Mar Jillian Snyder
20-Mar Susan Stillerman
21-Mar Sheila Barrad
21-Mar Burt Orland
22-Mar Mark Feltenberger
22-Mar Nancy Justice
22-Mar Jeffrey Spears
23-Mar Orville Spears
23-Mar Jeffrey Verschell
24-Mar Michele Zipperstein
26-Mar Gabe Freimuth (3 years old)
27-Mar Jessica Aceves
27-Mar Philip Stillerman
28-Mar Sara Rubin
29-Mar Patricia Kriso
30-Mar David Cohn
30-Mar Isabel Lehmann (12 years old)
31-Mar Yohannes Amare

Happy Anniversary

מזל טוב!

We congratulate and extend a Mazal Tov to the following whose wedding anniversaries occur in the month of March:

3-Mar Paree & Roger Getzoff
7-Mar Leslie & William Soltz
8-Mar Janice & Alvin Ellman
14-Mar Lillian & Jim Gaunt
14-Mar Katherine & Michael Paisner
18-Mar Kathy & Loren Harris
21-Mar Karen & Robin Uffer
21-Mar Michele & Bruce Ferguson
21-Mar Cindy & Michael Douglas
23-Mar Anthony & Tamara Sousa
24-Mar Dolores & Jack Linet
24-Mar Michele & Paul Zipperstein
24-Mar Scott & Ashleigh Wilkie
25-Mar Brenda & Mark Feltenberger
27-Mar Samita & Damon Needelman
29-Mar Philip & Susan Stillerman

Yahrzeits

The following Yahrzeits will be observed during the month of February: Those with a (★) are inscribed on the Wall of Perpetual Memorial:

March 4-5	March 11-12	March 18-19	March 25-26
★Isidore Abramson ★Selmar Anker ★Randy Aronoff ★Jack Becker ★Jacob Blaiss ★Jewel Braman Isadore Charson ★David Drumlevitz ★Pauline Eckstein ★May Gainsboro ★Jacob Gallin Rachel Gershon ★Lea Gilad ★Gilbert Gilbert ★Irving Gimble George Groupp ★Etta Halpern ★Jack Harris ★Norman Haydis ★Minnie Helfman Marvin Herschberg ★Emanuel Jacobson Max Kitay Max Koren Henry Lerner Rose Leviant ★Annette Meyer Rachel Minas ★Alex Novack ★Louis Press ★Jean Richmond ★Barry Rubinstein Maria Sandoval ★Frances Shapiro David Siperstein ★Alfred Slabodkin Jacob Sosnowitz ★Leon Sperber ★Michael Stelzer ★Isaac Vitsky ★George Weinstein Selma Wishnatzki	Ricki Andrews ★Aaron Brill ★Fred Cammack Samuel Eckhaus ★Jack Greenwood ★Lynette Halevy Harvey Hosmann Ernest Ischi ★Frances Katzeff ★Bennet Meyers ★Helga Nadel ★Noel Novack Sylvia Novack Henry Printz ★Lillian Rabenstock Charles Rudnick ★Albert Sanders Leah Satz H. Leonard Schlesinger ★Charles Shamrock Rose Simcoe ★Eleanor Young	Greg Comer ★Pearl Dvoskin Ellen Ebert ★Betty Erinstein Harvey Fannin Marcella Geisler ★Judith Harmon ★Herman Harris ★Isabel Klein ★Leonard Koren ★Ethel Margolis ★Maurice Mertens ★Eugene Mink ★Harriet Mueller ★Mollie Olenick Charles Picker ★David Press ★Walter Reissman Samuel Rosenbaum ★Coral Scherba ★David Schlein Daniel Silver ★Benjamin Stein Beverly Steinhorn ★Albert Tilton	★Goldye Budd ★Harold Cohen Estelle Davidson ★Nathan Drayer ★Hilde Erlanger ★Herbert Feinberg Clyde Geisler Irving Gendler Harry Gerber Simon Getzoff Barry Goldfarb ★Rose Goodman ★Justice Marcus Kaufman ★Philip Korengold William Lamb ★Mollie Lerner Esther Lerner Phillip Liebman ★Lewis Meyers Sam Millman David Novack Sam Pressman Rachel Reichert ★Feodore Robbins Hani Schon ★Elizabeth Starr Lillian Stillerman ★Sally Unickel ★Hyman Weitzman ★Ben Wixen

We Gratefully Acknowledge

We gratefully acknowledge these contributions to our various temple funds:

HOME OF ETERNITY CEMETERY FUND

In memory of ...

Esther and Leonard Weitzman by Terri Joslin and family

Esther and Leonard Weitzman by Marc Weitzman and family

Esther Weitzman by Sunny Rabenstock

Esther Weitzman by Evelyn Brown

Esther Weitzman by Dorothy Chenes

Esther Weitzman by Erika Harris

Esther Weitzman by Gerry Schwartz

Esther Weitzman by Coby Hinkle

Esther Weitzman by DeDe Allen

Esther Weitzman by Shelley Arons

Esther Weitzman by Gloria Cutler

Esther Weitzman by Shelley Silver

In-observance of the Yahrzeits of ...

Marcia Kravitz by Cindy Brasington

Aaron Brill by Shelley & Barry Silver

Robert Brill by Shelley & Barry Silver

TEMPLE FUND

In observance of the Yahrzeits of...

Leonard Berry by Mildred Hodes

Erma Haydis by Robert Gross

Eve Charlick by Judith and Bud Charlick

Rebecca Solter by Vickie and Steven Becker

Harold Hanover by Marsha and George Hanover

Yetta Picker by Phyllis and Harvey Persh

Joseph Persh by Phyllis and Harvey Persh

Dr. Elliot B. Slutsky by Bonnie Konowitch

Evelyn Raphael by Marilyn and Lawrence Raphael

Sam Fredason by Marilyn and Lawrence Raphael

David Sentob by Carl Mitchell

Rachel Sentob Mitchell by Carl Mitchell

Albert Sussman by Diane Stone

Stephen Stone by Diane Stone

Ellen Herschberg by Holder family

Lester Orland by Burton Orland

Jack Tancos by Margie Orland

Margaret Tancos by Margie Orland

Edith Pasman by Shirley Pyrtle

Elliott Satz by Phyllis Satz

Arnold Raynes by Jeffrey Raynes

May Gainsboro by Gloria Cutler

In memory of...

Nathan Gainsboro by Bertha Fox

Betty Kress by Sheri Maltzman

Betty Kress by Ethal McAfee

Betty Kress by Leslie and William Soltz

Betty Kress by Vickie and Steven Becker

Betty Kress by Margie Orland

Bernice Lipsky by Margie Orland

Bernice Lipsky by Ethal McAfee

Esther Weitzman by Leslie and William Soltz

In honor of...

Marriage of **Bonnie Konowitch and Richard Simon** by

Leslie and William Soltz

RABBI'S DISCRETIONARY FUND

In appreciation of ...

Rabbi Jay Sherwood by Marc Weitzman and family

Rabbi Jay Sherwood by Terri Joslin and family

Rabbi Hillel Cohn by Marc Weitzman and family

Rabbi Hillel Cohn by Terri Joslin and family

In memory of...

Bernice Lipsky by Michelle Anctil and Judith Smith

CANTOR'S DISCRETIONARY FUND

In memory of...

Bernice Lipsky by Leslie and William Soltz

Bernice Lipsky by Michelle Anctil and Judith Smith

MORTGAGE REDUCTION FUND

In memory of...

Esther Weitzman by Joyce and Barry Eskin

Bernice Lipsky by Michelle Anctil and Judith Smith

Betty Kress by Michelle Anctil and Judith Smith

Betty Kress by Leone and Bradley Hyman

For the recovery of ...

Judy Handleman by Joyce and Barry Eskin

SISTERHOOD PULPIT FLOWER FUND

In observance of the Yahrzeits of...

Morris Williky by Janice Guest

Rose Gilbert Aronoff by Cherrie and Ronald Lubey

Natalie Gilbert by Cherrie and Ronald Lubey

Steve Lubey by Cherrie and Ronald Lubey

Jack Tancos by Margie Orland

Margaret Tancos by Margie Orland

On occasions of joy or sorrow
a contribution to one of our temple
funds is always appropriate.

Contribution can be made to the
following funds:

Home of Eternity Cemetery Fund

Temple Fund

Rabbi's Discretionary Fund

Cantor's Discretionary Fund

William Russler Memorial Archives Fund

Mortgage Reduction Fund

Sisterhood Pulpit Flower Fund

Rabbi Hillel & Rita Cohn Campership Fund

Lionel Heller Music Fund

Bernice Berenbaum Kitchen Fund

Morton Aronoff Endowment Fund



1495 Ford Street - Redlands CA 92373

(909)307-0400

www.emanuelsb.org email:cee@emanuelsb.org

JAY SHERWOOD - RABBI - (909) 307-0400 ext 102 - rabbijaysherwood@emanuelsb.org

JENNIFER BERN-VOGEL - CANTOR - (909) 307-0400 ext 103 - cantorjenbv@gmail.com

HILLEL COHN - RABBI EMERITUS - rabbihcohn1@cs.com

JUDY FILSINGER - ADMINISTRATOR - (909) 307-0400 ext 104 - templeadmin@emanuelsb.org

JERRY RIPLEY - ORGANIST/CHOIR DIRECTOR

JESSICA ACEVES - YOUTH GROUP ADVISOR

EXECUTIVE COMMITTEE

Craig Beasley - President • Cheryl Sukenik - 1st Vice President • Greg Weissman - 2nd Vice President

Rachael Raynes - Secretary • Stuart Sweet - Treasurer • Steven Becker - Financial Secretary

Michael Kress - Member-at-Large • Marvin Reiter - Member-at-Large

Paul Zipperstein - Immediate Past President • Leslie Soltz - Sisterhood Representative

DIRECTORS

Gloria Cutler • Debra Holder • Howard Kaufman • Paula Kaye • Jamie Kogler • Melissa Ladenson •

Karen Levine • Cherrie Lubey • Susan Shimoff • Diane Stone • Dr. Mara Winick

Francesca Sweet - President, Sisterhood

OFFICE HOURS - Monday-Thursday 9:00AM to 5:00 PM; Friday 9:00 AM-4:00 PM

THE BULLETIN - CONGREGATION EMANU EL (USPS901-820)

Published monthly by Congregation Emanu El, 1495 Ford Street, Redlands CA 92373.

Periodical postage paid at San Bernardino CA.

POSTMASTER: Send address changes to Congregation Emanu El, 1495 Ford Street, Redlands CA 92373