



Congregation  
Emanu El

# THE BULLETIN

1495 FORD STREET · REDLANDS · CALIFORNIA · 92373 · (909) 307-0400

JANUARY 2018

TEVET-SHEVAT 5778

VOLUME XLVI - NUMBER 4

## SHABBAT CELEBRATIONS



**Friday - January 5, 2018 - 7:00 pm**

**Led by Rabbi Crystal, Paul and Michelle Zipperstein**  
Oneg Shabbat following the service

**Saturday - January 6, 2018**

**Torah Study led by Rabbi Crystal - 9:15 to 9:45am**

**SHABBAT MORNING SERVICE AT 10:00 AM**

**Led by Rabbi Crystal, Mary Lynn Stough and Michelle Anctil**

**Parashat Shemot - פרשת שמות Exodus 1:1 - 6:1 - Haftarah - Obadiah Isaiah 27:6 - 28:13, 29:22-23**

**Kiddush Following the Service**



**Friday - January 12, 2018 - 7:00 pm**

**Led by Rabbi Crystal and Cantor Bern-Vogel**  
Oneg Shabbat following the service hosted by Cherrie & Ron Lubey

**Saturday - January 13, 2018**

**Torah Study led by Rabbi Crystal - 9:15 to 9:45am**

**SHABBAT MORNING SERVICE AT 10:00 AM - "Second Saturday" Shabbat**

**Led by Rabbi Crystal and Cantor Bern-Vogel**

**Parashat Va'era - פרשת וארא**

**Exodus 6:2 - 9:35 - Haftarah - Isaiah 66:1 - 66:24 Kiddush Following the Service**



**Friday - January 19, 2018 - 7 7:00 pm**

**Led by Rabbi Crystal and Cantor Bern-Vogel**  
Oneg Shabbat following the services hosted by Phylis Sweet in honor of family.

**Saturday - January 20, 2018**

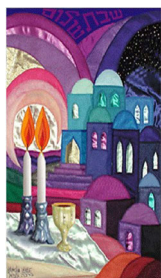
**Torah Study led by Rabbi Crystal - 9:15 to 9:45 am**

**SHABBAT MORNING SERVICE AT 10:00 AM**

**Led by Rabbi Crystal, Mary Lynn Stough and Michelle Anctil**

**Parashat Bo - פרשת בא Exodus 10:1 - 13:16 - Haftarah - Jeremiah 46:13 - 46:28**

**Kiddush After the Service**



**Friday - January 26, 2018 - 7:00 pm**

**Shabbat Shira - Choir Shabbat Led by Rabbi Crystal and Cantor Bern-Vogel**  
Oneg Shabbat following the service hosted by Leslie & William Soltz

**Saturday - January 27, 2018**

**Torah Study led by Rabbi Crystal - 9:15 to 9:45 am**

**SHABBAT MORNING SERVICE AT 10:00 AM**

**Led by Rabbi Crystal, Mary Lynn Stough, Michelle Anctil and Jerry Ripley**

**Parashat Beshalach - פרשת בשלח**

**Exodus 13:17 - 17:16 - Haftarah - Judges 4:4 - 5:31 Kiddush Following the Service**

### Upcoming Office Closure

The temple office will be closed on Monday, January 15, 2018 in observance of Martin Luther King Day. !

# Rabbinic Reflections

## Holidays of Light and Hope



Often when we think of holidays we think of history: the 4<sup>th</sup> of July and the American Revolution, Thanksgiving and the Pilgrims, Passover and freedom from slavery, Chanukah and the victory of the Maccabees. However Jewish holidays have not only historical meanings, but they express the way our spirits connect to the world. I am inspired by this idea in 5887 (2017-18). We have just concluded Chanukah and are preparing for winter holidays of Tu B'Shevat and Purim.

Chanukah celebrates light!!! The holiday comes at the darkest time of the year as we have marked the winter solstice – *when will the full days of light return...?* On an emotional level our souls fill with hope as we move from the shamash and one candle on the first night to the fullness of the shamash and eight candles. This year we had over 150 people for the Chanukah dinner. Special thanks are due to the Sisterhood for sponsoring the dinner and activities and to everyone who helped with the religious school program and service. Coming together inspired us with friendship and connection to our heritage.



Hope and rebirth continues with Tu B'Shevat. In some of the places I have lived it is hard to think of budding trees – some years I could not see trees because of over 100 inches of snow. But in Israel it is different. I remember one January in Jerusalem; it was late on a cold rainy afternoon. I finished taking a class and did not relish the thought of walking home in the damp and gloom. Then with the last bit of daylight, I noticed that a tree was beginning to bud; I still remember the pink and white of the flower that would soon form. I remember that Tu B'Shevat was approaching and felt blessed by the spirit new life.

Purim, too, echoes this experience. At the time when winter seems like it will not end, we have a holiday of sheer joy. Planning and anticipation amplifies the richness of the holiday. I have seen this as I travel from congregation to congregation. In some synagogues they put on full musicals, I remember the Beatles Purim, and the Rock n Roll Purim. In other temples preparing Shalach Manot are a synagogue tradition. One of my favorites was a large congregation where baking Hamantaschen was the youth group fundraiser; it was a fundraiser, but not any ordinary fundraiser. More than two months in advance of Purim every group in the synagogue took turns in the kitchen baking, youth groups, religious school students, Sisterhood, Brotherhood, Introduction to Judaism students, singles, everyone learned the recipe and took turns at the industrial mixer. Baking united a community in joy.

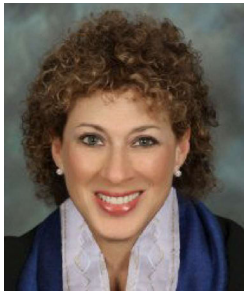


There was once a religious school curriculum entitled, “To See the World with Jews Eyes.” Our holidays bespeak the rhythm of life to bring us together to pass through seasons with darkness to return us to light, hope, joy, and life. Chag Samach.

L'Shalom,

*Rabbi Darryl Crystal*

## Cantorial Comments



**In Exodus this month!  
Names of God [Vaera]  
and Song of the Sea  
[Beshalach]**

Happy 2018! The start of the secular new year also happens to begin the second book of the Torah, Shemot. While the Hebrew word translates literally, to 'names,' and begins with the names of Jacob's sons, Exodus is also about our Liberation from Egypt. Nobel Laureate Isaac Bashevis Singer observed that, whenever he takes the bible from his bookcase, he cannot put it down. "I always find new aspects, new facts, new aspects, new facts, new tensions, new information in it. I sometimes imagine that, while I sleep or walk, some hidden scribe invades my house and puts new passages, new names, new events into this wonderful book."

In addition to the three Friday nights every month we are able to spend together, I also look forward to being with you on every 2nd Shabbat Morning of each month at which time we are offering a variety of creative and exploratory Shabbat services. Endeavoring to discover deeper and more spiritual facets of our liturgy, last month, we sang, danced and drummed to a Biennial-style Shabbat service. Prior 2nd Shabbat Mornings have included Healing Services, dancing through the liturgy, musically themed services before the High Holy Days, Elul and Contemplative services. This month, when we read Parshat Vaera on January 13, I hope you will join us when we explore different English translations of names of God within our service in contrast to the different Hebrew names for God we read about in the Torah.

On Friday night, January 26, we will celebrate SHABBAT SHIRAH – our SHABBAT IN SONG – Parshat Beshalach – The Song of the Sea, celebrating the miracle of the Israelites' escape from Egypt. Exciting and participatory music, enhanced with our choir and additional instrumentation, will help frame one of the highlights of our Torah and biblical heritage. We hope you will be part of these spiritual and especially melodious Shabbat celebrations.

*B'shira,*  
**Cantor Jennifer Bern-Vogel**

## Presidential Perspectives



Dear fellow congregants,

As a member of leadership here at Congregation Emanu El, there are defining moments which can prove both challenging and prideful. As a member of the Rabbinic Search Task Force, these words might properly define the past six months as they relate to the search for our next settled Rabbi.

I am pleased to tell you that at the time of this writing, a general agreement of terms has been reached with our leading rabbinic candidate, Rabbi Lindy Reznick Davidson. From the start, Rabbi Davidson has enjoyed the unanimous support of our task force; And during a special congregational meeting on December 17, Rabbi Davidson secured a vote of 39-1 in favor of becoming our next Rabbi.

Since that time Rabbi Davidson and myself have enjoyed a spirited dialogue about Congregation Emanu El's future including details surrounding her future employment. During this time great attention was paid to the overall health and financial well-being of our temple, while making certain Rabbi Davidson receives appropriate compensation.

From here we move into the contractual phase of the process by which Congregation Emanu El will be guided by an skilled outside contract attorney. While this is all very encouraging, it's important to know that nothing is final until a signed contract is secured.

There are many people who have helped move the process to this point. Search Chair Justin Swant has melded a skilled business approach along with a genuine compassion and concern for our congregation, and applicants, to create an environment conducive to success for all involved.

Task force members include:

Craig Beasley	Marla Drake	Joel Feinstein
Debra Holder	Bradley Hyman	Sidra Knox
Grace Lehmann	Marvin Reiter	Jeffrey Rosenfeld
Leslie Soltz	Justin Swant	Stuart Sweet
	Greg Weissman	

Their commitment is simply awesome and inspiring. As temple President, I thank each and every one for their diligence, determination and passion for our Temple.

I'd like to also thank Vice President Stuart Sweet whose role as "Acting President" following my Cancer diagnosis, has allowed me time to tend to my health and family, while still being able to focus on securing our next spiritual leader.

And finally, I would like to offer a heartfelt thanks to you our congregants. As I have said many times before, our temple should never be defined by one person or thing but rather by our community as a whole.

As we move forward, I see us embarking on a journey to search for new and innovative ways to ensure the Reform Jewish experience remains accessible, engaging and meaningful for all. Together with our new spiritual leader, your involvement and ongoing commitment to Congregation Emanu El remains the single most important key to our success.

May 2018 illuminate our beloved Congregation Emanu El and all those who make up our collective human community.

With gratitude and Shalom,

*Greg Weissman, Temple President*

## Treasurer's Report



Dear Fellow Congregants,

I hope you all had a wonderful Holiday season, with your family and friends. Is it my imagination or does the year come to a close faster as we get older? Elaina

and I along with our family wish you all Health and Happiness for the Year 2018.

We have much to look forward to this coming Year. We will have a new Rabbi to lead us into the Jewish Year 5779 and are anxious for our new direction. We will continue our efforts to reduce our mortgage obligation and grow Congregation Emanu El to levels we have enjoyed in the past. We will bring to all of you, new and enjoyable programs to engage our Jewish community in ways espoused by our Torah. Hopefully, we will engage with the greater area Community to increase understanding between the different cultures.

We will endeavor to be good stewards of the trust you have placed in us as your leaders and hope to be more engaged with all of our membership for the benefit and the future of our wonderful heritage. We can only do that if we have your continued support, both financially and spiritually.

**Marvin Reiter**

### Temple Board of Directors Meeting

**January 18, 2018**

**7:00 pm**

**Members of the congregation are always welcome to attend the meetings of the Board and to participate in its deliberations**

---

**Sisterhood Board Meeting  
Wednesday, January 10, 2018  
7:00 p.m.**

**at the home of Leslie Soltz**

**All Sisterhood Members are welcome**

## Sisterhood Speaks



When the Rabbinical Search Task Force was describing Congregation Emanu El in our "want ad" for a permanent rabbi, one of the assets that was emphasized was the strength and support of Sisterhood. That was not hyperbole. We have paid the bills to air condition offices, recarpet rooms, buy chairs and tables, buy new curtains for the social hall stage, purchase a new telephone system. Our members designed the kitchen in our new building and Sisterhood funds furnished it. There probably were more items we underwrote, but this list is just from my memory.

We enjoy providing the Kiddush after Rosh Hashanah, Break the Fast after Yom Kippur, Chanukah Dinner, Passover Seder and programs of enrichment and entertainment throughout the year. In order to do all these things we raise money through several projects. Our next big social event will be Casino Night on January 20 at Congregation Emanu El, ably chaired by Jill Weissman and Karyn Lehmann. We would love to have you join us to participate in our Superbowl Pool, play Vegas games, dress up in Denim and Bling and have dinner. Another project is the Mahjongg Tournament, which is legendary for sumptuous refreshments and gift baskets, and attracts players from all over Southern California. In February we also will give members the opportunity of purchasing Shalach Manot containing Congregation Emanu El Sisterhood's famous homemade hamentaschen for other congregants. And year around we maintain a lovely Sisterhood Judaica Gift Shop. Lisa Wise Wolk, assisted by Pat Kriso and their crew keep it open during School for Jewish Living hours and by appointment. You can always find a gift for a friend (or for yourself!) there.

Every year through Sisterhood I am so pleased to meet new people (men and women) who choose to pay dues, volunteer and make our congregation the heart of Judaism that I have found it to be in my 47 years of membership. Paula Kaye and Barbara Smith have worked very hard to extend membership to the whole community, and in the 2017-2018 calendar year we have 95 women members, 22 men who are associate members, and 6 who are junior members because they are under 21. Dues are paid from July 1 through June 30, but if you are not yet a member, we will still gladly welcome you.

You do not have to be Jewish or a member of Congregation Emanu El to join us. You don't even have to be a member of Sisterhood to come to our programs, meetings and fund raising events. On Mitzvah Day, Sunday, February 4, I am hoping that the entire congregation and our friends will join with us in projects to Tikkun Olam.

I am looking forward to 2018, to all the plans we have. My resolution is to enjoy the opportunity to meet you all and worship with you to strengthen our community.

**Leslie Soltz**

*President, Sisterhood*



## Mental Health Awareness

We all talk about the weather, so it must be universally important to us. Climate is harder to think about and understand, especially when we're dealing with global climate. But at this time in human history, we are now required to study carefully the climate of the entire earth, and to consider how large changes impact human and ecosystem health.

Rising sea levels, hotter summers, extreme storms, too much rain, too little rain – all these are now affecting people around the world, directly and indirectly, as the climate we've known for 10,000 years changes.

Again last month, here in California, we've watched flames kill and injure people and horses, devour wildland, a hospital, and peoples' homes. The connection to climate change of our specific troubles and many around the world, is difficult to trace, but we know that massive floods, fires, coastal storm surges, heavy rain that breaks records are all results that scientists expect from global warming. And they are increasing in number and intensity.

Just for a few moments let's think about children and even fetuses. Studies are showing that lower birth weight can be correlated with heat waves, for example. Psychologists also see that severe floods can cause PTSD in children. And probably no one needs to be convinced that the terrible stress of losing one's home to a fire or flood can worsen any mental health issue. Too many children in the Santa Rosa area are newly homeless, living with family who are insecure and anxious.

And consider the rash of suicides among farmers and farm workers, in this country and in many others. To the eternally unpredictable weather, the impacts of global pricing and trade, the need for hard cash to afford the chemical fertilizer, pesticides, and now manufactured seeds, add the actual changing of the local climate. It is hard to imagine how the suicide rates will come down without national efforts along with adequate resources to help such farmers. And small wonder that young people around the world, even in agricultural countries, are declining to make farming their life's work. It's a major problem.

And if we adults want to minimize climate change, we face a whole host of psychological reasons why that is very hard to do. More on that later.

For more information, please see "Mental Health and Our Changing Climate" (March 2017) by the American Psychological Association and ecoAmerica. Go to [apa.org](http://apa.org) then go to search box and enter **climate change and mental health**

The British newspaper *The Guardian* reported on American farmers' suicides last month. The BBC did a report last month on young peoples' rejection of farming around the world.

**Heidi Nimmo & Nancy Sidhu**  
*Co-chairs,  
Mental Health Awareness in Action*

## From Our Director of Education & Youth



Hello Congregation Emanu El families! The School for Jewish Living had a fun filled and festive December. Our students participated in an all-school art workshop where they moved through stations to make different creations for Chanukah. They wore the menorah shirts they made with their handprints during their short performance at the Sisterhood Chanukah party – they did a wonderful job and their sweet voices added joy to our holiday. A big thank you to the parents who brought their children out on a busy Friday to sing and enjoy services together.

The School for Jewish Living is on winter break from now until Wednesday, January 10<sup>th</sup>. When we come back we will continue our studies in Chai Curriculum and begin learning about Tu B'Shevat. Our students are making great progress in Hebrew and we will be working on more tefillah in each class. I hope our School for Jewish Living families have a relaxing break and I am looking forward to seeing everyone again in January.

*L'shalom*  
**Jillian Snyder**  
*Director of Education & Youth*

**School for Jewish Living Classes  
Resume on  
Wednesday, January 10th  
and  
Sunday, January 21st**

## Mazal Tov מזל טוב

We extend a Mazal Tov to **Kate Harvard** and **Jeremy Rozansky** on their recent engagement. Jeremy is the son of Elana Cohn-Rozansky and Dr. David Rozansky and the grandson of Rita and Rabbi Hillel Cohn and Barbara and Dr. Norman Rozansky.

A summer wedding is planned.

## In Memoriam זכרונם לברכה

We note with sorrow the recent deaths of

### **MORRIS J. SHEPPARD**

He is survived by his wife Diane Grief Sheppard  
his son Nashan Sheppard  
his two grandchildren  
and his brother Asher (Ann) Sheppard

May the memories of the righteous  
be for a blessing

### **ISABEL SADIE HELFMAN**

mother of Ilene Kirk, Alan (Kate) Helfman  
and Jeff (Janis) Helfman  
She was predeceased by her husband  
Stanley Helfman

### **DR. GARY SCHWARTZ, M.D.**

husband of Linda Ballard Schwartz  
father of Dr. Steven (Debi) Schwartz,  
Dr. Ilene (Steven Posalski) Schwartz,  
Kerri Keenan, Kortney Johnson  
He was predeceased by his son  
AIC Keir Damon Johnson

## Seniors for Seniors

For seniors of the greater San Bernardino-Redlands-Highland-Banning-Mountains and surrounding communities

### OUR FIRST EVENT OF 2018

**WEDNESDAY - JANUARY 17, 2018**

**11:45 AM**

**CONGREGATION EMANU EL**

**1495 FORD STREET - REDLANDS**



## Howie Levine Sings "JAZZNATRA"

Vocal Jazz In The Sinatra Tradition

Howie Levine sings 'JAZZNATRA - Jazz in the Sinatra Tradition.' Howie will entertain us with songs popularized by Sinatra and the Great American Songbook. He brings much energy and passion to every song he performs.

**INVITE YOUR FRIENDS TO JOIN YOU!!!**



**Catered Luncheon  
\$10.00 per person**

**Reservations must be made by  
Monday - January 15th  
by calling or emailing the temple  
(909)307-0400  
email: [cee@emanuelsb.org](mailto:cee@emanuelsb.org)**

## BYLAWS REVIEW - BE PART OF HISTORY

At our annual meeting, the Congregation will be asked to vote on revised bylaws that reflect our current policies and the realities of life in the 21st century.

The draft bylaws will be available for review at the temple office until March 15, 2018 or can be emailed to you. Contact the office for more information.

# Congregation Emanu El: A Home for Everyone



**A Workshop Presented by Rabbi Darryl Crystal**

**Sunday, January 7, 2018**

**10 am to Noon in the Social Hall**

**\*\*\*Social Media\*\*\*24-Hour News Cycle\*\*\*Multitasking\*\*\*  
Competing Activities\*\*\*Endless "to-do lists"\*\*\***

*Ever wonder about the future of our Congregation?  
How can we grow and thrive amid all the distractions of modern life?  
How can we build and strengthen our community?*

**In this workshop, we will explore the newest ideas about welcoming newcomers, engaging long-time congregants, and making synagogue membership meaningful for everyone.**

**Join Us and Help Build the Future**

Refreshments will be served.

Sponsored by the Engagement Task Force and Sisterhood  
RSVP by emailing [cee@emanuelsb.org](mailto:cee@emanuelsb.org) or calling (909) 307-0400

## Kabbalah and Mysticism:

Wisdom for a Life of Wonder

Rabbi Darryl Crystal

Wednesdays, January 17, 24, and 31. 7:00-8:15 PM

Jewish mysticism, Kabbalah, and spirituality stand at the forefront of American Jewish life. This search for meaning in Judaism has flourished during the past twenty-five years. Jewish mysticism began with the visions of God as experienced by the Prophets Isaiah and Ezekiel, flourished in Spain in the 13<sup>th</sup> century and spread through the Jewish world with the Hasidic movement in Eastern Europe. Today, exploration of mystical texts in Judaism is combined with insights from meditation, world spiritual traditions and modern visions of the self and the soul. We will explore mystical texts from the Bible, the master work of mysticism called the Zohar, Hasidic masters and modern rabbis and teachers, including Rabbi Larry Kushner, Sylvia Boorstein and Rabbi Art Green.



## Sisterhood's Casino Night 2018

# DEFINITIVE

*Saturday  
January 20*

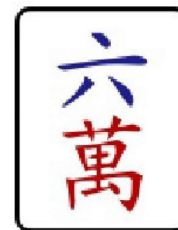
*& Bling*

Congregation Emanu El 1495 Ford St, Redlands

*Doors open at 6PM • Play, Stay, and Enjoy Until 10PM*

**\$36 per person** includes dinner, gaming money, soft drinks, and one drink ticket (\$40 at the door)  
Underwriting Opportunities Available for \$125! Pay for tickets by January 12 to receive \$100 extra gaming money!  
**Please mail or drop off payment in the office to reserve your early bird bonus!**

**Congregation Emanu El Sisterhood**  
**Invites You to Play in Our 10<sup>th</sup> Annual**  
**Mah Jongg Tournament!**



**Presidents Day**  
**Monday, February 19, 2018**  
**8:30 AM – 3:30 PM**  
**\$45 per player**

- ❖ **Continental Breakfast, Lunch, Snacks, Door Prizes**
- ❖ **Raffle for Wonderful Gift Baskets**
- ❖ **Cash Prizes for 1<sup>st</sup>, 2<sup>nd</sup> and 3<sup>rd</sup> Place**

8:30 am – Check-in, Continental Breakfast, Review Rules
9:15 am – 12:15 pm – Play 3 rounds
12:15 pm – Lunch, Prizes, Raffle Drawings
1:15 pm – 3:15 pm – Play 2 rounds
3:30 pm – Prize Winners & Final Raffle Drawings

**Congregation Emanu El**  
**1495 Ford Street, Redlands – 909-307-0400**  
**Questions: Call Paula Kay: 909-794-7416 or Julie Strain: 951-317-2003 or**  
**okpkaye@verizon.net or jbstain1130@gmail.com**

**Send Registration by Monday February 12<sup>th</sup>**  
**Early Bird Registration by February 5<sup>th</sup> receives a Raffle Drawing ticket for a \$10 Gift Card**

---

Please return this portion with check for \$45.00 payable to: Sisterhood by **February 12<sup>th</sup>**  
 Mail to: Julie Strain, 6383 Emmerton Lane, Highland, CA 92346

Name: \_\_\_\_\_ Phone: \_\_\_\_\_

Address: \_\_\_\_\_

City: \_\_\_\_\_ Zip: \_\_\_\_\_

E-mail address: \_\_\_\_\_

**I will bring Mah Jongg set** (include pushers & dice) \_\_\_\_\_

**I will be East** (remain at one table/keep score) \_\_\_\_\_

*\*Please note that "No Time Limit" tables will not be available this year.*

SAVE THE DATE



**Mitzvah Day**  
**Sunday, February 4, 2018**  
**9:30 a m to 2:30 pm**  
**Congregation Emanu El**  
**1495 Ford Street, Redlands**

Work Projects for Adults and Children of All Ages.

A "Mitzvah Fair"-- featuring community service and social justice projects and organizations supported by our members.

Bring a donation of disposable diapers and baby wipes—  
these are much needed by refugee families .

Continental Breakfast and Lunch will be provided.

If you have an idea for a work project and/or an organization to be featured in our Mitzvah Fair, please email or text Deb Holder at [debholder@att.net](mailto:debholder@att.net) or 909-496-4173.

*5<sup>th</sup> Annual Cantor's Concert*  
*celebrating*

**Bernstein Berlin**



**BROADWAY**

 Congregation  
Emanu El

**SAVE THE DATE**  
**March 18, 2018**  
**4:00pm**

*Cantor Jennifer Bern-Vogel  
and several of her amazing friends  
will present an incredible  
afternoon of music  
for your delight and enjoyment.*

# Introduction to Judaism Class



Learn about the basics of Judaism: Holidays, life cycle, prayer, God. This is a course for anyone interested in learning about Judaism or in conversion.

Dates: January 14—June 3, 2018 \* 2:00-4:00 PM (16 Classes)

Teacher: Rabbi Suzanne Singer

Location: Temple Beth El, 2675 Central Ave. Riverside

Cost: \$150 for the community/ \$75 CEE Members \* RSVP: rabbisinger@tberiv.org



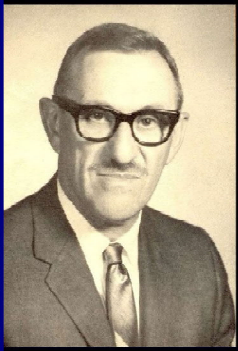
## Congregation Emanu El Conversion Program

*Congregation Emanu El is beginning a Conversion Program for people to learn about Judaism and talk about converting to Judaism. Contact Rabbi Crystal at Congregation Emanu El. Please plan on Taking the Introduction to Judaism Class at Temple Beth El which begins in January 2018.*

# Congregation Emanu El

presents the

## 32nd Annual Rabbi Norman F. Feldheim Memorial Lecture



The Rabbi Norman F. Feldheim Memorial Lecture was established in 1985 at the time of his death by members of Congregation Emanu El as well as many friends in the wider community. Rabbi Feldheim served as rabbi of Congregation Emanu El in San Bernardino from 1937 to 1971 and as Rabbi Emeritus from 1971 until his death. He was called to serve as a chaplain in the United States Army twice - once in World War II (1942-46) where he served in the European Theatre and once in the Korean conflict (1950-52). He was awarded the Bronze Star and six battle medals. In recognition of his notable leadership San Bernardino's Central Library was named the "Norman F. Feldheim Central Library." Over the years the annual lecture has dealt with some of Rabbi Feldheim's major interests including Art, Dreams, Interfaith activities and Social Justice. This year, in recognition of the 100th anniversary of the founding of the National Jewish Welfare Board which provides for the needs of Jewish military personnel, the Lecture will deal with Jews in the military and the special role of Jewish chaplains.

## Rabbi Denise Eger

will speak on

## REFORM JUDAISM: UNIQUELY PREPARED TO ADDRESS A WORLD SEEKING DIRECTION

Wednesday, February 7, 2018 at 7:00 PM

Congregation Emanu El – 1495 Ford St. – Redlands, CA



Rabbi Denise Eger is the founding rabbi of Congregation Kol Ami, West Hollywood's Reform Synagogue. Rabbi Eger has served pulpits in Canada, New York and Los Angeles. Following ordination, she served Congregation Beth Chayim Chadashim for four years as its first full-time rabbi.

In 2015 Rabbi Eger became President of the Central Conference of American Rabbis which is the largest organization of Rabbis; More than 2000 Reform rabbis world-wide. She was the first openly gay or lesbian rabbi to that position. Rabbi Eger is a past President of the Southern California Board of Rabbis (the first woman and openly gay person to do so) and a past President of the Pacific Association of Reform Rabbis.

Rabbi Eger believes that activism is an important part of her rabbinate. She has worked extensively with people with AIDS. She served as co-chair of the Community Advisory Board of the Shanti Foundation and is a past Chair of the Spiritual Advisory Committee of AIDS Project Los Angeles.

She co-chaired the Gay and Lesbian Rabbinic Network for two years. She is a past Treasurer of the Women's Rabbinic Network. She was the founding President of the Lesbian, Gay, & Bisexual Interfaith Clergy Association. She is active on the steering committee of the California Faith for Equality and helped to organize Jews for Marriage Equality. She is a member of the Religion and Faith Council of the Human Rights Campaign.

Denise L. Eger was raised in Memphis, TN. She graduated with honors from the University of Southern California with a Bachelor's Degree in Religion in 1982. She received her Master's Degree from Hebrew Union College - Jewish Institute of Religion in 1985 and was ordained as Rabbi in 1988 at the New York campus of HUC.

Rabbi Eger is married to Rabbi Eleanor Steinman and has a son in college.



## Happy Birthday!!! יום הולדת שמח

We rejoice with those whose birthdays occur in January and wish them a *Mazal Tov*:

1-January	Bernice Lowenstein	15-January	Jordaniel Wolk
1-January	Leon Schwartz	16-January	Judith Charlick
3-January	Howard Sukenik	17-January	Habtresh Ezra
5-January	Cherrie Lubey	20-January	Anna Boatman
6-January	Deborah Salow	21-January	Jeanne Raynes
7-January	Lawrence Raphael	21-January	Debra Holder
7-January	Valerie Feltenberger	23-January	Gideon Feinstein (15 years old)
7-January	Roberta Feltenberger	27-January	Melvin Eirew
8-January	Karen Levine	27-January	James Knox
9-January	Eric Beasley	28-January	Scott Wilkie
11-January	Emma Lehmann (16 years old)	29-January	Robert Gross
13-January	Howard Snyder	30-January	Grace Lehmann (18 years old)
14-January	Daniel Uffer	31-January	Rhoda Stahlberg
15-January	Katherine Kropf	31-January	Caleb Raynes (6 years old)

## Happy Anniversary!!!

We extend a hearty *Mazal Tov* to the following whose wedding anniversaries occur in the month of January:

6-January	Phyllis & Jerold Siperstein
17-January	Kat & Howard Grossman
20-January	Leona Aronoff-Sadacca & Joseph Sadacca

## **We Gratefully Acknowledge**

We gratefully acknowledge these contributions to our various temple funds:

### **TEMPLE FUND**

*In observance of the Yahrzeits of...*

**Sylvia Wallach** by Phyllis Sweet

**Flora Sentob** by Carl Mitchell

**Alyce Sentob Friedenberg** by Carl Mitchell

**Saul Upin** by Joanne and Donald Singer

**Ruth Becker** by Linda and Peter Rhein

**Ben Amdursky** by Harriet Briant

**Edna Schnitzer** by Denise and Mark Schnitzer

**Rose Burstin** by Bertha Fox

**Ruth Sherman** by Susan Stillerman

**William Atlas** by Pamela Eisner

**Sol Wallach** by Phyllis Sweet

**Jean Moss** by Annette and Lawrence Novack

**Lucille Druker** by Lia and Mark Robinson

*In memory of...*

**Max Hanover** by Marsha and George Hanover

**Jacques Zagha** by Kimberly Hudson and Marco Zagha

**Morris J. Sheppard** by Steven and Vickie Becker

*For the recovery of ...*

**Carol Wizer** by Francine Wixen

### **SISTERHOOD PULPIT FLOWER FUND**

*In observance of the Yahrzeits of...*

**Mae Cohen** by Monique Coleman

**Max Bittker** by Ellen Weiss

**Harry Leviant** by Ellen Weiss

**Albert Weiss** by Ellen Weiss

**Norman Leviant** by Ellen Weiss

**Ruben Joseph** by Thelma Press

### **RABBI DARRYL CRYSTAL'S DISCRETIONARY FUND**

*In honor of ...*

**Rabbi Crystal's** devoted service to CEE by Vickie and Steven Becker

### **CANTOR JENNIFER BERN-VOGEL'S DISCRETIONARY FUND**

*In honor of ...*

**Cantor Jennifer Bern-Vogel's** devoted service to CEE by Vickie and Steven Becker

### **LANDSCAPE FUND**

*In honor of ...*

**Judy Filsinger's** devoted service to CEE by Vickie and Steven Becker

### **MORTGAGE REDUCTION FUND**

*For the recovery of ...*

**Greg Weissman** by Joyce and Barry Eskin

**Carol Wizer** by Joyce and Barry Eskin

**Cindy Reitzenstein** by Joyce and Barry Eskin

*In memory of ...*

**Our loved ones** by Margy and Orville Spears

### **SCHOOL FOR JEWISH LIVING FUND**

*In honor of...*

**Jordan Becker** receiving his doctorate in International Relations from Kings College London and his selection for promotion to Lt. Colonel, United States Army by Steven and Vickie Becker and Jake and Peytra Kurily

### **HOME OF ETERNITY CEMETERY FUND**

*In memory of ...*

**Jewel Braman** by Vicki gimle Newton and Thomas Newton

**Irving Gimble** by Vicki gimle Newton and Thomas Newton

On occasions of joy or sorrow a contribution to one of our temple funds is always appropriate.

Contribution can be made to the following funds:

Home of Eternity Cemetery Fund  
Temple Fund  
Rabbi Crystal Discretionary Fund  
Rabbi Cohn Discretionary Fund  
Cantor's Discretionary Fund  
William Russler Memorial Archives Fund  
Mortgage Reduction Fund  
Sisterhood Pulpit Flower Fund  
Rabbi Hillel & Rita Cohn Campership Fund  
Lionel Heller Music Fund

# Yahrzeits

The following Yahrzeits will be observed during the month of January: Those with a (★) are inscribed on the Wall of Perpetual Memorial:

January 5-6	January 12-13	January 19-20	January 26-27
★Dan Bennell ★Hugo Blum ★Esther Braviroff Benjamin Braviroff Philip Cohn Ruth Comstock ★Ruth Comstock Anne Cornell Lillian Donenfeld ★Dorothy Eckstein ★Madeline Finkle Sophie Forman ★Esther Fox ★Sam Fox Esther Fox Dr. Marvin Gorenberg Gable Gorenberg Faith Gross ★Rachel Harris ★Henry Helman Simon Kaicener ★Aaron Kattan ★William Katzman ★Louis Kitay Jacob Kushner ★Al Lavitt ★Anna Lazar ★Percy Levenson Ira Lewis ★Daniel Marcus ★Harry Mathews ★Morris Meyer Roberta Nickerson ★Joseph Olenick Blanch Paleg ★Isadore Press ★Bernard Rest Benjamin Rifkin Guenther Rimbach ★Maurice Rogers ★Abraham Rosenzweig ★Rose Rubel Rose Schapiro ★Tillie Shane Louis Singer ★Morris Skolnek Rabbi Abraham Solomon ★Jess Speyer ★Emma Strauss ★Lillian Sutton ★LeRoy Teeter ★Sypera Wilkin ★Hyman Zlatin Katherine Zucker	★Harry Abber ★Rita Albert ★Max Berman Yetta Berman Ethel Bittker ★Jack Blumberg ★Elena Blumberg Max Buchman ★Audrey Chieffo ★Jennie Davis Marcia Frisch ★Henrietta Goodman ★Becky Hanover ★Erma Haydis ★Lionel Heller Bessie Horwitz ★Barbara Hurok Kenneth Irom ★Beatrice Kahn ★Belle Kantor ★Robert Kaufman ★Allen Kayrell ★William Klein Bea Levenson Charles Moniak ★Curtiss Mueller ★Henry Offe ★David Paris ★Barbara Parkin ★Jordan Patrovsky ★Mickel Rappaport ★Alan Robbins Al Robbins Yetta Robbins Morris Rosenberg ★Herman Roshwald Joseph Schulman Shirley Snofsky ★Dora Snyder Lynne Wallach ★Henry Weinberg Lillie Weinberg Mildred Weiner Bernice Weingarten ★Morris Wiseman ★Charles Yelsa	William Atlas ★Benjamin Axelrod Sadie Bresnick Lester Cooperberg ★Mark Greenky ★Isadore Greenwald Rose Hankin ★Aurelian Iancu ★Bess Jarson ★Harold Kassel ★Joel Kaufman ★Julius Kreger ★Florence Kristal Arthur Krooth ★Norman Leviant ★Shirley Levin Marian Marker ★Fay Meyer ★Walter Newberger Joseph Persh Yetta Picker Maysel Reyman ★Yetta Robbins ★Dorothy Robin ★Jennie Rothstein Dr. Schachtel ★Jenny Scher ★Ida Shapiro ★Dorothy Sharelson ★Sam Skadron Larry Swain ★Joe Tishkoff Saul Upin Barnett Vaugall ★Peter Virshup Louis Warsaw ★Shirley Weinstein ★Esther Weitzman Harry Yaroslow	★Pearl Alexander ★Samuel Arbeitsman ★Rose Aronoff ★Jennie Berman ★Anna Blaiss ★Samuel Blumenthal ★Melvyn Carsman Eve Charlick ★Luella Cohen ★Florence Connell Anna Cooperberg Carol Corbin ★Michael Craely James Darling Alan Eisner ★Joseph Erlanger ★Lillian Gimble ★Max Goodman ★Adam Kaufman ★Gertrude Kerner ★Samuel Klein ★Minnie Kritzer ★Fannie Lapides Anne Lebowitz ★Leah Levene ★Bernice Lipsky Tillie Luby ★Rose Meyers ★Katie Philipson Georgia Richmond ★James Rosen Louis Rosenberg Lou Rosenberg ★Samuel Snyder ★Rebecca Solter Herman Stein Harriet Stein ★Samuel Steinsapir ★Rose Stelzer ★Jack Vaugall ★Melvin Walder ★David Walder ★Jan Weinstein ★Fannie Weisser



1495 Ford Street - Redlands CA 92373

(909)307-0400

www.emanuelsb.org email:cee@emanuelsb.org

**DARRYL CRYSTAL - INTERIM RABBI - (909) 307-0400 ext 102 - dcrystal@emanuelsb.org**  
**JENNIFER BERN-VOGEL - CANTOR - (909) 307-0400 ext 103 - cantorjenbv@gmail.com**  
**HILLEL COHN - RABBI EMERITUS - rabbihcohn1@cs.com**  
**JUDY FILSINGER - ADMINISTRATOR - (909) 307-0400 ext 104 - templeadmin@emanuelsb.org**  
**JILLIAN SNYDER - DIRECTOR OF EDUCATION & YOUTH -**  
**JERRY RIPLEY - ORGANIST/CHOIR DIRECTOR**

***EXECUTIVE COMMITTEE***

**Greg Weissman - President • Stuart Sweet- Vice President**  
**Dr. Susan Damron - Secretary • Marvin Reiter - Treasurer • Stacy Knox - Financial Secretary**  
**Members-At-Large: Steven Becker, Michael Kress , Paul Zipperstein**  
**Craig Beasley - Immediate Past President**

***DIRECTORS***

**Steven Becker • Harriet Briant • Joel Feinstein • Paula Kaye • Melissa Ladenson • Sheri Maltzman**  
**Margie Orland • Kathy Rosenfeld • Susan Shimoff • Julie Strain • Justin Swant • Scott Wilkie**  
**Leslie Soltz - President, Sisterhood**

***Member of Union for Reform Judaism (URJ)***

**OFFICE HOURS - Monday-Thursday 9:00AM to 5:00 PM; Friday 9:00 AM-4:00 PM**

**THE BULLETIN - CONGREGATION EMANU EL**

**Published monthly by Congregation Emanu El, 1495 Ford Street, Redlands CA 92373.**

**POSTMASTER: Send address changes to Congregation Emanu El, 1495 Ford Street, Redlands CA 92373**