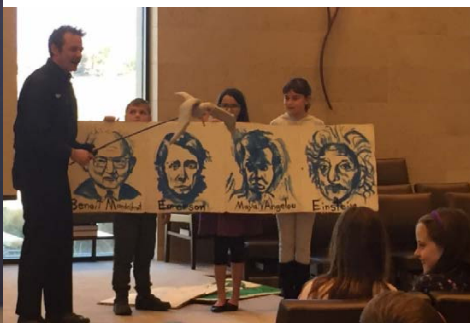


# What's Happening at Congregation Emanu El?

## SJL Teen Tour with Rabbi Sherwood: "Jewish San Francisco"



## Tu B'Shvat Seder & Tu B'Shvat Play "Hava's Puppet Tree"



# SHABBAT CELEBRATIONS



## **SHABBAT ALIVE**

**Friday - February 5, 2016** - Led by Rabbi Sherwood  
Catered Dinner at 6:00 pm / "Shabbat Alive" Service at 7:00 pm  
Oneg Shabbat following the service sponsored by

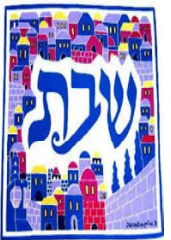
**Saturday - February 6, 2016** - Led by Rabbi Sherwood  
Torah Study - 9:15 to 9:45 am - Shabbat Morning Service - 10:00 am  
Parashat Mishpatim - פרשת משפטים  
Exodus 21:1 - 24:18 - Haftarah - Jeremiah 34:8 - 34:22; 33:25 - 33:26  
Kiddush Following the Service



## **60-MINUTE SHABBAT**

**Friday - February 12, 2016** - Led by Rabbi Sherwood  
"60-Minute Shabbat" Service at 7:00 pm  
Oneg Shabbat following the service sponsored by

**Saturday - February 13, 2016** - Led by Rabbi Sherwood  
Torah Study - 9:15 to 9:45 am - Shabbat Morning Service - 10:00 am  
Parashat Terumah - פרשת תרומה  
Exodus 25:1 - 27:19 - Haftarah - I Kings 5:26-6:13  
Kiddush Following the Service



## **CHOIR SHABBAT**

**Friday - February 19, 2016 - 7:00 pm** - Led by Rabbi Jay Sherwood & Cantor Jennifer Bern-Vogel  
Kabbalat Shabbat with the Congregation Emanu El Choir at 7:00pm  
Oneg Shabbat following the service sponsored by Jill & Greg Weissman

**Saturday - February 20, 2016** - Led by Rabbi Jay Sherwood & Cantor Jennifer Bern-Vogel  
Torah Study - 9:15 to 9:45 am - Shabbat Morning Service - 10:00 am  
Parashat Tetzaveh - פרשת תצוה - Exodus 27:20 - 30:10 - Haftarah - Ezekiel 43:10-43:27  
Kiddush Following the Service



## **SISTERHOOD SHABBAT**

**Friday - February 26, 2016 - 7:00 pm** - Led by Rabbi Jay Sherwood & Cantor Jennifer Bern-Vogel  
Kabbalat Shabbat at 7:00pm  
Oneg Shabbat following the service sponsored by Alaina Reiter

**Saturday - February 27, 2016** - Led by Rabbi Jay Sherwood & Cantor Jennifer Bern-Vogel  
Torah Study - 9:15 to 9:45 am - Shabbat Morning Service - 10:00 am  
Parashat Ki Tisa - פרשת כי תשא - Exodus 30:11 - 34:35 - Haftarah - I Kings 18:1-18:39  
Kiddush Following the Service

## SUMMER ISRAEL TRIP POSTPONED

JOIN US NEXT SUMMER FOR THE TRIP OF A LIFETIME!!

### ISRAEL 2017 WITH RABBI JAY & LISA SHERWOOD

After much discussion with interested travelers, we have decided to postpone our Congregational Israel Trip to the Summer of 2017. This will give more people the opportunity to join us for this amazing journey. The new dates for the trip will be announced soon. In the mean time, start saving for your trip of a lifetime.



## Rabbinic Reflection



On Sunday, January 31<sup>st</sup>, after decades of conflict, compromise was reached on prayer at the Western Wall in Jerusalem. For decades, Orthodox law has dictated custom at the Wall, where men and women pray in separate sections, and women are forbidden to read from the

Torah. Until recently, it was illegal for a woman to wear a tallit. The new agreement is historic, even though in reality, it changes almost nothing.

Currently, the Western Wall (Kotel) plaza contains a large gathering area at the back, and gender separated prayer areas at the Wall, all run by the ultra-Orthodox. Down the hill and hidden from view of the Kotel plaza is a smaller non-Orthodox area. It is in an archaeological garden that is not always open and does not have Torah scrolls or prayer books readily available. Under the new deal, all of this will remain the same.

The changes? The non-Orthodox space will double in size and gain a more prominent entrance. In reality, it is just a small makeover of the area. The Orthodox area of the site and the plaza behind it (what everyone REALLY considers to be the Western Wall) will barely change and will remain under ultra-Orthodox control.

So what is historic here? The fact that for the first time in Israeli history, an agreement was concluded between the three major denominations of Judaism—Reform Conservative and Orthodox. Along with the Israeli government, all of the denominational leaders, as well as the Women of the Wall, have signed off on the agreement.

So what happens now? Construction in Jerusalem is nightmare, as every move must be approved by the Antiquities Department since archaeological sites may be under the construction area. Without problems, the estimated construction time is two years. Additionally, funding for the new construction has not been guaranteed. Also, there will certainly be Palestinian protests. And perhaps most importantly, most Israelis just don't care.

As reported in the Times of Israel "Four out of five Israelis support space for non-Orthodox Jews at the Wall. [However], compared to national security or economics, Israelis don't care very much about religion and state. Within the realm of religious reform, the Western Wall ranks pretty low. Israelis are much more likely to campaign for changes that would affect their lives, like civil marriage in Israel, a liberalization of conversion policy or an expansion of military conscription. A holy site in a city some Israelis rarely visit just isn't as relevant."

What will be the end result? I'm not holding my breath to find out!

Kol tuv,

*Rabbi Jay Sherwood*

## Cantorial Comments



It's been a few years since our last Sisterhood Shabbat and I am truly looking forward to "taking a back seat" with Rabbi Jay Sherwood while our capable and dynamic Sisterhood women lead us in worship on Shabbat 'Ki Tisa,'

February 26. Over the past year or so we have seen not only growth in involvement, but in particular, the advancement of spiritual growth in our organization of Sisters.

Throughout the ages, women have always needed other women for support, encouragement, advice and affirmation. I feel blessed to be part of this vibrant, caring and diverse Sisterhood.

May we all continue to learn from one another, grow in numbers and in wisdom - *hazzak, hazzak v'nitchazek* - and may we be strengthened.

*Cantor Jennifer Bern-Vogel*

### In Memoriam זכרונם לברכה

The congregation notes with profound sorrow the recent death of:

#### **Esther Weitzman**

She is survived by her daughter Terri (Rick) Joslin, her brother Irv (Merla) Charne, and her sister Anita Laufer, as well as 6 grandchildren

#### **Bernice Lipsky**

She is survived by her daughter Julia Woods and her daughter Ann (George) Boss

May the memories of the righteous be for a blessing!

### Mazal Tov מזל טוב

**Ashleigh and Scott Wilkie**  
on the birth of their daughter  
**Elise Wilkie**

Elise will receive her Hebrew name at a Brit Bat ceremony during Shabbat morning services on Saturday, February 6, 2016

## Presidential Perspectives



As we enter the congregation's 125<sup>th</sup> year as a chartered institution, we face challenges that our parents and grandparents could not have imagined. We have evolved into a mostly middle-class demographic now and can't count on large donations from wealthy business

owners as we have in the past. That means that volunteer participation is more critical than ever.

I would like to establish three objectives for the remaining six months of the fiscal year. First, as increasing congregational growth is critical, we have a need for an active and vibrant Membership Committee. This group will follow up all information about prospective members, serve as an interface for new congregational members and generate ideas to recruit the non-affiliated Jews of our section of the Inland Empire. Second, is our need to reestablish our School for Jewish Living Committee. This group will serve as an interface between the SJL and the board of directors, providing feedback on current performance and exploring ideas for future improvements. Ideally this group will be composed of parents of SJL students and congregants with experience in education. Finally, our facility would benefit from a Grounds Committee. This group will be responsible for the outward appearance of the synagogue, performing tasks such as inspection of outdoor lighting, examination of the building's exterior, light weeding and keeping the board apprised of any acute or chronic needs of the facility. Your participation is welcome and will enhance our congregation's opportunities for success.

I am excited to announce that in addition to Shabbat Alive and our traditional Shabbat service, we will soon add a new worship format. On Friday, February 12, from 7:00-8:00 PM, we will begin a monthly 60 Minute Shabbat service. This service will be an excellent alternative for those congregants who would like a more concise Shabbat experience. The 60 minute Shabbat will occur from on the second Friday of each month hereafter. Please attend and give us your feedback on our new worship format.

There are a few upcoming events to consider. On Saturday January 30, Sisterhood's Casino Night will be held from 6:30-10:30. This is always an exciting evening featuring table games, dinner and beverages. Make your reservations at the temple office. February 7 from 2:00-7:00 PM there will be a "Souper" Bowl Party in the social hall. The football game will be projected on a big screen and everyone will bring their favorite soup to share. If football is not your thing, bring a board game to pass the time while you dine. Lastly, save Monday, February 15, for Sisterhood's Mah Jongg Tournament. Details will be forth coming.

*L'Hitraot,*

***Craig Beasley***

## Sisterhood Speaks



This past month our Sisterhood enjoyed a field trip to see "Not That Jewish" with Monica Piper in Santa Monica along with a wonderful lunch at Izzy's Deli. Thank you to all of those who came and made the drive- it

proved to be well worth it! In addition, thank you so much to Stacy Knox, Jill Weissman, all of our underwriters and dealers who made Casino Night such a fantastic and fun success. This month we will have our Sisterhood Board meeting on February 7<sup>th</sup> and have rescheduled our brunch with Kathy Trainor for March 13<sup>th</sup>.

Our Maj Tournament will be February 15 and is an all day experience filled with friends, games, food and prizes. Please RSVP to the Temple office. You may contact either Paula Kaye or Carole Wizer if you are able to help with donating items for prize baskets, bringing food, or with set up or clean up.

On February 26<sup>th</sup> we will have our annual Sisterhood Shabbat- and all are invited to attend this very special evening dedicated to celebrating women and Sisterhood. We are asking that people attending bring a dessert to share for our Oneg following the service. In addition, please bring a photograph of a woman of significance in your life so that they may be displayed and shared during the Oneg. If you have turned 80 years young during the past 2-3 years or know of someone who has, please let the Temple office know. We are compiling a list of octogenarians who have not yet been honored.

Our next Sisterhood Board meeting is February 7<sup>th</sup> at 10:00 a.m. at the Temple.

Best,  
*Francesca Sweet*

### **Temple Board of Directors Meeting**

**Thursday - February 18, 2016 7:00pm**

**Members of the congregation are always welcome to attend the meetings of the Board and to participate in its deliberations**

## Treasurer's Report



My friends,

December is the halfway point of our fiscal year and it's also when we get our last burst of income. Many people choose to pay their full dues before the end of the year to get the tax deduction... and let me say a special THANK YOU to everyone who has paid their dues in full. We're a little ahead of budget in the dues department for now and that makes me smile.

By the numbers, it was a good month, but not exceptional: While income of \$55,000 exceeded expenses of \$32,000, we had hoped to bring in even more in December. I would like to thank everyone who paid full school tuition by December 1, and also those who made additional capital campaign contributions last month. You know who you are, and you know how grateful I am.

I'm pleased to say that our office, capably led by Judy Filsinger, has done an amazing job of managing expenses while making sure we're providing all the services you want and need. Every year, we give our office staff a nearly impossible task – serve the congregation while spending even less than the year before. The office comes in under budget every time, and this month was no exception. Judy manages a stable of volunteers who all work very hard to keep things running smoothly; I'd thank each and every one by name if I wasn't sure I'd forget someone. There's still more work to do, though, and if you find yourself with some free time give the office a call. We can always use an extra hand.

I would especially thank the Kress family for the donation of a computer for the office, which will make it easier for us to stay up to date on expenses. Most of the office's computers are more than 7 years old and if you are upgrading, think about following in the Kress family's footsteps.

As we come into 2016, we face many challenges but the best part is that we face them together as one united congregation. Together, there's nothing we can't do!

Peace,  
Stuart Sweet

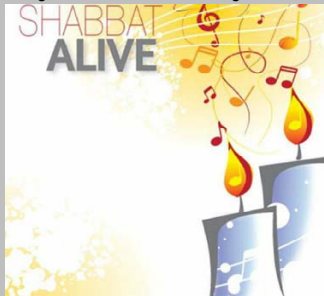


Parents, as you begin to think about summer plans for your children, please consider sending them to a Jewish camp. Study after study has shown that one of the most important experiences in establishing Jewish identity is going to a Jewish Summer Camp. Campers experience Judaism twenty-four/seven - a difficult proposition in the Inland Empire. The memories and experiences our youngsters come home with are indescribable. Campers return from a Jewish summer camp with stories of how they spent Shabbat, activities that challenged them both intellectually, spiritually and physically; and, most importantly, they will forge new, life-long friendships.

Later this month, we will announce dates that Camp Mountain Chai and URJ Camp Newman will visit us for presentations about summer camp. To qualify for a scholarship, you may attend one the these camps, or one the other area Jewish camps, including: Camp Hess Kramer, Gindling Hilltop Camp, Camp JCA Shalom, Camp Ramah, Camp Alonim - or any other Jewish residential camp. The Sisterhood of Congregation Emanu El oversees the **Rabbi Hillel and Rita Cohn Campership Fund**.

Funds have been set aside to assist Congregation Emanu El families with sending their children to camp. Campership Applications are available at the Temple Office or you may contact Leone Hyman. Camperships are also available from the **One Happy Camper Foundation** through the various camp offices. Please contact Rabbi Sherwood for information about this campership or any other information about Jewish Summer Camps.

## Shabbat Alive Dinner & Service Friday, February 5, 2016



Shabbat Alive is a community dinner followed by a participatory, musical Shabbat service in the round.

Dinner is \$10/person, but children under 10 years old pay their age. The cost at the door is \$13.00 if food is available. Please make your payment at the temple office. This month's menu: **Middle Eastern**

Dinner begins at 6:00pm  
Shabbat service begins at 7:00pm

RSVP at

<https://www.eventbrite.com/e/shabbat-alive-january-2016-tickets-20146410456>

## Dipping Your Toes in the Sea of Talmud



### A NEW ADULT EDUCATION CLASS with Rabbi Jay Sherwood

The rabbis of old said the Talmud is so vast, that reading it is like swimming in the sea. What is the Talmud? How is it studied, what does it contain, and who are the rabbis that are quoted? Why is it relevant to me as a modern American Jew?

### THIS IS A THREE PART CLASS

TUESDAYS, FEBRUARY 23,

MARCH 1 & MARCH 8

From 7:00 to 8:30 pm

## "Souper" Bowl Party Sunday, February 7, 2016 2:00pm - 7:00pm



Root along with your Congregation Emanu El friends as we present Super Bowl 50 live on the big screen (or the big wall!). We will have some munchies to share, and you can bring some as well.

During halftime, we will host our first ever "Souper" Bowl. Bring your homemade soup to share (crock pots are great to keep everything hot and tasty).

Before the NFL crowns a winner of Super Bowl 50, we may crown a winner of "Souper" Bowl 1.

RSVP here:

<https://www.eventbrite.com/e/souper-bowl-party-tickets-20958974858>



Congregation Emanu El is in need of the following items and services:

Table & Chairs for Rabbi's Office

Couch for Rabbi's Office

Permanent Outdoor Signage

Video Projector

or you can sponsor a month of:

Gardening

Maintenance

Electricity

Janitorial Services

Contact the temple office if you are interested in donating one of these items.

Thank you!

JOIN US FOR



On the 2<sup>nd</sup> Friday of each month  
join us for an Erev Shabbat experience  
for children in Pre-K through 1<sup>st</sup> grade  
(but all are welcome to join in!)

Join Rabbi Jay Sherwood for  
a 30-minute service  
with music, stories and a Hershey's kiss  
to welcome the sweet Shabbat

Upcoming Dates  
February 12 - 6:00pm-6:30pm  
March 18 - 6:00pm-6:30pm

## Mark your calendar *Mah Jong Tournament 2016!*

*Monday, February 15, 2016*  
*President's Day*



*Preparations are already underway to make  
the 2016 Mahj games the biggest and best*

*AND most fun ever!*

One of the most popular attractions of the day are  
the beautiful baskets loaded with gifts and treats  
that are raffled off. In the past, we've been able to  
make over a dozen large baskets thanks to the  
donations of members of our temple and  
community.

Sisterhood would greatly appreciate your  
donation of anything you feel would be  
appropriate to place in one of these  
baskets--including any large baskets you may  
already have or would be willing to buy. Ideas for  
donated basket items are unused gifts you might  
already have in your closet, such as beauty  
products, kitchen ware, or decorative home  
accessories. Items or gift cards that you feel  
comfortable soliciting from favorite businesses  
would be welcome as would clear wrapping paper  
or large ribbons for the baskets.

To donate or for further information, please call or  
email:

Paula Kaye:  
909-794-7416 or [okpkaye@verizon.net](mailto:okpkaye@verizon.net)

or  
Carole Wizer:  
909-794-4376 or [wizeguytoo@gmail.com](mailto:wizeguytoo@gmail.com)

## PResident's Day



**February 15, 2016**

Please be advised that the Temple Office will be  
closed in observance of President's Day on

Monday, February 15, 2016.

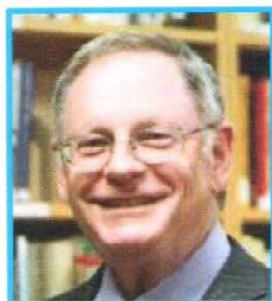
# **"The Care for our Common Home"**

*An evening of religious dialogue on  
our environment*

**Tuesday, February 16, 2016**

**7 pm**

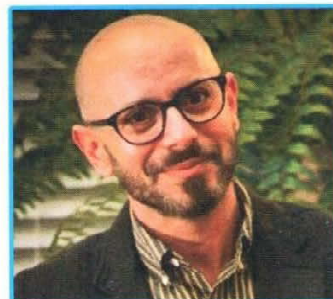
The Pastoral Center  
1201 E Highland Ave.  
San Bernardino, CA 92404



**Rabbi Michael Lotker**



**Bishop Gerald Barnes**



**Dr. Imad Bayoun**

Pope Francis's letter "Care for our Common Home, "Laudato si", has prompted a strong religious response on the need to care for the environment, the world our Creator has given us.

Join us for presentations by these three prominent religious leaders expressing Jewish, Christian, and Muslim perspectives on the environment.

*The evening will begin with musical presentations by Jewish, Muslim and Catholic singers.*

***The evening is sponsored by the Roman Catholic Diocese of San Bernardino with the Morrow-McCombs Commission, an organization devoted to strengthening interfaith understanding.***

Join us for our annual  
**Sisterhood Shabbat**

**Friday,  
 February 26  
 7:00 PM**

**at Congregation  
 Emanu El**

**Please bring a dessert item  
 to share for Oneg Shabbat  
 following  
 services**



Sponsored by



**Sisterhood's  
 "TRASH OR TREASURE?" BRUNCH**

**with Kathy Trainor and Jimmi Mitchell**

**March 13, 2016 • 9:30am  
 at Congregation Emanu El**



**Bring one  
 item for a  
 FREE  
 appraisal!**

*Admission \$10 includes appraisal of one item*

*RSVP to the temple office*

*at [cee@emanuelsb.org](mailto:cee@emanuelsb.org) or call 909.307.0400*

*Our member, Kathy Trainor, owner of Antique Arcade, Redlands  
 and Jimmi Mitchell of Octavia's Scrapbook will conduct the appraisals*



Personal property appraisals should be considered as entertainment and may not be valid for insurance purposes.

# Happy Birthday!!!

## יום הולדת שמח

We rejoice with those whose birthdays occur in February and wish them a *Mazal Tov*:

1-Feb Matthew Klein	11-Feb Eliot Schachtel (14 years old)	22-Feb Sophia Paisner (5 years old)
2-Feb Jayson Steinberg (4 years old)	11-Feb Harvey Persh	23-Feb Aaron Katz
4-Feb Daniel Gorenberg	12-Feb Eileen Kaufman	23-Feb Bonnie Goler (13 years old)
6-Feb Rita Cohn	12-Feb Denise Schnitzer	23-Feb Dylan Kress (2 year old)
6-Feb Lia Robinson	12-Feb Cheryl Sukenik	24-Feb Cantor Jennifer Bern-Vogel
6-Feb Stanley Goodman	12-Feb Francesca Sweet	25-Feb Gary Fenster
7-Feb Amanda Campbell	14-Feb Harriet Herman	25-Feb David Sukenik
7-Feb Ilana Sherwood (11 years old)	16-Feb Janet Rabinowitz	26-Feb Francine Wixen
8-Feb James Stuckey	18-Feb Sari Schachtel	27-Feb Sheryl Austin-Fischer
8-Feb Hilary Levine	19-Feb Bruce Ferguson	27-Feb Johah Needelman (14 years old)
9-Feb Beth Freimuth	20-Feb Denise ChristianScher	27-Feb Seth Needelman (14 years old)
10-Feb Noah Holycross	22-Feb Marjorie Brown	28-Feb Stanley Roshwald
11-Feb Aaron Eirew	22-Feb Mitchell Kriso	28-Feb Taylor Brooks (14 years old)

## Yahrzeits

The following Yahrzeits will be observed during the month of February: Those with a (★) are inscribed on the Wall of Perpetual Memorial:

February 5-6	February 12-13	February 19-20	February 26-27
Ellen Herschberg Samuel Nachman ★Etta Rosenberg ★Rabbi Norman Feldheim ★Dorothy Falk Nathan Goler Hyman Klingman ★Mildred Harrison Jack Tancos Anne Darling ★Sam Fredason ★Lester Orland Luby Lubinsky ★Rachel Kramer ★Gladys Teeter ★Bess Shvemar Irene Eliot ★Harry Crohan Morris Barnett Sam Charlick ★Oscar Salow ★Sidney Eliot Marian Lippman ★Carl Cohn ★Ruth Katzeff ★Abraham Harris ★Arnold Raynes ★Rose Abber ★Tillie Birnkrant ★Harry Robin ★Harold Hanover ★Harry Langer ★Samuel Kaufman Sholom Schwartz Sy Zucker Gerson Wolk ★Elaine Robbins ★Marcelle Cohen Lillian Zlatin Margaret Tancos	★Sydney Berman Stanley Paleg ★Michael Klein Sidney Solmon Oscar Sandoval ★Zohra Ohana Morris Atlas ★Bernice McDonald ★Joseph Berenbaum Nettie Elsenstein ★Marcus Shimoff Milton Schon ★Enia Tabatchnik ★Rosa Hertz ★Rose Gottlieb ★Samuel Yaroslow Mildred Scharf ★Samuel Neuburger ★Elizabeth Metz Patricia Langer ★Leonard Baum ★Rose Greenberg ★Alta Ernstein Jacob Kitay Max Ruben William Guzik ★Reuben Berkman ★Annie Shvemar Walter Pastushek ★Samuel Finkle ★Helmar Schlein ★Esther Zafman Stanley Cohen David Lipsky Betty Arlein Kay Prestidge	★Barney Lampe ★Lucille Venne ★Arnold Kershner ★Hershel Swedlove ★Stanley Pro ★Rachel Mitchell Arnold Ray Lena Israel Abraham Peters Lillian Gottlieb ★Frances Harris ★Clara Weintraub ★Samuel Hodes ★Rose Patrovsky Frieda Lichtenstein Allen Schwartz ★Rebecca Kirshbaum ★Jay Friedman ★Eva Jerome Solomon Behar Robert Brill ★Bette Finkler ★Esther Belovsky ★Joseph Gordon Harry Noodleman ★David Sentob ★Sol Gorman ★Joseph Langer ★Marcia Kravitz ★Helene Koren ★Rose Jacobs ★Morris Bellman Adele Schwartz ★Anita Weissman	★Marcus Langer William Winter ★Edith Pasman Sarah Gerber ★Jeannette Harris ★Edith Tiner R.N. Boris Vaysman ★Ruth Reissman ★Benjamin Smith ★Anna Feldheim Sadie Tannenbaum ★Rose Robin ★Victor Simon Eleanor Byman Louis Eckhaus Benjamin Goodman ★Sam Robinson ★Lillian Finkleman ★Frieda Aronoff ★Abe Lerner Albert Sussman Charles Newman ★John Leinen ★Haskell Davidson Benjamin Davis Elliott Satz ★Sarah Galper ★Clara Rubinstein Benjamin Feldman Ezra Dotan Alice Vogel Sachs ★Florence Teirsten ★Louis Meyer ★Beth Berstein ★Benjamin Katzman ★Samuel Braman Kurt Homburger ★Mary Black ★Evelyn Rose ★Brett Rifkin Edward Shebelow ★Sylvia Kord

## Happy Anniversary מזל טוב!

We congratulate and extend a Mazal Tov to the following whose wedding anniversaries occur in the month of February:

3-Feb Lia & Mark Robinson  
6-Feb Emily & Craig Beasley  
9-Feb Karyn & Stephen Lehmann  
15-Feb Mrjorie & Neil Brown  
22-Feb Carole & Phil Wizer  
25-Feb Katherine & Jeffrey Kropf

## We Gratefully Acknowledge

We gratefully acknowledge these contributions to our various temple funds:

### HOME OF ETERNITY CEMETERY FUND

*In memory of...*

**Irving Gimble** by Vicki and Thomas Gimble Newton

**Jewel Braman** by Vicki and Thomas Gimble Newton

### TEMPLE FUND

*In observance of the Yahrzeits of...*

**Anita Strenger** by Douglas Strenger

**Louis Singer** by Joanne and Donal Singer

**Herman Roshwald** by Stanley Roshwald

**Dr. Morris Skolnick** by Vickie and Steven Becker

**Rose Schapiro** by Irene Schapiro

**Benjamin Rifkin** by Charlotte and Jack Rifkin

**Saul Upin** by Joanne and Donald Singer

**Isadore Press** by Thelma Press family

**Kenneth Irom** by Beverly Irom

**William Atlas** by Pamela and Alan Eisner

**Al Robbins** by Irene Schapiro

**Yetta Robbins** by Irene Schapiro

**Anne Lebowitz** by Nancy Justice

**Joel Kaufman** by Eileen Kaufman and family

**Shirley Weinstein** by Eileen Kaufman and family

**Sypera Wilkin** by Eileen Kaufman and family

**Hugo Blum** by Sonja and L. Lavitt

**Gertrude Kerner** by Philip Kassel

**Sylvia Irom** by Beverly Irom

**Rebecca Solter** by Vickie and Steven Becker

**Lynne Wallach** by Phyllis Sweet

**Ralph Kress** by Renee and Michael Kress

**Rose Alexander** by Bonnie and Bernie Goler

**Nathan Alexander** by Bonnie and Bernie Goler

**Pearl Alexander** by Bonnie and Bernie Goler

**Belle Kantor** by Claudette and Gabriel Guy

**Gigi Ryan** by Harriet Herman

*In memory of...*

**Stanley Mishook** beloved husband, father and grandfather by Anita Mishook

**Julius Kreger** by Francine Wixen

**Becky Hanover** by Norman Hanover

**Becky Hanover** by Marsha and George Hanover

**Jacqueline Russler** by Hildegard and DeRobert Longmire

**Jacqueline Russler** by Vickie and Steven Becker

**Jacqueline Russler** by Gloria and Max Chodax

**Nathan Gainsboro** by Vickie and Steven Becker

**Nathan Gainsboro** by Sharon and Richard Granowitz

**Nathan Gainsboro** by Eileen Kaufman

**Nathan Gainsboro** by Leona and Joe Arnoff

**Nathan Gainsboro** by Rita and Rabbi Hillel Cohn

**Nathan Gainsboro** by Gloria and Max Chodax

**Nathan Gainsboro** by Francine Wixen

**Harold Hanover** by Norman Hanover

*Recovery of...*

**Judith Buchband** by Vickie and Steven Becker

*In honor of...*

Receiving First Ahyah and Hagbah by **Brett Barenholtz**

Marriage of **Bonnie Konowitch and Richard Simon** by Joyce and Barry Eskin

### RABBI'S DISCRETIONARY FUND

*In appreciation of ...*

**Rabbi Jay Sherwood** by Sherman Gallas

### CANTOR'S DISCRETIONARY FUND *In honor of...*

**Stuart and Francesca Sweet's** birthdays by Maxine Becker

### MORTGAGE REDUCTION FUND

*In Memory of....*

Our loved ones by Margy and Orville Spears

### WILLIAM RUSSLER ARCHIVES FUND *In memory of...*

**Jacqueline Russler** by Carol Pristoop

**Jacqueline Russler** by Carol Heller

**Jacqueline Russler** by Sharon and Richard Granowitz

**Jacqueline Russler** by Phyllis Newman

### LIONEL HELLER FUND

*In observance of the Yahrzeits of...*

**Lionel Heller** by Carol Heller

**Minnie Kritzen** by Carol Heller

**Frank Heller** by Carol Heller

*In memory of...*

**Nathan Gainsboro** by Carol Heller

### CANTOR'S DISCRETIONARY FUND

*In honor of...*

**Stuart and Francesca Sweet's** birthdays by Maxine Becker

On occasions of joy or sorrow  
a contribution to one of our temple  
funds is always appropriate.

# CONGREGATION EMANU EL

## SCRIP ORDER FORM

(Most popular retailers are listed below – BUT there are many more available!)

Go to: [www.shopwithscrip.com](http://www.shopwithscrip.com) for a complete list of all available Scrip retailers

RETAILER - % to congregation		VALUE	NO.	\$ Amount
Albertson's	4%	\$25		
Albertson's	4%	\$100		
Amazon	3%	\$25		
Applebee's	8%	\$25		
Arco	1.5%	\$50		
Barnes & Noble	9%	\$10		
Barnes & Noble	9%	\$25		
Bed Bath & Beyond	7%	\$25		
Burger King	4%	\$10		
Carl's Jr.	5%	\$10		
Chevron	1.5%	\$50		
Chili's/Mac Grill	11%	\$25		
Chipotle	10%	\$10		
Claim Jumper	9%	\$25		
Coffee Bean & Tea	9%	\$50		
CVS	6%	\$25		
CVS	6%	\$100		
Del Taco	4%	\$10		
El Pollo Loco	6%	\$10		
Home Depot	4%	\$25		
Home Depot	4%	\$100		
HomeGoods	7%	\$25		
I tunes	5%	\$15		
Jack in the Box	4%	\$10		
Kohl's	4%	\$25		
Kohl's	4%	\$100		

RETAILER - % to congregation		VALUE	NO.	\$ Amount
Krikorian	6%	\$8.00		
Lowe's	4%	\$25		
Lowe's	4%	\$100		
Mimi's	8%	\$25		
Olive Garden	9%	\$25		
Panera	9%	\$10		
Panera	9%	\$25		
Paws	10%	\$50		
Red Robin	9%	\$25		
Shell	2.5%	\$50		
Smart & Final	3%	\$25		
Smart & Final	3%	\$50		
Starbucks	7%	\$10		
Starbucks	7%	\$25		
Stater's	6%	\$25		
Stater's	6%	\$50		
Stater's	6%	\$100		
Stater's	6%	\$250		
Subway	6%	\$10		
Target	2.5%	\$100		
Target	2.5%	\$25		
Von's	4%	\$25		
Von's	4%	\$100		
Wal-Mart/Sam's	2.5%	\$25		
Wal-Mart/Sam's	2.5%	\$100		
Wendy's	4%	\$10		

ADDED RETAILER	VALUE	NO.	\$ Amount

ADDED RETAILER	VALUE	NO.	\$ Amount

NAME	PAID	CHECK NO.	CASH	ORDER TOTAL
ORDER FILLED BY	ORDER RECEIVED BY			DATE DELIVERED

**Make checks payable to: Congregation Emanu El**

Scrip is available in the Congregation Emanu El office during normal office hours

E-mail us at [scrip@emanuelsb.org](mailto:scrip@emanuelsb.org) to order or get more information about the scrip program

**We will gladly order scrip for you!**

*If needed, we can arrange delivery, too!*



1495 Ford Street - Redlands CA 92373

(909)307-0400

www.emanuelsb.org email:cee@emanuelsb.org

**JAY SHERWOOD - RABBI - (909) 307-0400 ext 102 - rabbijaysherwood@emanuelsb.org**

**JENNIFER BERN-VOGEL - CANTOR - (909) 307-0400 ext 103 - cantorjenbv@gmail.com**

**HILLEL COHN - RABBI EMERITUS - rabbihcohn1@cs.com**

**JUDY FILSINGER - ADMINISTRATOR - (909) 307-0400 ext 104 - templeadmin@emanuelsb.org**

**JERRY RIPLEY - ORGANIST/CHOIR DIRECTOR**

**JESSICA ACEVES - YOUTH GROUP ADVISOR**

***EXECUTIVE COMMITTEE***

**Craig Beasley - President • Cheryl Sukenik - 1st Vice President • Greg Weissman - 2nd Vice President**

**Rachael Raynes - Secretary • Stuart Sweet - Treasurer • Steven Becker - Financial Secretary**

**Michael Kress - Member-at-Large • Marvin Reiter - Member-at-Large**

**Paul Zipperstein - Immediate Past President • Leslie Soltz - Sisterhood Representative**

***DIRECTORS***

**Gloria Cutler • Debra Holder • Howard Kaufman • Paula Kaye • Jamie Kogler • Melissa Ladenson •**

**Karen Levine • Cherrie Lubey • Susan Shimoff • Diane Stone • Dr. Mara Winick**

**Francesca Sweet - President, Sisterhood**

**OFFICE HOURS - Monday-Thursday 9:00AM to 5:00 PM; Friday 9:00 AM-4:00 PM**

**THE BULLETIN - CONGREGATION EMANU EL (USPS901-820)**

**Published monthly by Congregation Emanu El, 1495 Ford Street, Redlands CA 92373.**

**Periodical postage paid at San Bernardino CA.**

**POSTMASTER: Send address changes to Congregation Emanu El, 1495 Ford Street, Redlands CA 92373**