

What's Happening at Congregation Emanu El?

Purim Carnival Fun



Purim Dinner



See More Purim Celebration Pictures Inside

SHABBAT CELEBRATIONS



SHABBAT ALIVE / SHABBAT PARAH

Friday - April 1, 2016 - Led by Rabbi Sherwood

Catered Dinner at 6:00 pm / "Shabbat Alive" Service at 7:00 pm

Oneg Shabbat following the service hosted by Elizabeth & Joel Feinstein

Saturday - April 2, 2016 - Led by Rabbi Sherwood

Torah Study - 9:15 to 9:45 am - Shabbat Morning Service - 10:00 am

Parashat Shmini - פרשת שמני

Leviticus 9:1-11:47, Number 9:1-22 - Haftarah - Ezekiel 36:16-36:38

Kiddush Following the Service



TOT SHABBAT / 60-MINUTE SHABBAT / SHABBAT HACHODESH

Friday - April 8, 2016 - Led by Rabbi Jay Sherwood & Cantor Jennifer Bern-Vogel

Tot Shabbat 6:00pm - 6:30pm

"60-Minute Shabbat" Service at 7:00 pm

Oneg Shabbat following the service hosted by Terrill Levinson-Wickham

Saturday - April 9, 2016 - Led by Rabbi Jay Sherwood & Cantor Jennifer Bern-Vogel

Torah Study - 9:15 to 9:45 am - Shabbat Morning Service - 10:00 am

Parashat Tazria - פרשת תזריע

Leviticus 12:1-13:59, Numbers 28:9-15, Exodus 12:1-20 - Haftarah - Ezekiel 45:16-46:18

Kiddush Following the Service



CHOIR SHABBAT / SHABBAT HAGADOL

Friday - April 15, 2016 - Led by Rabbi Jay Sherwood & Cantor Jennifer Bern-Vogel

Kabbalat Shabbat with the Congregation Emanu El Choir at 7:00pm

Oneg Shabbat following the service

Saturday - April 16, 2016 - Led by Rabbi Jay Sherwood & Cantor Jennifer Bern-Vogel

Torah Study - 9:15 to 9:45 am - Shabbat Morning Service - 10:00 am

Parashat Metzora - פרשת מצרע

Leviticus 14:1-15:33 - Haftarah - Malachi 3:4-3:24

Kiddush Following the Service



KABBALAT SHABBAT / PESACH DAY I

Friday - April 22, 2016

No Kabbalat Shabbat service

Please enjoy First Seder with your family & friends

Saturday - April 23, 2016 - Led by Rabbi Jay Sherwood

No Torah Study - Shabbat Morning Service - 10:00 am

Pesach Day I (Shabbat) - (בשבת) פסח יום א' - Exodus 12:21-12:51, Numbers 28:16-28:25

- Haftarah - Joshua 5:2-6:1

Kiddush Following the Service



ASK THE RABBI SHABBAT / MATZAH CHALLENGE /

MARRIAGE RECONSECRATION / PESACH DAY VIII

Friday - April 29, 2016 - Led by Rabbi Jay Sherwood & Cantor Jennifer Bern-Vogel

Kabbalat Shabbat at 7:00pm

Oneg Shabbat following the service

Saturday - April 30, 2016 - Led by Rabbi Jay Sherwood & Cantor Jennifer Bern-Vogel

Torah Study - 9:15 to 9:45 am - Shabbat Morning Service - 10:00 am

Pesach Day VIII (Shabbat) - (בשבת) פסח יום ח' - Deuteronomy 14:22-16:17, Numbers 28:19-28:25

- Haftarah - Isaiah 10:32-12:6

Kiddush Following the Service

Rabbinic Reflection



With Purim just behind us and Pesach just ahead, we are in the season of redemption. Yes, two months in a row we celebrate redemption, despite the fact that these two stories of freedom could not be more different. Purim is the story of the Jewish people coming to their own rescue, while Pesach is the story of God coming to the rescue of the Jewish people. The Book of Esther contains no mention of God, and our tradition teaches that God's presence is hidden in the story. In contrast, God's presence is central to the story of our deliverance from Egypt that we read in the Book of Exodus.

Even though this difference exists, we still connect these two holidays. In fact, the Talmud recommends that we do so. The Babylonian Talmud teaches that Rabban Shimon ben Gamliel said, "it is preferable to juxtapose [one] redemption to [the other] redemption" (*Megillah 6b*). In other words, the two holidays should be celebrated side by side. Even in ancient times, the connection between Purim and Pesach was clear. In order to truly be redeemed, we must do so both through our own initiative (Purim) and through our connection to the Divine (Pesach). Whether we need rescue from narrow places (represented by Egypt, whose name in Hebrew means "narrow places") or from evil (personified in Haman), we must rely both on ourselves as well as on the Holy One. This is the lesson of these biblically based holidays. Perhaps the former Chief Rabbi of England, Rabbi Lord Jonathan Sacks, put it best when he wrote that our Jewish biblical story "is a movement from acts done by God for the sake of human beings to acts done by human beings for the sake of God" (*To Heal A Fractured World*, pg. 157).

Join us as we celebrate our continuing story of redemption. We have a long list of learning opportunities and holiday celebrations this month. From the Chocolate Seder to the Eat This, Not That class, take some time to learn more about Pesach traditions. From the Community Seder to the Women's Seder, join in the celebration of this festive time of year. I look forward to learning and celebrating with you!

Kol tuv,

Rabbi Jay Sherwood

Cantorial Comments



The Month of Nisan and 'Tal' Prayer for Dew

Happy New Year! What? Again?!! Yes. With the month of Nisan, according to our biblical texts, we are in the first month of the calendar year – springtime – a time of new beginnings, sprouting buds, fragrant smells of flowers and trees in bloom, the celebration of our liberation from bondage. With the repetition of the story of our freedom from slavery in the *Haggadah* – physical slavery in particular, we are reminded each year, of the importance of freeing ourselves from the shackles of unhealthy habits and personal fears and obstacles. We are also reminded that while WE are always struggling with a myriad forms of personal and internal bondage – there are still far too many people in our world who are actually slaves in the literal sense of the word. May our Passover observance this year, be an opportunity to share communal friendship and warmth as well as heighten awareness of those in need, because while helping others, we invariably help ourselves to become stronger and fuller human beings.

And another small reminder, that on Passover, we stop reciting the prayer for rain [in the Amidah]. Rains that fall at the end of Nissan are considered to be a bad sign for the world, the time for the grain harvest has begun and rain will cause the sheaves of grain lying in the field to rot, instead, we pray for dew to fall and moisten the crops without harming drying grain. The first day of Passover was destined from Creation as the time for dew to fall, so from the first day of Passover until Shemini Atzeret, we substitute the passage *Morid haTal*, "*Who brings down dew*", for *Mashiv haRuach u'Morid haGeshem*, "*Who causes the wind to blow and the rain to fall*", in the second paragraph of the Amidah.

Here are some excerpts from the Prayer for Dew:

"Give us dew to favor Your land, grant us a blessing of Your joy. Make us strong with plentiful grain and wine. Restore Jerusalem, Your delight, as flowers are renewed by dew.

Let this be a good year for dew, crowned with proud and beautiful fruit. May the city of Jerusalem, once empty, be turned into a crown that sparkles like the dew.

For blessing and not for curse. Amen.

For life and not for death. Amen.

For plenty and not for lack. Amen.

My family joins me in wishing you a Chag Pesach Sameach – Happy Passover!

B'simcha,

Cantor Jennifer Bern-Vogel

Presidential Perspectives



With Purim in our rear view mirror, it is time for us to become a bit more serious (dare I say, “Sober up”) and focus on the many activities upcoming in the month of April. April 5 brings the annual Norman F. Feldheym Memorial Lecture. Join us as

Dr. Tamar Frankiel speaks on her book, “Entering the Temple of Dreams.” The lecture is open to the public and admission is free. April 16 is the Sisterhood Women’s Retreat. Beginning at 10:00 AM there will be morning services, lunch, an afternoon presentation and a concluding Havdalah service. Saturday, April 23, is our Community Seder, sponsored by Sisterhood. Rabbi Sherwood will lead us in song and learning and provide a few surprises as usual. Please contact the temple office to register for either event.

Thursday, April 21, at the monthly Board of Director’s meeting, we will introduce a resolution to make the funds in the Harris Trust available for use in servicing the mortgage on our building. Considerable research has been done on this topic including obtaining external legal opinions on the action. The use of this money to assist with mortgage reduction is entirely consistent with the wishes of the Harris family. Temple members are always welcome at board meetings, so if you have any comments on this subject please come to the meeting and make them known. You may also send them to me at craig@beasleys.net for inclusion in the meeting.

May is Mental Health Awareness Month and two of our congregants Nancy Sidhu and Heidi Nimmo are Co-chairs of Mental Health Awareness in Action. They are involved in an ongoing effort to educate our congregation and the wider community about the problem that is mental illness. I suspect that we all know someone who is dealing with a mental health issue, so pervasive is it in our communities. As one who had a close relative afflicted with debilitating Obsessive Compulsive Disorder, I can attest to the difficulties and stigmatization they experience in the work place and their day to day existence. By educating ourselves about mental health issues, I believe we can make a real difference in the lives of those close to us and in our communities. So, on behalf of the congregation, its leadership and myself, I would like to thank Nancy and Heidi for their persistent efforts in this cause. Todah Rabah.

L’Hitraot,

Craig Beasley

Sisterhood Speaks



On behalf of our Sisterhood Board, I would like to begin by wishing all a festive and happy Purim as well as a reflective and happy Passover. Many thanks to Leslie Soltz as well as Julie Strain for coordinating and organizing our Shalach Manot fundraiser including Hamantaschen baking, letters, bags and even hosting our local Hillel group from University of Redlands. In addition, appreciation to Karyn Lehmann and Reva Bloom for ensuring that our “Trash or Treasure” brunch on March 13 was such a lovely event. One of just many highlights was honoring our newest Octogenarians: Marjorie Brown, Margy Spears, Jay Smith, Ethel McAfee and Walda Gorian. Thank you so much dear ladies for your years of dedication, efforts and support of Sisterhood and congregation.

On April 16 Sisterhood will be hosting an all day Women’s Retreat that will include morning services, lunch, presentations by Marylou Falstreau and Dr. Tracy Covington entitled “Coloring Outside the Lines” and then ending with Havdalah. Our Community Seder will be on Saturday, April 23 and our Women’s Seder will be Wednesday, April 27. Please see bulletin for additional details and information- and don’t forget to RSVP as soon as possible to reserve your space. If you are interested in helping with helping with either Seder please contact Renee Kress.

Our next Sisterhood board meeting is April 3 at 10:00 a.m. at the Temple.

Best,

Francesca Sweet

Temple Board of Directors Meeting

Thursday - April 21, 2016 - 7:00pm

Members of the congregation are always welcome to attend the meetings of the Board and to participate in its deliberations

Treasurer's Report



Dear friends,

This has been the first in a series of challenging months for Congregation Emanu El, and it's looking like a good thing that we saved our nickels and dimes. Income for the month was only \$17,500 and with our mortgage payment, expenses were close to \$40,000. That's a pretty scary

deficit when you look at it, but we covered it because we've been smart this year.

The big challenge was, of course, pulling in the income that we need. Mortgage Retirement Fund income was only about 11% of what we were hoping, and there was no major fundraiser this past month. In fact, there's no major fundraiser booked for the rest of the year. As we look forward to the spring and early summer, we're going to do our best to manage expenses so we don't have to dip into savings.

It's getting more and more obvious that we've hit a bit of a turning point, and the days when we could count on high-dollar donors and five-digit fundraising drives are behind us. That makes things a little more challenging but far from impossible. As fiscal 2016 turns into fiscal 2017, we'll be doing more with less, just as I expected. We've had a fabulous response from volunteers. Our plan to cut printing expenses has reduced the need for expensive labor to manage mailings. Thank you to all those who agreed to go all-electronic instead of relying on expensive paper mailings.

It will be a challenge, but we're looking everywhere we can to find even more cuts. We want to be smart and manage costs without hurting the character of Congregation Emanu El. In order to do that, we'll need even more volunteer participation. Whether it's a few hours in the office or a Sunday morning pulling weeds, it's always appreciated... and there are a lot of openings that we need volunteers to fill. If you're already volunteering, THANK YOU THANK YOU THANK YOU! It's because of people like you that we're thriving even despite our current cash crisis.

As we move forward, your leaders will be depending on YOU to tell us what you want to see and do at Congregation Emanu El. This year we have had more programs than any time in recent years and they have been very popular. Our new members have told us that they enjoy Rabbi Sherwood's approach and we're committed to making sure that our finances don't hold us back from thriving. That's why it's more important than ever that if you have an idea, if you like something or don't like it, please tell us. Your leaders are here to represent YOU. We want to do the best job we can.

I look forward to seeing you all at our next congregational meeting where I'll be outlining the steps we'll take to stay solvent through 2017.

Peace,

Stuart Sweet



Parents,

as you begin to think about summer plans for your children, please consider sending them to a Jewish camp. Study after study has shown that one of the most important experiences in establishing Jewish identity is going to a Jewish Summer Camp. Campers experience Judaism twenty-four/seven - a difficult proposition in the Inland Empire. The memories and experiences our youngsters come home with are indescribable. Campers return from a Jewish summer camp with stories of how they spent Shabbat, activities that challenged them both intellectually, spiritually and physically; and, most importantly, they will forge new, life-long friendships.

Later this month, we will announce dates that Camp Mountain Chai and URJ Camp Newman will visit us for presentations about summer camp. To qualify for a scholarship, you may attend one of these camps, or one of the other area Jewish camps, including: Camp Hess Kramer, Gindling Hilltop Camp, Camp JCA Shalom, Camp Ramah, Camp Alonim - or any other Jewish residential camp. The Sisterhood of Congregation Emanu El oversees the **Rabbi Hillel and Rita Cohn Campership Fund**.

Funds have been set aside to assist Congregation Emanu El families with sending their children to camp. Campership Applications are available at the Temple Office or you may contact Leone Hyman. Camperships are also available from the **One Happy Camper Foundation** through the various camp offices. Please contact Rabbi Sherwood for information about this campership or any other information about Jewish Summer Camps.

Shabbat Alive Dinner & Service Friday, April 1, 2016



Shabbat Alive is a community dinner followed by a participatory, musical Shabbat service in the round.

Dinner is \$10/person, but children under 10 years old pay their age. The cost at the door is \$13.00 if food is available. Please make your payment at the temple office. This month's menu: **Mediterranean (falafel, chicken kabobs, hummus, etc)**

Dinner begins at 6:00pm
Shabbat service begins at 7:00pm

RSVP at

<https://www.eventbrite.com/e/shabbat-alive-april-2016-tickets-24179528621>

JOIN US FOR



On the 2nd Friday of each month
join us for an Erev Shabbat experience
for children in Pre-K through 1st grade
(but all are welcome to join in!)

Join Rabbi Jay Sherwood for
a 30-minute service
with music, stories and a Hershey's kiss
to welcome the sweet Shabbat

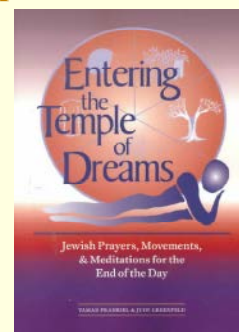
Upcoming Dates:

April 8 - 6:00pm-6:30pm

May 13 - 6:00pm-6:30pm

30th Annual Rabbi Norman F. Feldheim Memorial Lecture Tuesday - April 5, 2016 7:00 pm at Congregation Emanu El

Dr. Tamar Frankiel
will present a lecture on
"Entering the Temple of Dreams"



Dr. Tamar Frankiel is the Provost of the Academy for Jewish Religion, California, where she has been a member of the faculty since 2002. Dr. Frankiel served as the president of the Academy from Jan. 2013 - Dec. 2015, making her the first Orthodox woman to head a rabbinical school in the United States.

Dr. Frankiel earned her PhD in History of Religions the University of Chicago. She has taught at Claremont School of Theology, Stanford, Princeton, UC Berkeley and UC Riverside. She is the author of numerous books, including *The Gift of Kabbalah*; *The Voice of Sarah*; *California's Spiritual Frontiers*; and *Entering the Temple of Dreams*.

Rabbi Norman F. Feldheim was the leader of our congregation from 1937-1971 and our Rabbi Emeritus from 1971 until his death in 1985, when the Rabbi Norman F. Feldheim Memorial Lecture Fund was established in order to bring programs to our congregation, annually at the time of his Yahrzeit, on subjects that were especially dear to Rabbi Feldheim.

This lecture is open to the public.
Admission is free.

You are invited to join in a festive celebration of Passover at the

2nd Night of Passover Community Seder

Saturday - April 23, 2016 - 6:00 pm

hosted by

Sisterhood of Congregation Emanu El



Rabbi Jay Sherwood will lead the Seder that will include the traditional elements along with sing-a-long music, interesting learning, with some fun surprises as well.

Enjoy a homemade Seder meal hosted by members of our Sisterhood, complete with all of the traditional foods (*including vegetarian main-course option*).

Wine is provided.

Members pricing:

Adults - \$40.00 - Children 4-12 - \$12.00

Children under 4 - Free

Non-Member pricing:

Adults - \$50.00 - Children 4-12 - \$20.00

Children under 4 - Free

Make reservations by no later than
April 13, 2016 by calling the office or at:

<https://www.eventbrite.com/e/2nd-night-of-passover-community-seder-tickets-22457700587>

Those wishing to be seated together (tables accommodate 8 people)
are requested to make their reservations together.



***Do Not Miss Any of Our Passover Events
at Congregation Emanu El***

Chocolate Seder

*Saturday, April 9, 2016
7:00pm - RSVP Required*

Eat This, Not That - Pesach Edition

*Tuesday, April 12, 2016
7:00pm - 8:30pm - Adult Education Class*

SJL Model Seder

*Sunday, April 17, 2016
11:00am - for all students and their parents*

No Kabblat Shabbat Service

(Enjoy Your 1st Night Seder)
Friday, April 22, 2016

Shabbat/Pesach Morning Service

*Saturday, April 23, 2016
No Torah Study - Service Begins at 10:00am*

2nd Night Community Seder

*Hosted by Sisterhood of Congregation Emanu El
Saturday, April 23, 2016
6:00pm - RSVP Required*

Women's Seder

*w/ Sisterhood and Cantor Jennifer Bern-Vogel
Wednesday, April 27, 2016
6:30pm - RSVP Required*

Erev Yom Tov (Pesach) Service

*Thursday, April 28, 2016
Brief Service Begins at 7:00pm*

Last Day of Pesach Concluding Service w/ Yizkor

*Friday, April 29, 2016
Service Begins at 10:00am*

Matzah Challenge / Marriage Reconsecration / Ask the Rabbi

*Friday, April 29, 2016
Service Begins at 7:00pm
Oneg Mitzah Dessert Competition - Quinquennial Anniversaries*

Get your Chametz On!

*Monday, May 2, 2016
Fundraiser Dinner - Old Spaghetti Factory*

Chocolate Seder
Saturday, April 9th
7:00pm - 8:30pm



Learning has never been so sweet!!

Join in the fun as Rabbi Jay Sherwood leads us through the 15 steps of the Passover Seder in the sweetest way possible - with Chocolate!

Four cups of wine? NO!
Four cups of chocolate milk!!
We think you get the idea!!

\$5.00/members --- \$10/non-members

RSVP no later than April 6, 2016

by calling the Temple office at 909-307-0400
 or online at

<https://www.eventbrite.com/e/chocolate-seder-tickets-24183167505>

Eat This, Not That - Pesach Edition
Tuesday, April 12th
7:00pm - 8:30pm



A new Adult Education Class
w/ Rabbi Jay Sherwood

Passover is coming, and along with it comes a long list of rules and regulations about what we can and cannot eat.

Matzah? Chametz? Kitniyot? Gebrochts?
Kosher L'Pesach? Shmurah Matzah?

What do those words mean and why should I care? Get all of our Passover food questions answered in one night!

Matzah Challenge Shabbat
Friday, April 29th



On an Erev Shabbat in the middle of Pesach, join us for Matzah Challenge Shabbat. Matzah Challenge is a dessert making competition. Bring a matzah based dessert (homemade only and kosher for Passover ingredients only!) to the Oneg Shabbat. After viewing and tasting we will vote for Best Tasting and the Best Presentation.

Certificates will be awarded and winners will be featured in the Emanu El-electronic Newsletter

Two ways to participate:
 Bakers/chefs and tasters are needed!!

Marriage Reconsecrations
Friday, April 29th

We will honor couples who are celebrating quinquennial wedding anniversaries during 2016 (5th, 10th, 15th, 20th, 25th, 30th, 35th, 40th, 45th, 50th, 55th, 60th, etc.). All of the couples will stand beneath the chuppah once again to reconsecrate their wedding vows.



We look forward to honoring them as they repeat some of the acts of the traditional Jewish marriage ceremony. Each couple will receive a beautiful certificate marking the occasion. Come wish the "brides" and "grooms" well as they celebrate their milestone anniversaries.



Mental Health Awareness

**Let's do something
caring for Mental Health
Awareness Month!**

May 2016.

May is mental health awareness month. Many activities are planned at Congregation Emanu El. Watch for a lot of lime green color in May. Lime green awareness ribbons draw attention to the need for all of us to speak openly about mental illness.

Together we can end the stigma of mental illness.

Nancy Sidhu & Heidi Nimmo

Co-chairs Mental Health Awareness in Action

ANNUAL CONGREGATIONAL MEETING

**The Annual Meeting of the Membership
of Congregation Emanu El
Thursday - May 19, 2016 at 7:00 pm
in the Social Hall**

The Annual Meeting agenda includes the following:

- Election of officers and directors
- President's Report
- Rabbi's Report
- Presentation of the President's Award
- Overview of the Budget & Financial Report
- "Good and Welfare"
- a time for congregants to voice their concerns and propose changes

The Annual Meeting will be preceded by a Bar-B-Que dinner on the patio hosted by the current officers and Board of Directors (no charge).

Welcome New Members

ברוכים הבאים

We are delighted to welcome the following who have recently joined our congregation family:

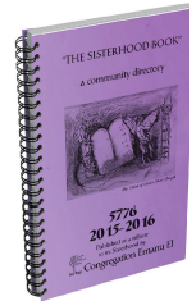
**Dr. Emily & Justin Swant
and their children Zoe and Noah**
*Emily is the daughter of Ellen Weiss and has
recently returned to Redlands*

Deborah Salow & Kevin Foist

IT'S COMING SOON

The New "Sisterhood Book"
**will be available at the annual meeting
on May 19th**

*Plan to attend the
annual meeting and
get your copy of the
new "Sisterhood
Book" temple
directory*



Thank You

תודה רבה

Thank you to those who worked to make our Purim Carnival & Dinner so wonderful, including:

**Jessica Aceves
Cheryl Bardowell
Shelley Bodner
Judy Filsinger
Zee & Ernie Knapp
The Lehmann Family
The Sherwood Family
Phyllis Sweet
All of the Hamantaschen Bakers
Symphonie Jeunesse
E3 - Valverde School of Performing Arts**

...and all those who helped in ways big & small

Seniors For Seniors*

*For seniors of the greater San Bernardino-Redlands- Banning-Mountains
and surrounding Jewish communities!!!*

Join us for Lunch AND another Informative Program

Wednesday-April 13th -11:45 am

at

Congregation Emanu El - 1495 Ford Street - Redlands



**DR.
LAWRENCE
RAPHAEL**

will speak on

**"HEART HEALTH
FOR SENIORS"**

**Dr. Raphael, an eminent cardiologist, will answer your
questions about heart health!!!**

Lunch by



When you make your reservation please specify your choice of the following:

- ☐ Thai Chicken Salad ☐ Chicken Caesar Salad ☐ Greek Salad (vegetarian)

Lunch cost: \$ 10.00 per person

**Reservations must be made by calling or emailing the temple
(909)307-0400 - email: cee@emanuelsb.org**

**Reservation Deadline: Monday - April 13th
(let us know if you require transportation)**

*** = "seniors": anyone who considers him/herself a 'senior' - retired, 60+**

Join us for a
Sisterhood Women's Retreat
 "Coloring Outside The Lines"

**Join in a day of morning services,
 lunch, an engaging presentation and
 finish the day with Havdalah!**

April 16, 2016

starting at 10:00am

\$18 covers lunch (bring your own snacks)

*Reserve now at the temple office
 or call (909) 307-0400*

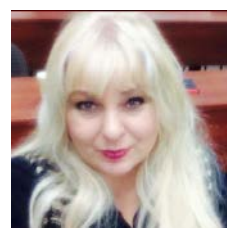


Marylou Falstreau is an artist and workshop leader, as well as, the creator of the "Women and the Hourglass" series. There are now 49 images available in Cards, Prints, Affirmation Card Decks, Magnets and most currently, a Coloring Book.



Marylou Falstreau

Dr. Covington began her career as an Assistant Professor and Staff Psychologist at Loma Linda University Medical Center (LLUMC), Department of Anesthesia after completing her doctoral degree. During her tenure at LLUMC, she began integrating psychological concepts with a diversity of chronic pain conditions and life threatening illnesses. This included the creation of Transitions, a clinical support group specific to young adults challenged by severe health conditions such as cancer.



Dr. Tracy J. Covington

DURING THE WEEK OF PURIM WE HAD AN AMAZING BEATLES SHABBAT

FEATURING

THE SHABBEATLES

CRAIG "GEORGE HARRISON" BEASLEY

MURRAY "PAUL MCCARTNEY" COHEN

ALAN "RINGO STARR" BENSON

RABBI JAY "JOHN LENNON" SHERWOOD



MORE PICTURES OF PURIM FUN



PASSOVER SALE AT THE SISTERHOOD GIFT SHOP

Buy your Passover gifts at 20% off!!

Books 40% off!!

CDs 45% off!!



Sunday, April 17

10:30am - 1:00pm



GET YOUR CHAMETZ ON AT



MONDAY, MAY 2, 2106

You will have your fill after eating matzah for a week
so join us as you **GET YOUR CHAMETZ ON** and eat some pasta and bread
with your friends & family from Congregation Emanu El
(Congregation Emanu El earns a 15% donation for every dollar you spend)

More details in your e-mail inbox soon!!

Four More Questions

past | present | future

What is your *chametz*?

As we prepare for Passover, we get rid of anything that contains *chametz*/any food product made from wheat, barley, rye, oats, spelt, or their derivatives, which has leavened (risen) - and traditionally, we abstain from *chametz* throughout Passover. Actual *chametz* is relatively easy to identify. **What *chametz* in your spiritual life are you going to clean out this year?**

What enslaves you?

Each year at the Passover Seder we read that the Israelites were slaves in Egypt. One of the central purposes of the Seder is to remember what it means to be enslaved. **What enslaves you today?**

What are our plagues?

We read in the *Haggadah* that God sent 10 plagues upon Pharaoh and the Egyptians to convince them to let the Israelites go. **What are our contemporary Plagues that are reminding us to cherish our freedom and make sure more people are free?**

What is your *matzah*?

The Israelites had to pack to leave Egypt at a moments notice without time to bake bread and let it rise. **What is most essential to you today - what would you be taking with you?**

Why? BONUS

In this day and age, living in a world of seemingly endless choices, **what are your reasons for celebrating Passover in a world of choice?**



ReformJudaism.org
Jewish Life in Your Life

CONGREGATION EMANU EL

SCRIP ORDER FORM

(Most popular retailers are listed below – BUT there are many more available!)

Go to: www.shopwithscrip.com for a complete list of all available Scrip retailers

RETAILER - % to congregation		VALUE	NO.	\$ Amount
Albertson's	4%	\$25		
Albertson's	4%	\$100		
Amazon	3%	\$25		
Applebee's	8%	\$25		
Arco	1.5%	\$50		
Barnes & Noble	9%	\$10		
Barnes & Noble	9%	\$25		
Bed Bath & Beyond	7%	\$25		
Burger King	4%	\$10		
Carl's Jr.	5%	\$10		
Chevron	1.5%	\$50		
Chili's/Mac Grill	11%	\$25		
Chipotle	10%	\$10		
Claim Jumper	9%	\$25		
Coffee Bean & Tea	9%	\$50		
CVS	6%	\$25		
CVS	6%	\$100		
Del Taco	4%	\$10		
El Pollo Loco	6%	\$10		
Home Depot	4%	\$25		
Home Depot	4%	\$100		
HomeGoods	7%	\$25		
I tunes	5%	\$15		
Jack in the Box	4%	\$10		
Kohl's	4%	\$25		
Kohl's	4%	\$100		

RETAILER - % to congregation		VALUE	NO.	\$ Amount
Krikorian	6%	\$8.00		
Lowe's	4%	\$25		
Lowe's	4%	\$100		
Mimi's	8%	\$25		
Olive Garden	9%	\$25		
Panera	9%	\$10		
Panera	9%	\$25		
Paws	10%	\$50		
Red Robin	9%	\$25		
Shell	2.5%	\$50		
Smart & Final	3%	\$25		
Smart & Final	3%	\$50		
Starbucks	7%	\$10		
Starbucks	7%	\$25		
Stater's	6%	\$25		
Stater's	6%	\$50		
Stater's	6%	\$100		
Stater's	6%	\$250		
Subway	6%	\$10		
Target	2.5%	\$100		
Target	2.5%	\$25		
Von's	4%	\$25		
Von's	4%	\$100		
Wal-Mart/Sam's	2.5%	\$25		
Wal-Mart/Sam's	2.5%	\$100		
Wendy's	4%	\$10		

ADDED RETAILER	VALUE	NO.	\$ Amount

ADDED RETAILER	VALUE	NO.	\$ Amount

NAME	PAID	CHECK NO.	CASH	ORDER TOTAL
ORDER FILLED BY	ORDER RECEIVED BY			DATE DELIVERED

Make checks payable to: Congregation Emanu El

Scrip is available in the Congregation Emanu El office during normal office hours

E-mail us at scrip@emanuelsb.org to order or get more information about the scrip program

We will gladly order scrip for you!

If needed, we can arrange delivery, too!

Happy Birthday!!!

יום הולדת שמח

We rejoice with those whose birthdays occur in April and wish them a *Mazal Tov*:

2-Apr	Joel Feinstein	19-Apr	Jon Fenster
2-Apr	Olivia Stein (2 years old)	20-Apr	Alvin Ellman
2-Apr	Ellen Weiss	20-Apr	Shaina Knox
4-Apr	Sol Buchband	21-Apr	Val Ordaz
4-Apr	Asher Sheppard	23-Apr	Stacy Knox
6-Apr	Joey Sousa (13 years old)	23-Apr	Micah Knox (18 years old)
6-Apr	Michael Zipperstein	23-Apr	Ethan Knox (18 years old)
7-Apr	Diane Feldman	23-Apr	Mark Strain
8-Apr	Mildred Hodes	23-Apr	Robin Uffer
8-Apr	Richard Simon	24-Apr	Caroldyne Swedlove
8-Apr	Gregory Spears	24-Apr	Hunter Verschell (13 years old)
9-Apr	Ruben Blumen	24-Apr	Gregory Yaroslow
9-Apr	Curtis Eirew	25-Apr	Alexandra Blumen
9-Apr	Elayne Raynes	26-Apr	Marilyn O'Dell
12-Apr	Samuel Shiell	26-Apr	Lily Sherwood
17-Apr	Martha Berman	28-Apr	Morrissa Cardoza
17-Apr	Gail Nachman	29-Apr	Sylvia Joseph
17-Apr	Jeremy Sherwood		

Happy Anniversary

מזל טוב!

We extend a hearty Mazal Tov to the following whose wedding anniversaries occur in the month of April:

April 4 - Mildred & Irving Hiller

April 10 - Debra & Philip Holder

April 11 - Stacy & James Knox

SCRIP NEWS!



New retailers available now:

Harkins Theater - Classic Tickets - \$7.50

(good for all shows before 6:00 p.m., special engagements excluded after 6:00 pm, 3D extra charge)

Harkins Theater - Ultimate Tickets - \$8.50

(good for all shows anytime; 3D extra charge)

Nordstrom & Nordstrom Rack

Yahrzeits

The following Yahrzeits will be observed during the month of April: Those with a (★) are inscribed on the Wall of Perpetual Memorial:

April 1-2	April 8-9	April 15-16	April 22-23	April 29-30
★ Shirley Alan ★ Court Darrow ★ Morris Davis ★ Esther Eisenberg ★ Morris Ernstein ... Daniel Freeman ★ Anna Fremland ★ Joseph Friedland ★ Janet Frierman ★ Shirley Gold Laura Handleman ★ Josephine Helman Shirley Kaufman Marian Konowitch Marilyn Leidner Ernestine Low ★ Rae Magid ★ Rose Newman ★ Rose Nourok ★ Lee Roshwald Anselmo San Gabino Donald Stuckey Lester Weinstein Ben Weissman ★ Aron Wixen	Elsie Baskin Eli Bender ★ Mark Birnkrant ★ Harold Blizin Lottie Buncher ★ Fred Buse ★ Bertha Chudacoff ★ Max Cohn ★ Emma Cohn Anne Cushing ★ Oscar Eckstein ★ Doris Elitzak ★ Nic Fish ★ Rose Fradkin ★ Jerry Granowitz ★ Louis Greenberg ★ Sadie Helman ★ Joseph Jarcho Ben Joseph ★ Sophie Joseph James Knox ★ Sophia Laskin ★ Joseph Litsky ★ Herman Miller Abe Minkoff ★ Mary Newman ★ Mildred Newman ★ Helen Rosenberg ★ Louis Rosenberg ★ Boris Rubinstein ★ Sam Rubinstein Ethel Sheppard ★ Bessie Skadron Louis Sokol ★ Jerome Sorkin ★ Minnie Sperber ★ Stephen Stone Samuel Strelzoff ★ Morris Swedlove Richard Trainor Felix Tuchband Anna Wilcox ★ Harry Zaritsky	★ Philip Abrams Jeanette Amdursky ★ Nathan Arbeitsman ★ Morton Aronoff ★ Bernard Berry ★ Manny Berz ★ Harry Cole ★ Fay Davidson Jessie Deutsch Harry Donenfeld Gerd Fassbeck David Gerber Stella Greene ★ Ida Hollander ★ Leonard Harris ★ Myrtle Jacobson Ira Kaner ★ Stella Kelber ★ Harry Kristal ★ Rose Langer ★ Andree Lehmann ★ George Malacoff ★ Eleanor Meisinger ★ Mildred Meyer ★ Mozelle Mitchell ★ Margaret Neisen Gloria Nimmer ★ Patsy Nourok ★ Sam Rabenstock Arthur Robinson ★ Leah Rosen ★ Fannie Rosenbaum ★ Rose Roth Robert Schaffer Jennie Schwartz Irving Stillerman ★ Stanley Wolenski	Meye Bloom ★ Sadie Borsuk ★ Hyme Budd ★ Bertha Buse Alma Charlick Leah Donenfeld ★ Bessie Drumlevitz ★ Morris Ellison Muriel Faber ★ Fritzie Feit ★ Samuel Finkler Harry Forman ★ Martha Frankel Maurice Frisch Beatrice Gibbs ★ Marion Granish Max Greenburg Harold Harris Charles Herman ★ Reba Isenberg Alfred Jugle ★ Rosalia Kaufman ★ Morton Klein ★ Edward Lawrence ★ Merrill Parlas ★ George Peters Greta Pick Jack Rabinowitz ★ Sol Robbins Elizabeth Rosenfeld ★ Michael Schon ★ Ruth Schwartz ★ Zelda Secofsky ★ Sophie Silberman ★ Percy Snyder Earline Stept Harry Teitelbaum Rachel Tucker ★ Saul Weinberg ★ Roberta Weinstein ★ Charles Woldenberg ★ Julius Zelman, M.D.	Evelyn Baker ★ Ida Brill Lottie Buncher ★ Reatha Burnett Chuck Ehrlich ★ Elka Ellison ★ Henry Gainsboro Solomon Gershon ★ William Gilbert Celia Goodz ★ Jack Harrison ★ Ella Hearsh ★ Rachel Hodes Randi Hoffman ★ Leah Jarcho Desi Javor ★ Sol Kantor ★ Florence Kavovit ★ Hilda Kitay Louis Kovitz ★ Leslie Lapides Louis Lelchook Ben Lerner ★ Emanuel Levine ★ Dora Libman ★ William Lubelsky ★ Celia Miller ★ Doris Moss Israel Newman Harold Odoroff Allen Price ★ Reba Rubin Rabbi John Sherwood ★ Barnet Shvemar ★ Jack Skadron Ina Smith Gertrude Solomon ★ Sydney Snyder Louis Stahlberg Kitty Stahlberg Pauline Sussman Irrmy Tilton Fay Tuchband Alfred Weinberg ★ Harry Weintraub

We Gratefully Acknowledge

We gratefully acknowledge these contributions to our various temple funds:

TEMPLE FUND

In observance of the Yahrzeits of...

Marlene Becker Goldblum by Linda and Peter Rhein

Jack Becker by Linda and Peter Rhein

Louis Press by Thelma Press and family

Albert Sanders by Marsha and George Hanover

William Lamb by Michelle Anctil

Norman Haydis by Robert Gross

Ellen Gail Ebert by Emily and Craig Beasley

Spc. Daniel Freeman by Vickie and Steven Becker

Marvin Herschberg by Debbie and Phil Holder and family

Harvey Fannin by Kathleen Trainer

Rosa Newman by Phyllis Newman

Elsie Baskin by Phyllis Newman

In memory of...

Sheldon Swedlove by Ethel McAfee

Sheldon Swedlove by Francine Wixen

Sheldon Swedlove by Anita Mishook

Sheldon Swedlove by Sheri Maltzman

Sheldon Swedlove by Phyllis Newman

Esther Weitzman by Phyllis Newman

Sandra Stoller by Sheri Maltzman

Aron Wixen by Francine Wixen

In honor of...

Sisterhood for Lighting Shabbat Candles by Phyllis Newman

SISTERHOOD PULPIT FLOWER FUND

In observance of the Yahrzeits of...

Harvey Hosmann by Michele and Paul Zipperstein

George Groupp by Shelley and Joseph Bodnar

Lillian Rabenstock by Sunny Rabenstock

Max Kitay by Faye and Robert Baskett

Beverly Steinhorn by Janice and Alvin Ellman

In memory of ...

Max Rubin by Jay Donenfeld

SISTERHOOD KITCHEN FUND

In memory of ...

Allen Howard Schwartz by Tobi Schwartz

SISTERHOOD GENERAL FUND

In honor of ...

Carole Wizer for Mah Jongg Tournament

Leadership by Doris Melnick

Paula Kaye for Mah Jongg Tournament Leadership
by Doris Melnick

CEMETERY FUND

In memory of ...

Sheldon Swedlove by Larry Lerner and Jeff Lerner

RABBI'S DISCRETIONARY FUND

In appreciation of ...

Rabbi Jay Sherwood for naming of granddaughter by Lisa and Kurt Wilkie

Rabbi Jay Sherwood for his teaching by Kathleen Trainer

MORTGAGE RETIREMENT FUND

In memory of ...

Sheldon Swedlove by Joyce and Barry Eskin

Sheldon Swedlove by Michelle Anctil and Judith Smith

For the recovery of ...

Janice Tamkin by Joyce and Barry Eskin

In honor of ...

Burt Orland's 75th Birthday by Heidi Nimmo and Jeffrey Spears

Burt Orland's 75th Birthday Leone and Bradley Hyman

WILLIAM RUSSLER FUND

In memory of ...

Jacqueline Russler by Carla Saiger and Michael Fanelli

SJL SPECIAL PROJECTS

In honor of ...

Leslie and William Soltz's 45th Wedding Anniversary
by Leslie and Charles Levine

On occasions of joy or sorrow
a contribution to one of our temple
funds is always appropriate.

Contribution can be made to the
following funds:

Home of Eternity Cemetery Fund

Temple Fund

Rabbi's Discretionary Fund

Cantor's Discretionary Fund

William Russler Memorial Archives Fund

Mortgage Reduction Fund

Sisterhood Pulpit Flower Fund

Rabbi Hillel & Rita Cohn Campership Fund

Lionel Heller Music Fund

Bernice Berenbaum Kitchen Fund

Morton Aronoff Endowment Fund



1495 Ford Street - Redlands CA 92373

(909)307-0400

www.emanuelsb.org email:cee@emanuelsb.org

JAY SHERWOOD - RABBI - (909) 307-0400 ext 102 - rabbijaysherwood@emanuelsb.org

JENNIFER BERN-VOGEL - CANTOR - (909) 307-0400 ext 103 - cantorjenbv@gmail.com

HILLEL COHN - RABBI EMERITUS - rabbihcohn1@cs.com

JUDY FILSINGER - ADMINISTRATOR - (909) 307-0400 ext 104 - templeadmin@emanuelsb.org

JERRY RIPLEY - ORGANIST/CHOIR DIRECTOR

JESSICA ACEVES - YOUTH GROUP ADVISOR

EXECUTIVE COMMITTEE

Craig Beasley - President • Cheryl Sukenik - 1st Vice President • Greg Weissman - 2nd Vice President

Rachael Raynes - Secretary • Stuart Sweet - Treasurer • Steven Becker - Financial Secretary

Michael Kress - Member-at-Large • Marvin Reiter - Member-at-Large

Paul Zipperstein - Immediate Past President • Leslie Soltz - Sisterhood Representative

DIRECTORS

Gloria Cutler • Debra Holder • Paula Kaye • Jamie Kogler • Melissa Ladenson

Karen Levine • Cherrie Lubey • Marvin Reiter • Susan Shimoff • Diane Stone • Dr. Mara Winick

Francesca Sweet - President, Sisterhood

OFFICE HOURS - Monday-Thursday 9:00AM to 5:00 PM; Friday 9:00 AM-4:00 PM

THE BULLETIN - CONGREGATION EMANU EL (USPS901-820)

Published monthly by Congregation Emanu El, 1495 Ford Street, Redlands CA 92373.

Periodical postage paid at San Bernardino CA.

POSTMASTER: Send address changes to Congregation Emanu El, 1495 Ford Street, Redlands CA 92373